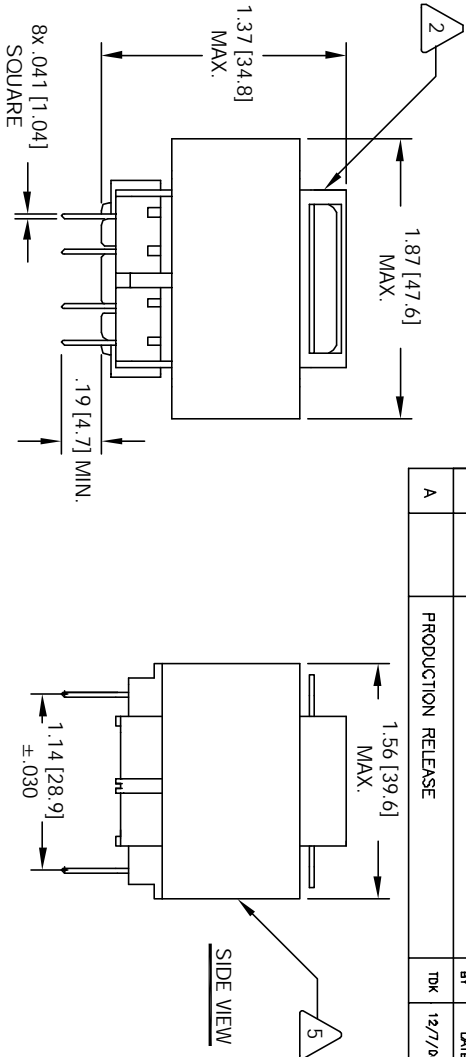
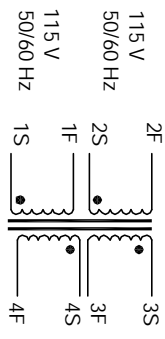


The information contained in this drawing is the sole property of CWSBryantmark. Any reproduction in part or whole without written permission of CWSBryantmark is prohibited.

REVISION HISTORY

REV	ECN	DESCRIPTION	BY	DATE	CHK	DATE
A		PRODUCTION RELEASE	TDK	12/7/04	JLJU	12/7/04



5 WHERE SHOWN, USING A PERMANENT MARKING METHOD MARK PART NUMBER AND REVISION

4 CONTACT CWS IF UL CERTIFICATION NEEDED. BUT NOT CERTIFIED. DESIGNED TO MEET UL, CSA, TUV STANDARDS, DUAL OR SPLIT BOBBIN, NON CONCENTRIC.

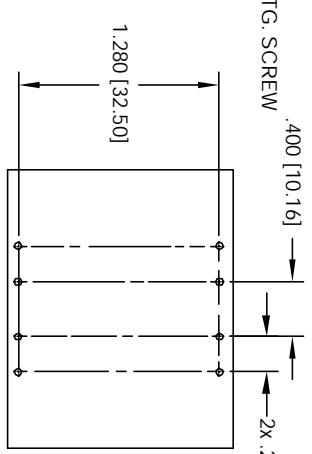
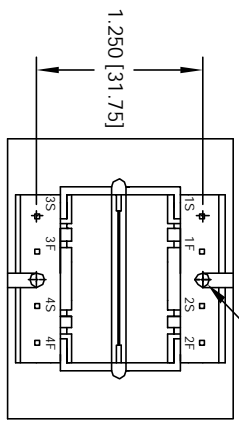
4 CONSTRUCTION:
PRIMARY TO SECONDARY ISOLATION = 4KV, RMS
PRIMARY INPUT VOLTAGE = DUAL 115 VAC, 50 Hz or 60 Hz
PARALLEL CONNECTION = 5V @ 0.5 A
SERIES CONNECTION (3F+4S) = 10V @ 800 mA. CENTER TAP SECONDARY RMS RATING.
VOLT - AMPERES RATING = 2.5 VA

3 SPECIFICATIONS:

2 WIRE: UL RECOGNIZED 130°C RATED MAGNET WIRE
CORE: 50HZ / 60 HZ SILICON LAMINATION

1 BOBBIN RATING CLASS B (130°C) REQUIRED
MATERIAL: UL RECOGNIZED 94V-0 FOR FLAMMABILITY

NOTES: UNLESS OTHERWISE SPECIFIED,
READ NOTES FROM BOTTOM TO TOP



UNLESS OTHERWISE SPECIFIED
DIMENSIONING AND TOLERANCE PER ANSI Y14.5M
ALL DIMENSIONS ARE IN INCHES AND (MILLIMETERS).
TOLERANCE INCHES: \varnothing ±.0030
$\times .00$ ±.010 $\times .01$ ±.020
TOLERANCE METRICES: \varnothing ±.076
$\times .00$ ±.254 $\times .01$ ±.51
ANGLE PROJECTION DO NOT SCALE DRAWING

QTY	CODE IDENT	MFG. P/N	DESCRIPTION	ITEM NO.
			PARTS LIST	
			CWS Coil Winding Specialist	
			1510 E. Edinger Ave. Unit B, Santa Ana, CA 92705	
			TITLE: Power Transformer	
			50/60 Hz, Silicon Lamination	
			SIZE DWG. NO. EHS-2.5-10	REV A
			SCALE 1=1	SHEET 1 OF 1