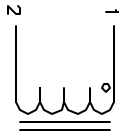


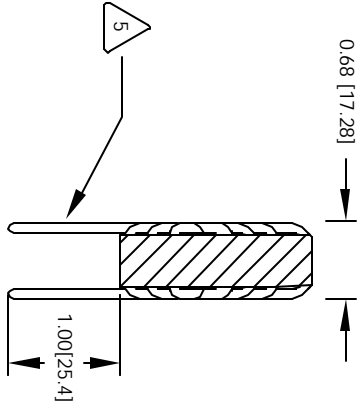
The information contained in this drawing is the sole property of CWS Coil Winding Specialist. Any reproduction in part or whole without written permission of CWS Coil Winding Specialist is prohibited.

REVISION HISTORY

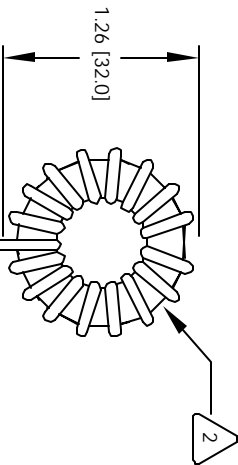
REV	ECN	DESCRIPTION	DATE	BY	CHK	DATE
A		PRODUCTION RELEASE	7/29/05	TKK	JLU	7/29/05



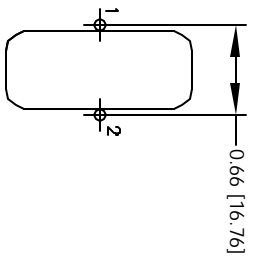
SCHEMATIC



SIDE VIEW



FRONT VIEW



MOUNTING HOLES PATTERN

- 7 BUILT TO ROHS COMPLIANCE AND LEAD FREE
USING A PERMANENT MARKING METHOD
MARK PART NUMBER AND REVISION, IF APPLICABLE
IF NEEDED, WRAP INDUCTOR WITH GLASS TAPE
TO THE CORE
MUST REST FLAT ON PCB, LEADS MUST BE TANGENT
FLUSH WITH THE COIL EDGE, AS SHOWN (I.E. COIL
REMOVE INSULATION AND TIN LEADS 1.00 INCH
- 6
- 5 WIND COILS EVENLY SPACED AROUND THE CORE
CONSTRUCTION:
- 4 HI-POT TEST FOR WINDING TO CORE ISOLATION = 500VDC MIN
CURRENT RATING : 15 AMPS, 20 °C TEMP. RISE, NO AIR FLOW
DCR = 4.0 MILLI-OHMS MAX.
DC BIASED 15.0 AMPS, INDUCTANCE = 10.0 uH
INDUCTANCE = 10.0 uH +10% @ LOW DC BIAS, 100 KHZ, 250mV
SPECIFICATIONS @25°C
- 3 WIRE: UL RECOGNIZED 200°C RATED MAGNET WIRE
CWS BYTE-MARK OR OTHER APPROVED PART
CORE: COATED MPP TOROIDAL CORE
- 2 RATING CLASS B (130°C MIN.) REQUIRED
MATERIAL: UL RECOGNIZED 94V-0 FOR FLAMMABILITY

NOTES: TOROIDAL POWER CHOKE. READ FROM BOTTOM UP

UNLESS OTHERWISE SPECIFIED	UNLESS OTHERWISE SPECIFIED
DIMENSIONS ARE IN INCHES	TOLERANCE METRICS
TOLERANCE METRICS	TOLERANCE METRICS
±0.005	±0.005
±0.010	±0.010
±0.015	±0.015
±0.020	±0.020
±0.030	±0.030
±0.040	±0.040
±0.050	±0.050
±0.060	±0.060
±0.070	±0.070
±0.080	±0.080
±0.090	±0.090
±0.100	±0.100
±0.125	±0.125
±0.150	±0.150
±0.175	±0.175
±0.200	±0.200
±0.250	±0.250
±0.300	±0.300
±0.375	±0.375
±0.450	±0.450
±0.500	±0.500
±0.625	±0.625
±0.750	±0.750
±0.875	±0.875
±1.000	±1.000
±1.250	±1.250
±1.500	±1.500
±1.750	±1.750
±2.000	±2.000
±2.500	±2.500
±3.000	±3.000
±3.750	±3.750
±4.500	±4.500
±5.000	±5.000
±6.000	±6.000
±7.000	±7.000
±8.000	±8.000
±9.000	±9.000
±10.000	±10.000
±12.000	±12.000
±15.000	±15.000
±20.000	±20.000
±25.000	±25.000
±30.000	±30.000
±37.500	±37.500
±45.000	±45.000
±50.000	±50.000
±60.000	±60.000
±70.000	±70.000
±80.000	±80.000
±90.000	±90.000
±100.000	±100.000
±120.000	±120.000
±150.000	±150.000
±200.000	±200.000
±250.000	±250.000
±300.000	±300.000
±375.000	±375.000
±450.000	±450.000
±500.000	±500.000
±600.000	±600.000
±700.000	±700.000
±800.000	±800.000
±900.000	±900.000
±1000.000	±1000.000
±1200.000	±1200.000
±1500.000	±1500.000
±2000.000	±2000.000
±2500.000	±2500.000
±3000.000	±3000.000
±3750.000	±3750.000
±4500.000	±4500.000
±5000.000	±5000.000
±6000.000	±6000.000
±7000.000	±7000.000
±8000.000	±8000.000
±9000.000	±9000.000
±10000.000	±10000.000
±12000.000	±12000.000
±15000.000	±15000.000
±20000.000	±20000.000
±25000.000	±25000.000
±30000.000	±30000.000
±37500.000	±37500.000
±45000.000	±45000.000
±50000.000	±50000.000
±60000.000	±60000.000
±70000.000	±70000.000
±80000.000	±80000.000
±90000.000	±90000.000
±100000.000	±100000.000
±120000.000	±120000.000
±150000.000	±150000.000
±200000.000	±200000.000
±250000.000	±250000.000
±300000.000	±300000.000
±375000.000	±375000.000
±450000.000	±450000.000
±500000.000	±500000.000
±600000.000	±600000.000
±700000.000	±700000.000
±800000.000	±800000.000
±900000.000	±900000.000
±1000000.000	±1000000.000

CODE IDENT	MFG. P/N	DESCRIPTION	ITEM NO.
TKK		COILS COM, INC	
JLU		15A Toroid Inductor	
JLU		MP270-100M-15A	