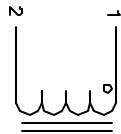


The information contained in this drawing is the sole property of CW's Coil Winding Specialist. Any reproduction in part or whole without written permission of CW's Coil Winding Specialist is prohibited.

REVISION HISTORY

REV	ECN	DESCRIPTION	DATE	BY	CHK	DATE
A		PRODUCTION RELEASE	2/9/04	TKK	JLUU	2/9/04



SCHEMATIC

- 6 USING A PERMANENT MARKING METHOD
MARK PART NUMBER AND REVISION, IF APPLICABLE
WRAP INDUCTOR WITH GLASS TAPE

- 5 TO THE CORE
MUST REST FLAT ON PCB, LEADS MUST BE TANGENT
FLUSH WITH THE COIL EDGE, AS SHOWN (I.E. COIL
REMOVE INSULATION AND TIN LEADS (DIMENSION D)

- 4 WIND COILS EVENLY SPACED AROUND THE CORE
CONSTRUCTION:

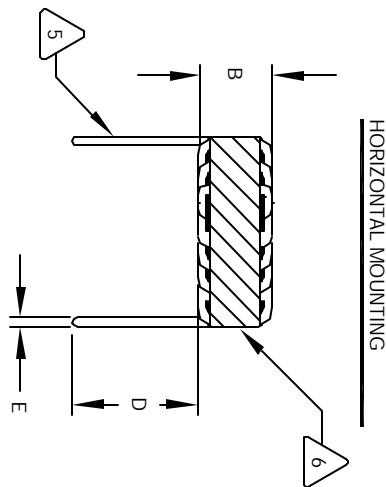
TO INSURE INTEGRITY OF INSULATION
HI-POT TEST FOR WINDING TO CORE ISOLATION AT 500VDC
DCR MEASURED USING QUADTECH 2200
INDUCTANCE MEASURED AT 1 KHz, 250mV

- 3 SPECIFICATIONS:

WIRE: UL RECOGNIZED 200°C RATED MAGNET WIRE
CWS BYTE-MARK OR OTHER APPROVED PART
CORE: COATED HIGH FLUX TOROIDAL CORE

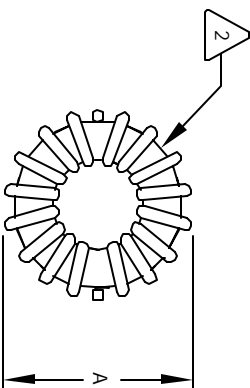
- 2 RATING CLASS B (130°) REQUIRED
1 MATERIAL: UL RECOGNIZED 94V-0 FOR FLAMMABILITY

NOTES: UNLESS OTHERWISE SPECIFIED.

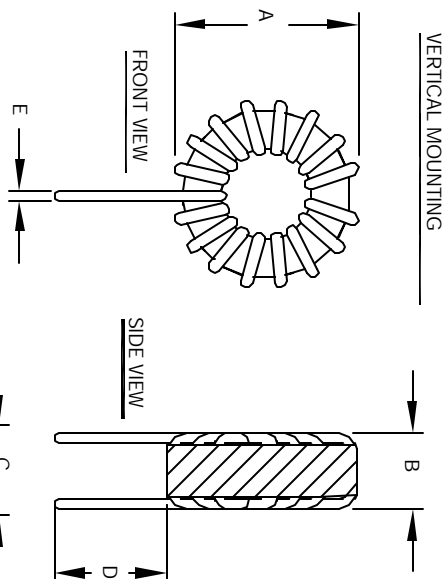


HORIZONTAL MOUNTING

FRONT VIEW



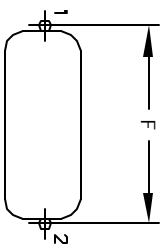
BOTTOM VIEW



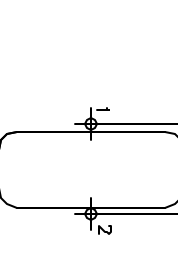
VERTICAL MOUNTING

FRONT VIEW

SIDE VIEW



MOUNTING HOLES PATTERN



MOUNTING HOLES PATTERN

CODE IDENT	MFG. P/N	DESCRIPTION	ITEM NO.
		PARTS LIST	
AUTOCAD	X		
SOLIDWORKS			
SIGN	DATE	CWS Coil Winding Specialist www.cwivs.com	1510 E. Edinger Ave. Unit B, Santa Ana, CA 92705
DRAWN	TKK	2/8/04	
CHKD	JLUU	2/9/04	
ENGR	KSUU	2/9/04	
APPR.	JLUU	2/10/04	
SIZE		DRW. NO.	REV
SCALE		B	B
2=1		HF-SERIES	1

UNLESS OTHERWISE SPECIFIED
INTERSECTING AND TOLERANCE PER AWS 11.5M
ALL DIMENSIONS ARE IN INCHES AND (MILLIMETERS)
TOLERANCE INCHES
XXXX-XXXX .XX±.015
TOLERANCE METERS
XXXX-XXXX .127 .XX±.08
ANGLE PROJECTION
DO NOT SCALE DRAWING