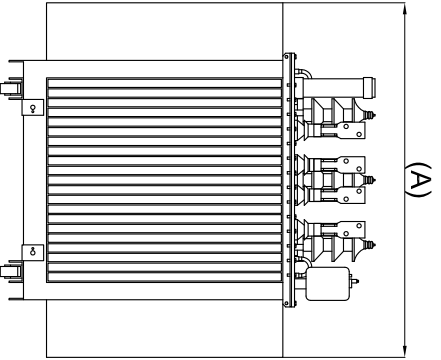


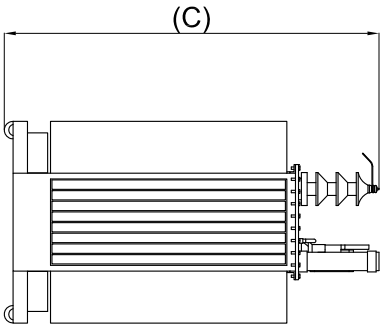
The information contained in this drawing is the sole property of Coil Winding Specialist Inc. (CWS)
 Any reproduction in part or whole without written permission of CWS is prohibited.

DIMENSIONAL TOLERANCE INCHES [MM]			
A	B	C	
Typ	Max	Min	
48.43 [1230]	27.60 [700]	51.18 [1300]	

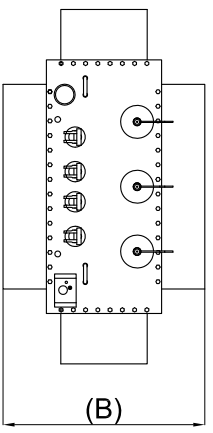
REVISION HISTORY			
REV	ECN	DESCRIPTION	SIGN & DATE
A	N/A	PRODUCTION RELEASE	BY DATE CHK DATE
			AK 03/15/16 JL 03/15/16



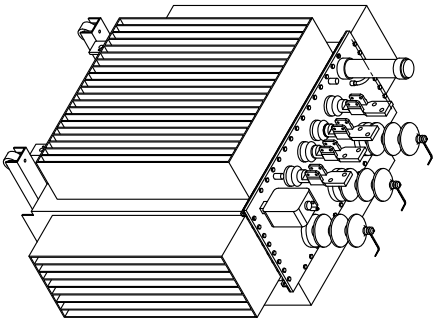
**FRONT
VIEW**



**SIDE
VIEW**



**TOP
VIEW**



**ISOMETRIC
VIEW**

- Frequency: 50 / 60 Hz
 - Phase: 3 Phase
 - High Voltage (HV, VAC): 11,000 Volts
 - Low voltage (LV, VAC): 415 Volts
 - Weight: 1260 Kgs
 - KVA Rating: 250 KVA
- SPECIFICATIONS:
- 1 MATERIAL: UL RECOGNIZED
 - 2

NOTES: UNLESS OTHERWISE SPECIFIED READ FROM BOTTOM UP.

CAGE CODE: 5DME2

UNLESS OTHERWISE SPECIFIED		AUTOCAD	
DIMENSIONING AND TOLERANCE PER ANSI Y14.5M		SOLIDWORKS	
ALL DIMENSIONS ARE IN INCHES AND (MILLIMETERS)		SIGN	
TOLERANCE INCHES: ± 0.030		DATE	
TOLERANCE METRICS: ± 0.762		DRAWN AK 3/15/16	
ANGLE PROJECTION: $\angle = 0^{\circ} 30'$		CHECKED BO 3/15/16	
DO NOT SCALE DRAWING		ENGR. JLAU 3/15/16	
		APPR. JLAU 3/15/16	
TITLE:		www.coliws.com	
3 Phase Oil Filled Distribution Transformers for 50/60 Hz		353 West Grove Ave Orange, California, 92685	
SCALE: N/A		SIZE: DWG. NO. 3P250K-11KV-415V	
SHEET 1 OF 1		REV A	