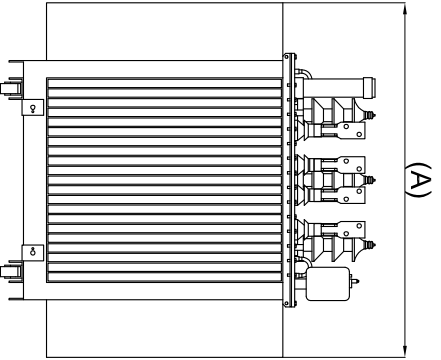


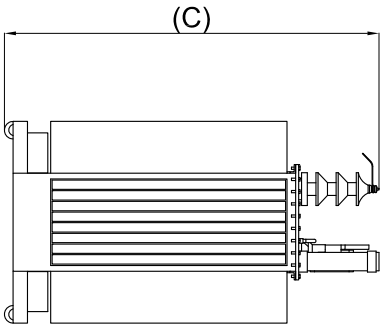
The information contained in this drawing is the sole property of Coil Winding Specialist Inc. (CWS)  
 Any reproduction in part or whole without written permission of CWS is prohibited.

DIMENSIONAL TOLERANCE INCHES [MM]			
A	B	C	
Typ	Max	Min	
75.20 [1910]	58.30 [1480]	58.30 [1480]	

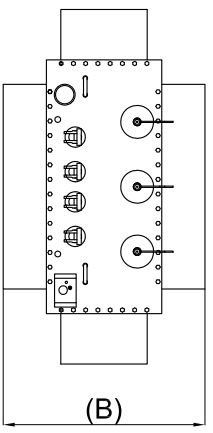
REVISION HISTORY			
REV	ECN	DESCRIPTION	SIGN & DATE
A	N/A	PRODUCTION RELEASE	BY DATE CHK DATE
			AK 04/14/16 JL 04/14/16



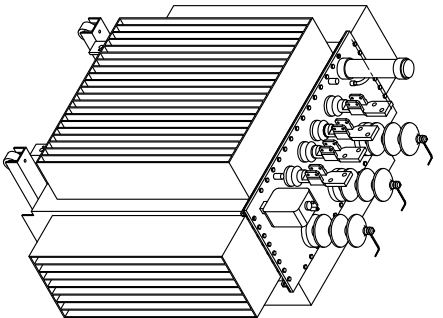
**FRONT VIEW**



**SIDE VIEW**



**TOP VIEW**



**ISOMETRIC VIEW**

Frequency: 50 / 60 Hz  
 Phase: 3 Phase  
 High Voltage (HV, VAC): 22,900 Volts  
 Low voltage (LV, VAC): 415 Volts  
 Weight: 2150 Kgs  
 KVA Rating: 750 KVA

- SPECIFICATIONS:  
 2 MATERIAL: UL RECOGNIZED

NOTES: UNLESS OTHERWISE SPECIFIED READ FROM BOTTOM UP.

CAGE CODE: SDME2

UNLESS OTHERWISE SPECIFIED		AUTOCAD	
DIMENSIONING AND TOLERANCE PER ANSI Y14.5M		SOLIDWORKS	
ALL DIMENSIONS ARE IN INCHES AND (MILLIMETERS)		SIGN	
TOLERANCE INCHES: $\pm 0.030$		DATE	
TOLERANCE METRICS: $\pm 0.762$		DRAWN AK 4/14/16	
ANGLE PROJECTION: $\times \times \times \times 127$		CHECKED BO 4/14/16	
DO NOT SCALE DRAWING		ENGR. JLAU 4/14/16	
		APPR. JLAU 4/14/16	
www.coliws.com		TITLE:	
353 West Grove Ave		3 Phase Oil Filled Distribution	
Orange, California, 92885		Transformers for 50/60 Hz	
SCALE	N/A	SIZE	DWG. NO.
		B	3P750K-23KV-415V
SHEET	1	OF	1
REV			A