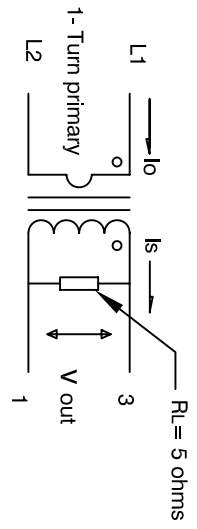


The information contained in this drawing is the sole property of CWS Coil Winding Specialist. Any reproduction in part or whole without written permission of CWS Coil Winding Specialist is prohibited.

REVISION HISTORY

| REV | ECN | DESCRIPTION | BR | DATE | CHK | DATE |
|-----|-----|--|-----|---------|------|---------|
| A | | PRODUCTION RELEASE | RUU | 5/25/04 | JLJU | 5/25/04 |
| B | | CHANGE TO NEW HIGHER TEMPERATURE EPOXY | KJC | 8/26/08 | GN | 8/26/08 |
| B1 | | CHANGED TO ORIGINAL EPOXY | GN | 7/30/09 | AM | 7/30/09 |
| C | | CORRECTION TO DESCRIPTION AS 50/60 HZ | KJC | 3/14/11 | JL | 3/14/11 |
| D | | CORRECTION TO DESCRIPTION AS 50/60 HZ | KJC | 3/23/12 | JL | 3/23/12 |



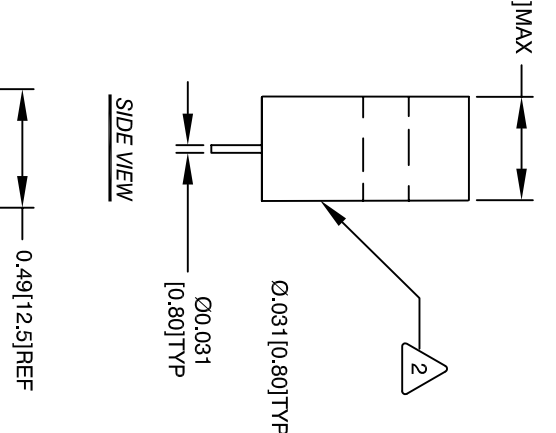
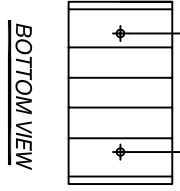
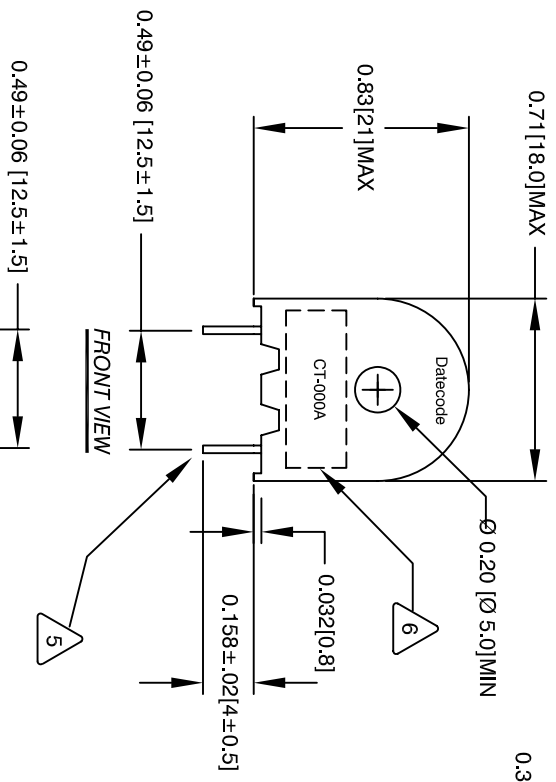
Note: The 1 - turn primary winding and the terminating resistor RL are not provided. For reference information only.

- 7 BUILT TO ROHS COMPLIANCE AND LEAD FREE.
- 6 DATE CODE WHERE SHOWN
MARK PART NUMBER, REVISION NUMBER
- 5 REMOVE INSULATION, SOLDERED TO LEADS
- 4 CONSTRUCTION: ENCAPSULATED USING BOBBIN.

- 3 HI-POT VOLTAGE = 2.5 KV/1mA
OPERATING TEMP. = -25°C TO 125°C
BURDEN RESISTOR = 5 OHMS REF
LINEARITY (ACCURACY) = 2% FROM 25 AMP TO 50 AMP
LINEARITY (ACCURACY) = 1% TO 25 AMP
DC RESISTANCE = 43 OHMS MAX
RECOMMENDED CURRENT RANGE: 0.25 AMP TO 50 AMP
PRIMARY CURRENT RATING = 25A @ 50/60 HZ
TURNS RATIO = 1000 TURNS
SPECIFICATIONS @ 25 °C :

- 2 WIRE: UL RECOGNIZED 130 °C RATED MAGNET WIRE
CWS BYTEMARK OR OTHER APPROVED PART
CORE: TAPE WOUND

- 1 BOBBIN RATING CLASS B (130 °C) REQUIRED MATERIAL: UL RECOGNIZED 94V-0 FOR FLAMMABILITY
- NOTES: UNLESS OTHERWISE SPECIFIED, READ FROM BOTTOM UP.
ENCAPSULATED CURRENT TRANSFORMER



| QTY | CODE | MFG. P/N | DESCRIPTION | ITEM NO. |
|-----|-------|----------|-------------|----------|
| | IDENT | | | |

| AUTOCAD | | SIGNATURE | | DATE | | TITLE | |
|--|--|-----------|--|------|--|-------|--|
| UNLESS OTHERWISE SPECIFIED | | | | | | | |
| DIMENSIONING AND TOLERANCE PER ANSI Y14.5M | | | | | | | |
| ALL DIMENSIONS ARE IN INCHES AND [MILLIMETERS] | | | | | | | |
| TOLERANCE INCHES: | | | | | | | |
| XXX±.010 XX±.020 | | | | | | | |
| XXX±.254 XX±.51 | | | | | | | |
| ANGLE PROJECTION | | | | | | | |
| DO NOT SCALE DRAWING | | | | | | | |

PARTS LIST

| QTY | CODE | MFG. P/N | DESCRIPTION | ITEM NO. |
|-----|-------|----------|-------------|----------|
| | IDENT | | | |
| | | | | |