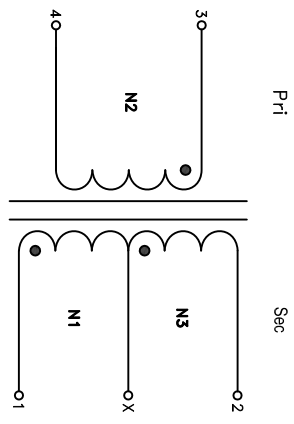


The information contained in this drawing is the sole property of Coil Winding Specialist, Inc. Any reproduction in part or whole without written permission of Coil Winding Specialist, Inc. is prohibited.

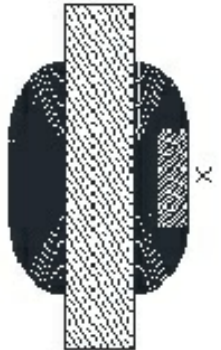
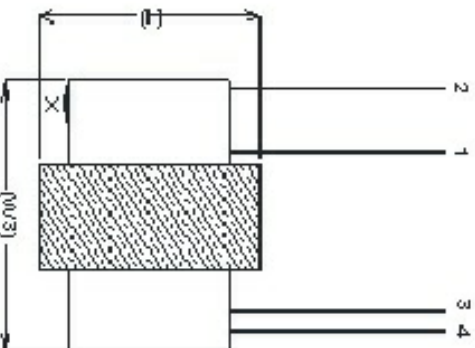
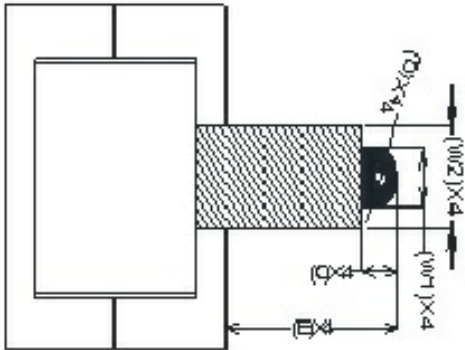
DIMENSIONAL TOLERANCE INCHES (MM)									
C	D	E	L	H	W1	W2	W3		
(TYP)	(TYP)	(TYP)	(MAX)	(MAX)	Typ	Typ	MAX		
0.79 [20.0]	0.24 [6.0]	3.94 [100.0]	5.32 [135.0]	5.20 [132.0]	0.89 [22.5]	1.50 [38.0]	4.25 [108.0]		

REVISION HISTORY		SIGN & DATE			
REV	ECN	BY	DATE	CHK	DATE
A		AK	9/30/15	JLJU	9/30/15

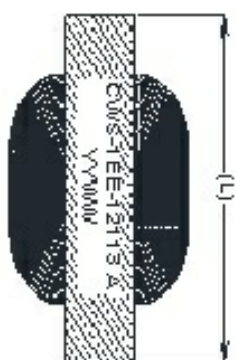
DESCRIPTION	BR	DATE	CHK	DATE
PRODUCTION RELEASE	AK	9/30/15	JLJU	9/30/15



SCHEMATIC



Bottom View



Top View

- 7 BUILT TO ROHS COMPLIANCE
- 6 LABEL PART NUMBER AND REVISION
- 5 VARNISHED AND CURE
- 4 APPLY SILICON IF REQUIRED
- 3 WRAP TAPE AROUND CORES WITH CORES AND NOMEX PRE FORMED FLAT COPPER SHEETS CONSTRUCTION:
- 2 RECOMMENDED AMBIENT OPERATING TEMP: -40°C TO 105°C
- 1 DCR PIN:1-2 = 27.5 MILLI-OHM MAX.
- 1 L PIN:1-2 = 30.68mH ± 30%, MEASURED AT 10 KHZ, 0.100V
- 1 SPECIFICATIONS:
- 1 BAKE VARNISH
- 1 SILICON DOW CORNING OR EQUAL
- 1 OUTER WRAP: 3M GLASS OR EQUAL
- 1 MATERIAL: UL RECOGNIZED

NOTES: UNLESS OTHERWISE SPECIFIED READ FROM BOTTOM UP.

CAGE CODE: 5DME2

PARTS LIST		TITLE:	
AUTOCAD	X	DATE	9/30/15
SOLIDWORKS		DRWN	AK
SIGN		DEND	JLJU
		ENGR	JLJU
		APPR	BO
		DATE	9/30/15
		DATE	9/30/15

TRANSFORMER

www.coilw.com
353 W. GROVE AVE
ORANGE, CA 92665

SIZE DWG. NO. CWS-1EE-12113
SCALE NOT TO SCALE SHEET 1 OF 1