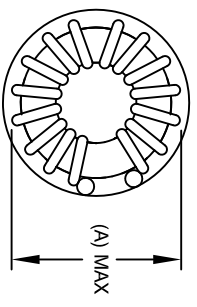
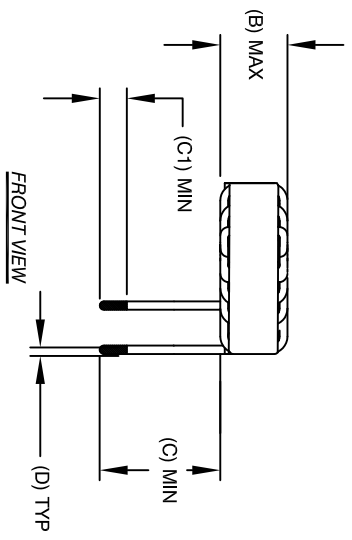


The information contained in this drawing is the sole property of Coil Winding Specialist. Any reproduction in part or whole without written permission of Coil Winding Specialist is prohibited.

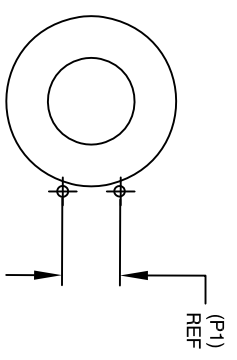
DIMENSIONALS MEASURED IN INCHES AND (MM)					
A (OD) MAX	B (HGT) MAX	C (LEAD) MIN	D (LEAD OD) TYP	C1 (TN) NOM	P1 REF
2.067" [52.50]	1.083" [27.50]	2.677" [68.00]	.067" [1.69]	1.083" [27.50]	.719" [18.25]

REVISION HISTORY		SIGN & DATE	
REV	ECN	DESCRIPTION	DATE
A	N/A	RELEASE TO PRODUCTION	04/05/12

# HORIZONTAL



BOTTOM VIEW



MOUNTING PATTERN

- MEASURED AT 25°C
- RESISTANCE: 1.25 Ω MAX
- 1KHz, 250mV, MEASURED AT 25°C
- INDUCTANCE: 45 uH MIN AT
- FROM CORE TO WIRE AT 1mA, 1S
- HI-POT1500 VDC
- MATERIAL: UL RATED

NOTES: UNLESS OTHERWISE STATED, READ NOTES FROM BOTTOM UP

EP FORM0005 REV 3 (10/27/08)

UNLESS OTHERWISE SPECIFIED DIMENSIONS ARE IN INCHES  
 TOLERANCES:  
 ANGULAR: +/- 1°  
 MACH +/- .25° BEND +/- .50°  
 ONE PLACE DECIMAL +/- .03  
 TWO PLACE DECIMAL +/- .01  
 THREE PLACE DECIMAL +/- .005  
 RADII +/- .01  
 FRACTIONAL +/- 1/16  
 DO NOT SCALE DRAWING

AUTOCAD SOLIDWORKS SIGN		DATE		TITLE	
AK		04/05/12		EM I RFI INDUCTOR	
JM		04/05/12			
JLJU		04/05/12			
JLJU		04/05/12			
JLJU		04/05/12			

## PARTS LIST

SALES@COILWS.COM/ CWS Coil Winding Specialist.  
 WWW.COILWS.COM/ 353 W Grove Ave  
 Orange, CA 92665

APPR.	DATE	SIZE	TWK. NO.	SCALE	REV
JLJU	04/05/12	N/A	CWS-1HF-12100	N/A	A

CAD-FILE:

SHEET	1	OF	1
-------	---	----	---