

The information contained in this drawing is the sole property of CWS Coil Winding Specialist. Any reproduction in part or whole without written permission of CWS Coil Winding Specialist is prohibited.

DIMENSIONAL TOLERANCES INCHES (MM)									
A	B	C	D	E	F	X	Y		
MAX	MAX	MIN	REF	MAX	MAX	REF	REF		
2.05 [52.00]	1.42 [36.00]	0.50 [12.70]	0.08 [2.05]	1.73 [44.00]	2.05 [52.00]	1.33 [33.70]	1.26 [32.10]		

REVISION HISTORY				
REV	ECN	DESCRIPTION	BY	DATE
A		PRE-PRODUCTION RELEASE	JL	06/02/17

USING A PERMANENT MARKING METHOD

6 IF NEEDED, WRAP INDUCTOR WITH GLASS TAPE TO THE CORE

TO THE CORE

5 MUST REST FLAT ON PCB. LEADS MUST BE TANGENT FLUSH WITH THE COIL EDGE, AS SHOWN (I.E. COIL REMOVE INSULATION AND TIN LEADS 0.50 INCH

4 WIND COILS EVENLY SPACED AROUND THE CORE CONSTRUCTION:

HI-POT TEST FOR WINDING TO CORE ISOLATION = 500VDC MIN

CURRENT RATING : 25 AMPS, 40 °C TEMP. RISE, NO AIR FLOW
DCR = 12.0 MILLI-OHMS MAX.

INTERWINDING CAPACITANCE = 1.85 pF TYPICAL @ SRF
 $|z| = 11.5 \text{ k}\Omega @ \text{SRF}$

SRF ~ 5.3 MHz TYPICAL

DC BIASED = 25 AMPS, INDUCTANCE = 79 uH
DC BIASED = 12 AMPS, INDUCTANCE = 90 uH

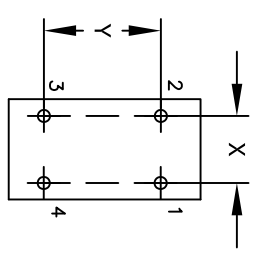
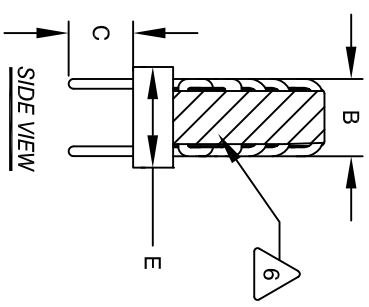
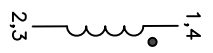
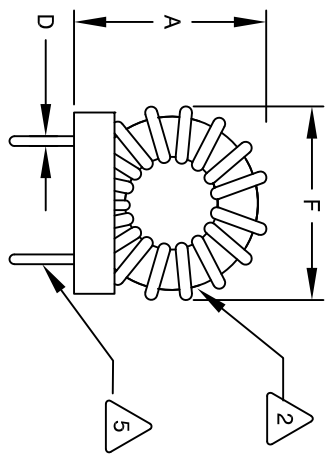
3 TERMINAL 1 AND 3 ARE INTERNALLY CONNECTED
INDUCTANCE = 95 uH ±10% @ LOW DC BIAS, 1 KHz, 250mV SPECIFICATIONS:

WIRE: UL RECOGNIZED 200°C RATED MAGNET WIRE

2 CWS BYTEMARK OR OTHER APPROVED PART
CORE: COATED HIGH FLUX TOROIDAL CORE

1 RATING CLASS B (130°C MIN), REQUIRED
MATERIAL: UL RECOGNIZED 94V-0 FOR FLAMMABILITY

NOTES: TOROIDAL POWER CHOKE. ALL DIMENSIONS IN INCHES



CODE	IDENT	MFG. P/N	DESCRIPTION	ITEM NO.
PARTS LIST				
AUTOCAD	SOLIDWORKS	X		
UNLESS OTHERWISE SPECIFIED				
DIMENSIONING AND TOLERANCE PER ANSI Y14.5M AND [DIMETERS].				
TOLERANCE INCHES: ϕ = ±0.30°				
TOLERANCE METRICS: ϕ = ±0.005				
XX = ±0.15				
XXX = ±0.05				
XX = ±0.15				
XXX = ±0.05				
XX = ±0.15				
XXX = ±0.05				
ANGLE PROJECTION				
DO NOT SCALE DRAWING				
DATE	DATE	DATE	DATE	DATE
06/02/17	06/02/17	06/02/17	06/02/17	06/02/17
ENGR. KSUM	APPR. JL AU			
TITLE:			CWS Coil Winding Specialist.	
DRAWN: JL			1510 E. Edinger Ave.	
CHECKED: JL AU			Unit B, Santa Ana, CA. 92705	
DATE: 06/02/17				
APPR: JL AU				
DATE: 06/02/17				
SIZE: Dwg. No.			CWS-1MF-11805	
SCALE: NOT TO SCALE			REV A	
			SHEET 1 OF 1	