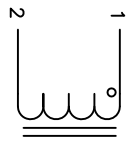


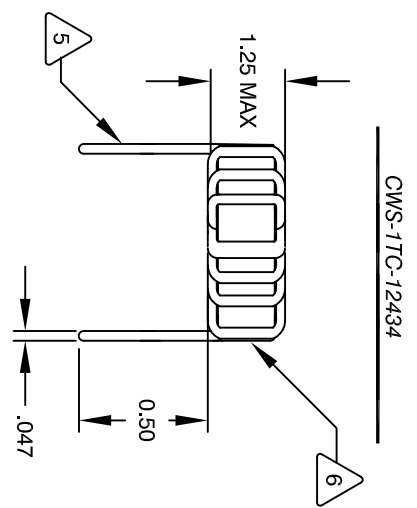
The information contained in this drawing is the sole property of CWS Coil Winding Specialist. Any reproduction in part or whole without written permission of CWS Coil Winding Specialist is prohibited.

REVISION HISTORY

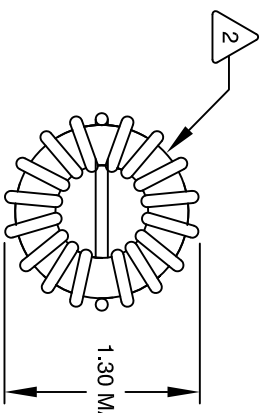
REV	ECN	DESCRIPTION	SIGN & DATE			
			BY	DATE	CHK	DATE
A	N/A	PRODUCTION RELEASE	TDK	2/09/04	JLU	2/9/04



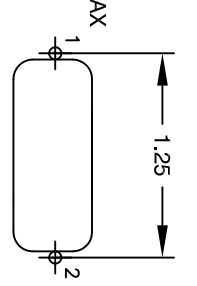
SCHEMATIC



FRONT VIEW



BOTTOM VIEW



MOUNTING HOLES PATTERN

6 USING A PERMANENT MARKING METHOD MARK PART NUMBER AND REVISION, IF APPLICABLE IF NEEDED, WRAP INDUCTOR WITH GLASS TAPE TO THE CORE

5 MUST REST FLAT ON PCB, LEADS MUST BE TANGENT FLUSH WITH THE COIL EDGE, AS SHOWN (I.E. COIL REMOVE INSULATION AND TIN LEADS 0.75 INCH

4 WIND COILS EVENLY SPACED AROUND THE CORE CONSTRUCTION:

HI-POT TEST FOR WINDING TO CORE ISOLATION = 500VDC MIN  
 CURRENT RATING : 10 AMPS, 40 °C TEMP. RISE, NO AIR FLOW  
 DCR = 23 MILLI-OHMS MAX.  
 DC BIASED 8 AMPS, INDUCTANCE = 85 UH  
 DC BIASED 10 AMPS, INDUCTANCE = 80 UH  
 INDUCTANCE = 100 UH +/-10% @ LOW DC BIAS, 1 KHZ, 250mV  
 3 SPECIFICATIONS:

2 WIRE: UL RECOGNIZED 200°C RATED MAGNET WIRE  
 CWS BYTE-MARK OR OTHER APPROVED PART  
 CORE: COATED HIGH FLUX TOROIDAL CORE

1 RATING CLASS B (130°C MIN.) REQUIRED MATERIAL: UL RECOGNIZED

NOTES: TOROIDAL POWER CHOKE. ALL DIMENSIONS IN INCHES

UNLESS OTHERWISE SPECIFIED		AUTOCAD		X	
DIMENSIONING AND TOLERANCE PER ANSI Y14.5M AND [MILLIMETERS]		SOLIDWORKS			
TOLERANCE INCHES: XXX=±.005 XX=±.015 XX=±.127 X=±.25		DRAWN		AK	
ANGLE PROJECTION		CHECKED		JM	
DO NOT SCALE DRAWING		ENGR.		BO	
		APPR.		BO	
TITLE:		DATE		3/3/14	
CWS COM, INC		DATE		3/3/14	
www.cwls.com		DATE		3/3/14	
CWS Coil Winding Specialist.		DATE		3/3/14	
353 W. Grove Ave.		DATE		3/3/14	
Orange, CA 92865		DATE		3/3/14	
EMI RFI INDUCTOR		DATE		3/3/14	
SIZE (ING. NO.)		DATE		3/3/14	
B		DATE		3/3/14	
CWS-1TC-12434		DATE		3/3/14	
N/A		DATE		3/3/14	
SHEET		DATE		3/3/14	
1		DATE		3/3/14	
OF		DATE		3/3/14	
1		DATE		3/3/14	