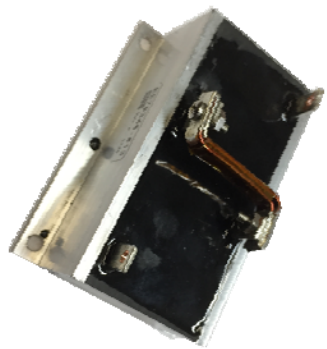
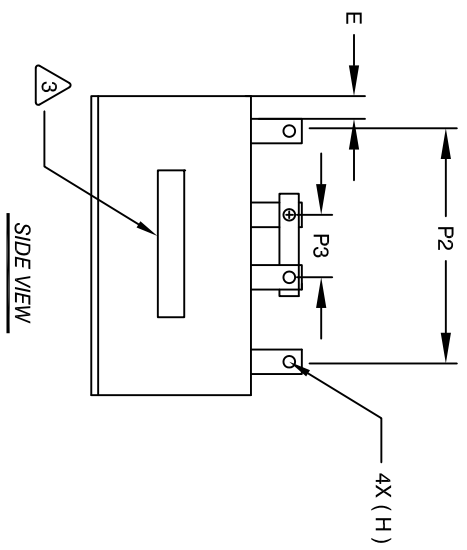
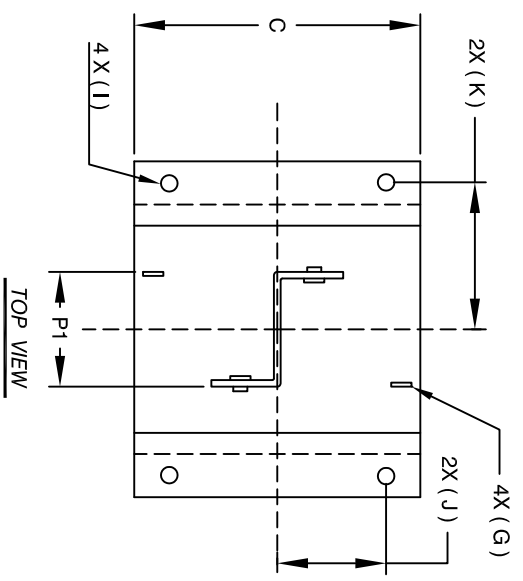
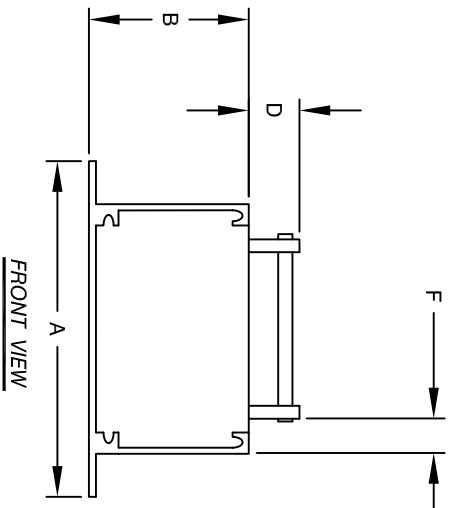


The information contained in this drawing is the sole property of Coil Winding Specialist, Inc. Any reproduction in part or whole without written permission of Coil Winding Specialist, Inc. is prohibited.

DIMENSIONAL TOLERANCES INCHES (MM)													
A	B	C	D	E	F	G	H	I	J	K	P1	P2	P3
MAX	MAX	MAX	MAX	MIN	MIN	REF	REF	REF	REF	REF	1.14	2.50	0.59
2.44 [62.00]	1.34 [34.00]	3.27 [83.00]	0.55 [14.00]	0.24 [6.00]	0.24 [6.00]	0.06±0.27 [1.6±0.69]	0.12 [3.05]	0.18 [4.55]	1.46 [37.00]	1.06 [27.00]	1.14 [29.00]	2.50 [63.40]	0.59 [15.00]



- APPLICATION: ENERGY STORAGE FILTER, SWINGING CHOKE
 - BUILT TO ROHS COMPLIANCE.
 - LABEL PART NUMBER AND REVISION WHERE SHOWN
- WEIGHT: 511 GRAM (TYP)
 MAX INDUCTOR TEMP RATING: 200°C
 RECOMMENDED AMBIENT OPERATING TEMP: -40°C TO 85°C
 HI-POT TEST 1000VDC @ 2mA, 1 MIN. TERMINALS TO CASE
 INTERWINDING CAPACITANCE @ SRF = 11.5pF (TYP)
 |Z| @ SRF = 4 KILO-OHM (TYP)
 SRF = 7.7 MHz (TYP)
 RATED CURRENT: 90 AMPS WITH HEAT SINK OR AIRFLOW
 DCR = 5 MILLI-OHM MAX.
 L @ DC BIAS: SEE TABLE
 L = 57 uH ± 15% AT 10 KHZ, 0.25V, ZERO DC BIAS
- 2 SPECIFICATIONS:
 ENCLOSURE: POTTED AND ALUMINUM METAL FRAME
 WIRE: 200°C RATED MAGNET WIRE UL APPROVED
 CORE: POWDER CORE
- 1 MATERIALS:
 NOTES: UNLESS OTHERWISE SPECIFIED, READ FROM BOTTOM UP.
 CAGE CODE: 5DME2



SCHEMATIC

DC-BIAS	L
0A	57 uH
10A	52 uH
20A	47 uH
30A	38 uH
40A	32 uH
50A	27 uH

REVISION HISTORY			SIGN & DATE			
REV	ECN	DESCRIPTION	BY	DATE	CHK	DATE
A	151204	PRODUCTION RELEASE	UL	06/29/17	BO	06/29/17

UNLESS OTHERWISE SPECIFIED		AUTOCAD		X	
DIMENSIONING AND TOLERANCE PER ANSI Y14.5M		SOLIDWORKS		SIGN	
ALL DIMENSIONS ARE IN INCHES AND [MILLIMETERS].		DRAWN		DATE	
TOLERANCE INCHES: ± 0.030		JL		06/29/17	
TOLERANCE METERS: ± 0.75		CHKD		JM	
ANGLE PROJECTION		ENGR.		BO	
DO NOT SCALE DRAWING		APPR.		JLJU	
		DATE		06/29/17	

PARTS LIST		www.coilw.com		Coil Winding Specialist, Inc.	
TITLE:		scles@coilw.com		353 W. GROVE AVE	
High Current Helical Inductor				ORANGE, CA 92665	
57 uH, 90 Amps, Horizontal					
SIZE	DWG. NO.	EE70340-213		REV	A
SCALE	NOT TO SCALE	SHEET 1 OF 1			