

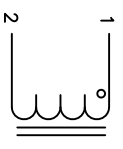
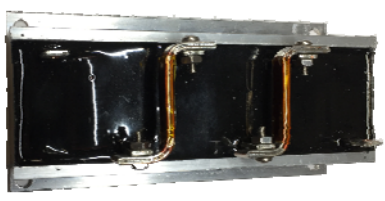
The information contained in this drawing is the sole property of Coil Winding Specialist, Inc. Any reproduction in part or whole without written permission of Coil Winding Specialist, Inc. is prohibited.

DIMENSIONAL TOLERANCES INCHES [MM]

A	B	C	D	E	F	G	H	I	J	K	P1	P2	P3
MAX	MAX	MAX	MAX	MIN	MIN	REF	REF	REF	REF	REF	1.14	3.86	0.59
2.44 [62.00]	1.34 [34.00]	4.94 [123.00]	0.55 [14.00]	0.24 [6.00]	0.24 [6.00]	0.06±0.27 [1.6±0.69]	0.12 [3.05]	0.18 [4.55]	2.20 [56.00]	2.20 [27.00]	1.14 [29.00]	3.86 [98.00]	0.59 [15.00]

DC-BIAS L

0A	85 uH
10A	79 uH
20A	66.5 uH
30A	55 uH
40A	46.5 uH
50A	40 uH



SCHEMATIC

- APPLICATION: ENERGY STORAGE FILTER, SWINGING CHOKE
- BUILT TO ROHS COMPLIANCE.
- LABEL PART NUMBER AND REVISION WHERE SHOWN

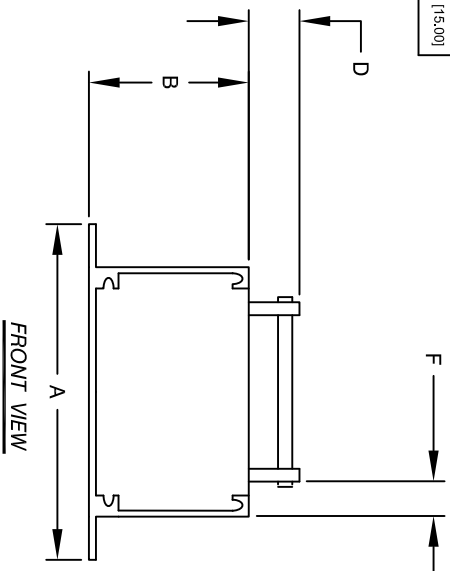
WEIGHT: 1054 GRAM (TYP)
 MAX INDUCTOR TEMP RATING: 200 °C
 RECOMMENDED AMBIENT OPERATING TEMP: -40°C TO 85°C
 HI-POT TEST 1000VDC @ 2mA, 1 MIN. TERMINALS TO CASE
 INTERWINDING CAPACITANCE @ SRF = 15pF (TYP)
 |Z| @ SRF=4.7 KILO-OHM (TYP)
 SRF=4.6 MHZ (TYP)
 RATED CURRENT: 90 AMPS WITH HEAT SINK OR AIRFLOW
 DCR = 6.5 MILLIOHM MAX.
 L @ DC BIAS: SEE TABLE
 L = 85 uH ± 15% NOM AT 10 KHZ, 0.25V, ZERO DC BIAS

2 SPECIFICATIONS:

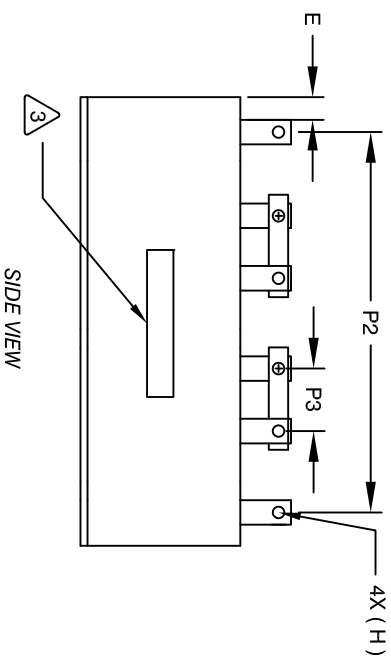
ENCLOSURE: POTTED AND ALUMINUM METAL FRAME
 WIRE: 200°C RATED MAGNET WIRE UL APPROVED
 CORE: POWDER CORE

1 MATERIALS:

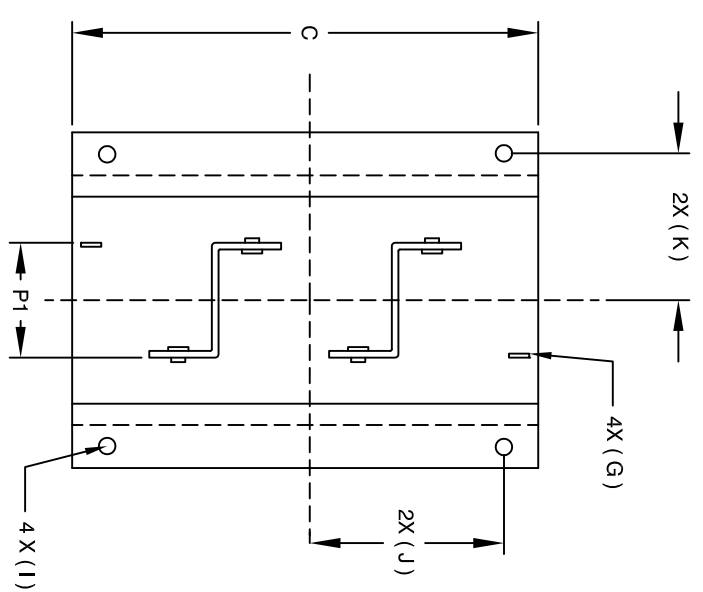
NOTES: UNLESS OTHERWISE SPECIFIED, READ FROM BOTTOM UP.
 CAGE CODE: 5DMEZ



FRONT VIEW



SIDE VIEW



TOP VIEW

REVISION HISTORY		SIGN & DATE		
REV	ECN	DESCRIPTION	BY	DATE
A	151204	PRODUCTION RELEASE	JL	07/13/17

UNLESS OTHERWISE SPECIFIED		AUTOCAD		X		PARTS LIST	
DIMENSIONING AND TOLERANCE PER ANSI Y14.5M		SOLIDWORKS		SIGN		www.coilws.com	
ALL DIMENSIONS ARE IN INCHES AND [MILLIMETERS].		DRAWN JL		DATE 07/13/17		353 W. GROVE AVE	
TOLERANCE INCHES: .XX±.010 .X±.020		ENGR. BO		DATE 08/29/17		ORANGE, CA 92865	
TOLERANCE METRICS: .XX±.51		APPR. JLAU		DATE 08/29/17		Coil Winding Specialist, Inc.	
ANGLE PROJECTION		DO NOT SCALE DRAWING		TITLE: High Current Helical Inductor		SIZE Dwg. NO. EE70340-313	
				SCALE NOT_TO_SCALE		SHEET 1 OF 1	