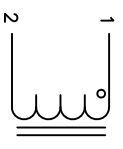


The information contained in this drawing is the sole property of Coil Winding Specialist, Inc. Any reproduction in part or whole without written permission of Coil Winding Specialist, Inc. is prohibited.

DIMENSIONAL TOLERANCES INCHES (MM)

A	B	C	D	E	F	G	H	I	J	K	L	M	P1	P2	P3
MAX	MAX	MAX	MAX	MIN	MIN	REF	REF	REF	REF	REF	REF	MAX	MAX	MAX	MAX
2.44 [62.00]	1.34 [34.00]	4.94 [123.00]	0.55 [14.00]	0.24 [6.00]	0.24 [6.00]	0.06±0.27 [1.6±0.69]	0.12 [3.05]	0.18 [4.55]	2.20 [56.00]	1.06 [27.00]	0.47 [12.00]	3.15 [80.00]	1.14 [29.00]	3.86 [98.00]	0.59 [15.00]

DC-BIAS	L
0A	85 uH
10A	79 uH
20A	66.5 uH
30A	55 uH
40A	46.5 uH
50A	40 uH



SCHEMATIC

- 1
- 2
- 3
- 4 BUILT TO ROHS COMPLIANCE.
- 5 APPLICATION: ENERGY STORAGE FILTER, SWINGING CHOKE.

3 LABEL PART NUMBER AND REVISION WHERE SHOWN

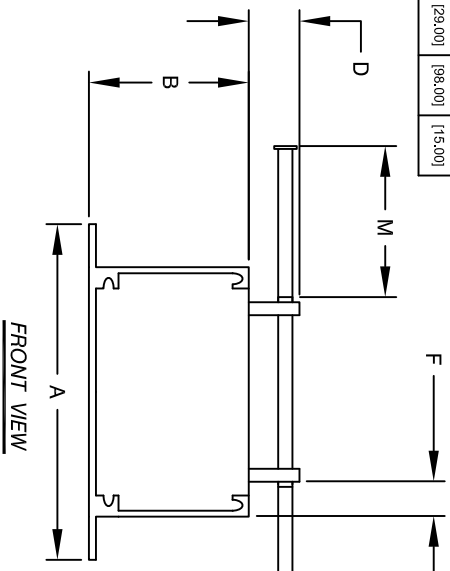
WEIGHT: 1054 GRAM (TYP)
 MAX INDUCTOR TEMP RATING: 200 °C
 RECOMMENDED AMBIENT OPERATING TEMP: -40°C TO 85°C
 HI-POT TEST 1000VDC @ 2mA, 1 MIN, TERMINALS TO CASE
 INTERWINDING CAPACITANCE @ SRF = 15pF (TYP)
 |z| @ SRF=4.7 KILO-OHM (TYP)
 SRF=4.6 MHZ (TYP)
 RATED CURRENT: 90 AMPS WITH HEAT SINK OR AIRFLOW
 DCR = 8 MILLI-OHM MAX.
 L @ DC BIAS: SEE TABLE
 L = 85 uH ± 15% NOM AT 10 KHZ, 0.25V, ZERO DC BIAS

2 SPECIFICATIONS:

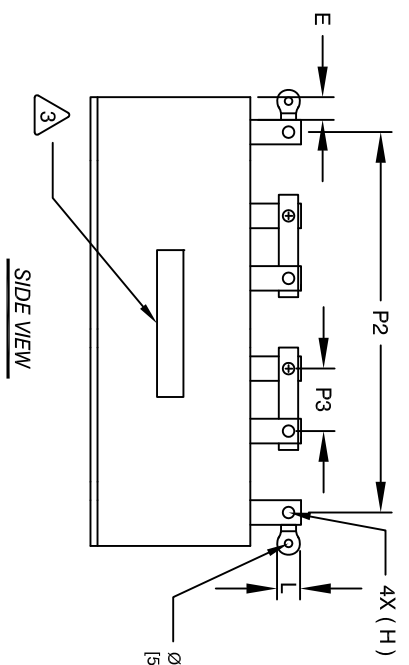
ENCLOSURE: POTTED AND ALUMINUM METAL FRAME
 WIRE: 200°C RATED MAGNET WIRE UL APPROVED
 CORE: POWDER CORE

1 MATERIALS:

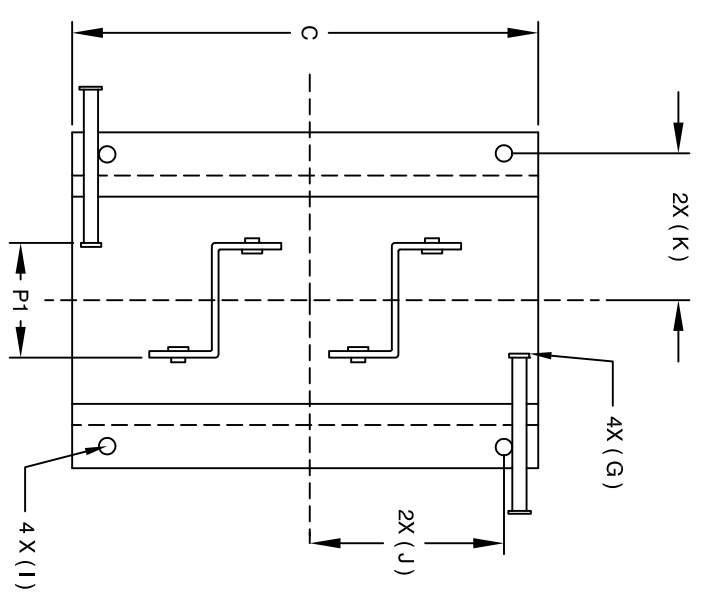
NOTES: UNLESS OTHERWISE SPECIFIED, READ FROM BOTTOM UP.
 CAGE CODE: 5DME2



FRONT VIEW



SIDE VIEW



TOP VIEW

REVISION HISTORY			SIGN & DATE			
REV	ECN	DESCRIPTION	BY	DATE	CHK	DATE
A	151204	PRODUCTION RELEASE	JL	07/13/17	BO	07/13/17

PARTS LIST

UNLESS OTHERWISE SPECIFIED		AUTOCAD		X		www.coilws.com		Coil Winding Specialist, Inc.	
DIMENSIONING AND TOLERANCE PER ANSI Y14.5M	ALL DIMENSIONS ARE IN INCHES AND [MILLIMETERS].	DRAWN	SIGN	DATE	DATE	353 W. GROVE AVE	ORANGE, CA 92665	SCALE	SHEET
TOLERANCE INCHES: .XXX±.010 .XX±.020 .X±.050 .XX±.0254 .XX±.051	ANGLE PROJECTION	JL		07/13/17				NOT_TO_SCALE	1 OF 1
	DO NOT SCALE DRAWING	JM		08/29/17					
		ENGR.	BO	08/29/17					
		APPR.	JLJU	08/29/17					
		TITLE:		SIZE		DWG. NO.		REV	
		High Current Helical Inductor		A		EE70340-313X		A	
		85 uH, 90 Amps, Horizontal		REV				A	