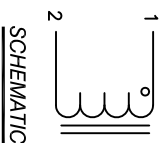
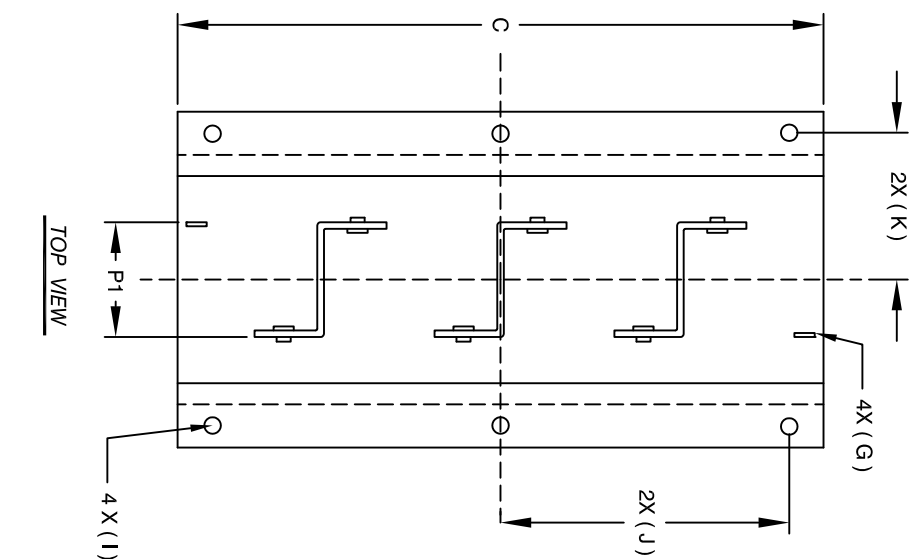
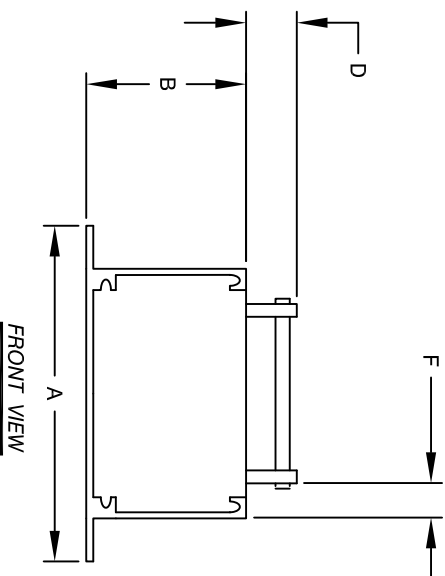
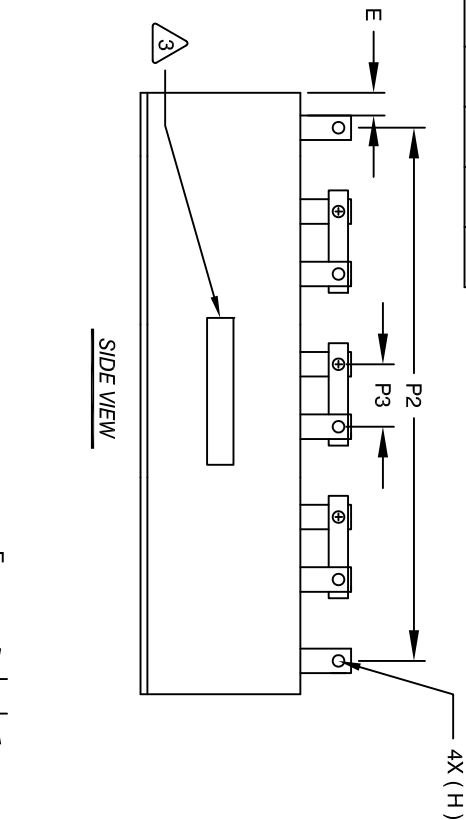


The information contained in this drawing is the sole property of Coil Winding Specialist, Inc. Any reproduction in part or whole without written permission of Coil Winding Specialist, Inc. is prohibited.

DIMENSIONAL TOLERANCES INCHES (MM)

A	B	C	D	E	F	G	H	I	J	K	P1	P2	P3
MAX	MAX	MAX	MAX	MIN	MIN	REF	REF	REF	REF	REF	1.14	5.39	0.59
2.44 [62.00]	1.34 [34.00]	6.42 [163.00]	0.55 [14.00]	0.24 [6.00]	0.24 [6.00]	0.06±0.27 [1.6±0.69]	0.12 [3.05]	0.18 [4.55]	2.97 [75.50]	1.06 [27.00]	29.00 [726.00]	139.80 [3540.00]	15.00 [381.00]

DC-BIAS	L
0A	115 uH
10A	105.5 uH
20A	88.5 uH
30A	73 uH
40A	62 uH
50A	53 uH



SCHEMATIC

- APPLICATION: ENERGY STORAGE FILTER, SWINGING CHOKE.
- BUILT TO ROHS COMPLIANCE.
- LABEL PART NUMBER AND REVISION WHERE SHOWN

WEIGHT: 1426 GRAM (TYP)
 MAX INDUCTOR TEMP RATING: 200 °C
 RECOMMENDED AMBIENT OPERATING TEMP: -40°C TO 85°C
 HI-POT TEST 1000VDC @ 2mA, 1 MIN. TERMINALS TO CASE
 INTERWINDING CAPACITANCE @ SRF = 27pF (TYP)
 |Z| @ SRF = 4.5 KILO-OHM (TYP)
 SRF = 3.3 MHz (TYP)
 RATED CURRENT: 90 AMPS WITH HEAT SINK OR AIRFLOW
 DCR = 8.5 MILLI-OHM MAX.
 L @ DC BIAS: SEE TABLE
 L = 115 uH ± 15% NOM AT 10 KHZ, 0.25V, ZERO DC BIAS

2 SPECIFICATIONS:

ENCLOSURE: POTTED AND ALUMINUM METAL FRAME
 WIRE: 200°C RATED MAGNET WIRE UL APPROVED
 CORE: POWDER CORE

1 MATERIALS:

NOTES: UNLESS OTHERWISE SPECIFIED, READ FROM BOTTOM UP.
 CAGE CODE: 5DME2

REVISION HISTORY		SIGN & DATE	
REV	ECN	DESCRIPTION	
A	151204	PRODUCTION RELEASE	

UNLESS OTHERWISE SPECIFIED		AUTOCAD		PARTS LIST	
DIMENSIONING AND TOLERANCE PER ANSI Y14.5M AND [DIMETERS].		SIGN	DATE	SCALE	NOT_TO_SCALE
TOLERANCE INCHES: .XX±.010 .X±.020 TOLERANCE METERS: .XX±.51 ±.40°30'		JL	07/13/17	SCALE	NOT_TO_SCALE
ANGLE PROJECTION		JM	08/29/17	SCALE	NOT_TO_SCALE
DO NOT SCALE DRAWING		BO	08/29/17	SCALE	NOT_TO_SCALE
		APPR.	JLJU	SCALE	NOT_TO_SCALE
				SCALE	NOT_TO_SCALE

www.coilws.com
 sales@coilws.com
 Coil Winding Specialist, Inc.
 353 W. GROVE AVE
 ORANGE, CA 92665

High Current Helical Inductor
 115 uH, 90 Amps, Horizontal

EE70340-413

REV A