

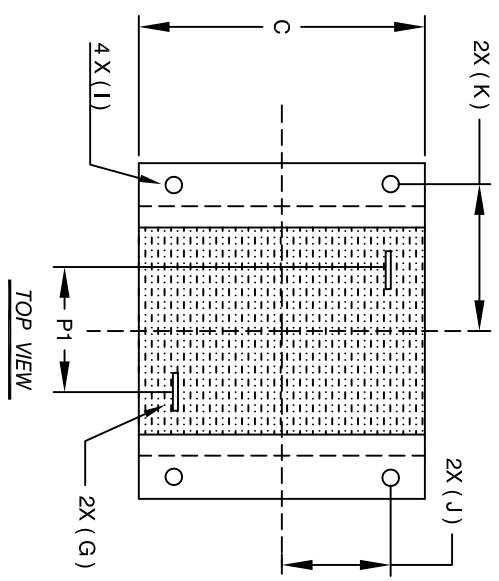
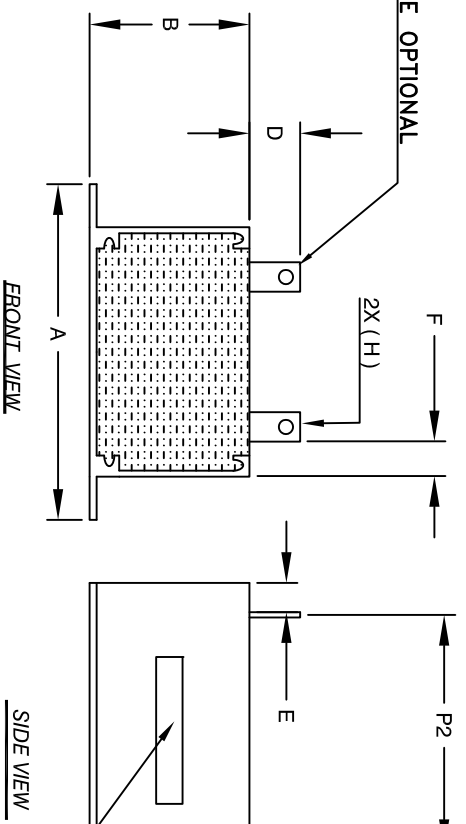
The information contained in this drawing is the sole property of Coil Winding Specialist, Inc. Any reproduction in part or whole without written permission of Coil Winding Specialist, Inc. is prohibited.

REVISION HISTORY

| REV | ECN | DESCRIPTION | BY | DATE | CHK | DATE |
|-----|--------|--------------------|----|----------|-----|----------|
| A | 131030 | PRODUCTION RELEASE | AK | 07/05/16 | BO | 07/05/16 |

DIMENSIONS

| | mm | In |
|----|--------------|----------------|
| A | 85.60±0.51 | 3.37±0.02 |
| B | 40.13±1.27 | 1.58±0.05 |
| C | 61.21±1.27 | 2.41±0.05 |
| D | 11.43 Ref. | 0.45 Ref. |
| E | 13.46 Ref. | 0.53 Ref. |
| F | 11.18 Ref. | 0.44 Ref. |
| G | 0.9X6.0 Ref. | 0.04X0.23 Ref. |
| H | 2.72 Min. | 0.107 Min. |
| I | 4.06 Min. | 0.160 Min. |
| J | 20.50±0.38 | 0.81±0.015 |
| K | 37.00±0.38 | 1.457±0.015 |
| P1 | 29.96 Ref. | 1.14 Ref. |
| P2 | 34.29 Ref. | 1.35 Ref. |



| DC-BIAS | L |
|---------|--------|
| 0A | 222 uH |
| 5A | 221 uH |
| 10A | 218 uH |
| 15A | 211 uH |
| 20A | 201 uH |
| 25A | 182 uH |
| 30A | 171 uH |
| 35A | 157 uH |
| 40A | 139 uH |
| 45A | 126 uH |
| 50A | 112 uH |

PICTURE

| QTY | CODE IDENT | MFG. P/N | DESCRIPTION | ITEM NO. |
|-----|------------|----------|-------------|----------|
| | | | PARTS LIST | |

- 1 MATERIALS:
- 2 SPECIFICATIONS:
- 3 MARK PART NUMBER AND REVISION WHERE SHOWN
- 4 BUILT TO ROHS COMPLIANCE.
- 5 APPLICATION: ENERGY STORAGE FILTER, SWINGING CHOKE

WEIGHT: 510 GRAM (TYP)
 MAX INDUCTOR TEMP RATING: 200°C
 APPROPRIATE AIR FLOW.
 RECOMMENDED AMBIENT OPERATING TEMP: -40°C TO 85°C WITH HI-POT TEST 1000VDC @ 2mA, 1 MIN. TERMINALS TO CASE INTERWINDING CAPACITANCE @ 10KHZ = 17.4pF (TYP)
 |Z|@SRF=5.5 KILO-OHM (TYP)
 SRF=2.5 MHZ (TYP)
 RATED CURRENT: 50 AMPS
 DCR = 10 MILLI-OHM MAX.
 L@DC BIAS: SEE TABLE
 L = 220 uH ± 15% AT 10 KHZ, 0.25V, ZERO DC BIAS

ENCLOSURE: ALUMINUM METAL
 WIRE: 200°C RATED MAGNET WIRE UL APPROVED
 CORE: POWDER CORE

NOTES: UNLESS OTHERWISE SPECIFIED, READ FROM BOTTOM UP.
 CAGE CODE: 5DME2

UNLESS OTHERWISE SPECIFIED
 DIMENSIONING AND TOLERANCE PER ANSI Y14.5M
 ALL DIMENSIONS ARE IN INCHES AND [MILLIMETERS].
 TOLERANCE INCHES: $\phi = \pm 0.30'$
 .XXX-±0.10 .XX-±0.20
 TOLERANCE METRICS: .XXX-±.254 .XX-±.51
 ANGLE PROJECTION

DO NOT SCALE DRAWING

AUTOCAD SOLIDWORKS SIGN DATE X

DRAWN AK 7/29/16
 CHECK JM 7/29/16
 ENGR. JL 7/29/16
 APPR. BO 7/29/16

TITLE: High Current Helical Inductor
 220 uH, 50 Amps, Horizontal

www.coilws.com
 sales@coilws.com
 353 W. GROVE AVE
 ORANGE, CA 92665

Coil Winding Specialist, Inc.

SIZE DIM. NO. A EEK55246-221M-50A
 SCALE NOT_TO_SCALE SHEET 1 OF 1