

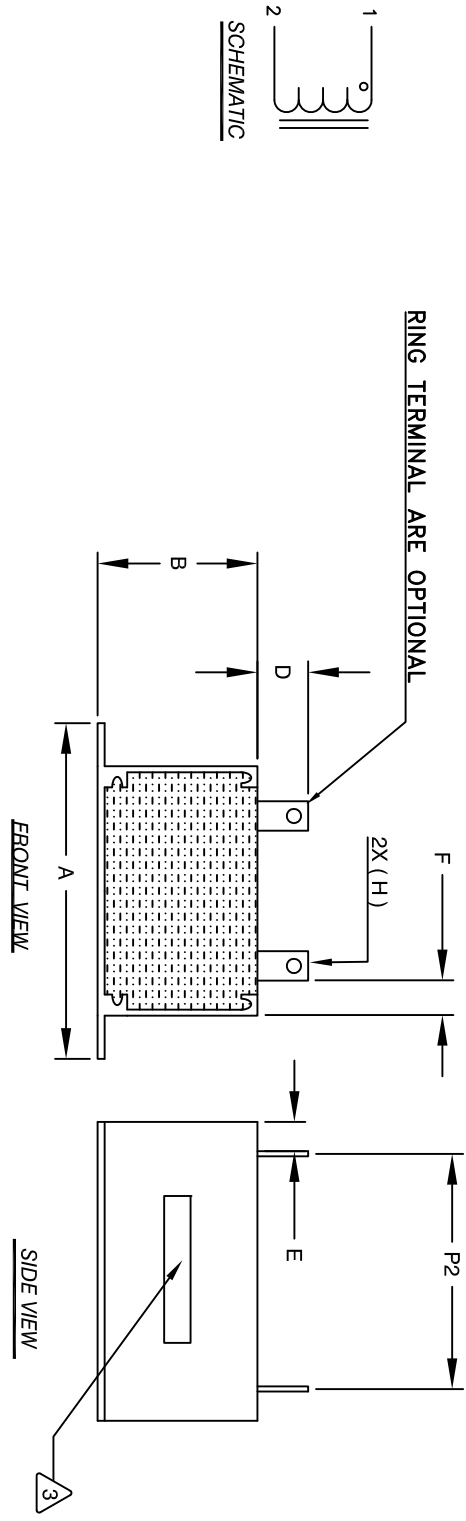
The information contained in this drawing is the sole property of Coil Winding Specialist, Inc. Any reproduction in part or whole without written permission of Coil Winding Specialist, Inc. is prohibited.

REVISION HISTORY

REV	ECN	DESCRIPTION	BY	DATE	CHK	DATE
A	131030	PRODUCTION RELEASE	AK	07/05/16	BO	07/05/16

DIMENSIONS

	mm	In
A	85.60±0.51	3.37±0.02
B	40.13±1.27	1.58±0.05
C	61.21±1.27	2.41±0.05
D	11.43 Ref.	0.45 Ref.
E	13.46 Ref.	0.53 Ref.
F	11.18 Ref.	0.44 Ref.
G	0.7X7.0 Ref.	0.03X0.28 Ref.
H	2.72 Min.	0.107 Min.
I	4.06 Min.	0.160 Min.
J	20.50±0.38	0.81±0.015
K	37.00±0.38	1.457±0.015
P1	29.96 Ref.	1.14 Ref.
P2	34.29 Ref.	1.35 Ref.

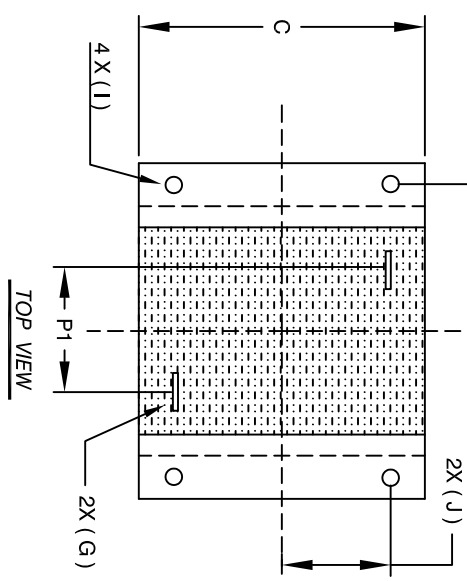


- APPLICATION: ENERGY STORAGE FILTER, SWINGING CHOKE.
- BUILT TO ROHS COMPLIANCE.
- MARK PART NUMBER AND REVISION WHERE SHOWN

WEIGHT: 600 GRAM (TYP)
 MAX INDUCTOR TEMP RATING: 200°C
 APPROPRIATE AIR FLOW.
 RECOMMENDED AMBIENT OPERATING TEMP: -40°C TO 85°C WITH HI-POT TEST 1000VDC @ 2mA, 1 MIN. TERMINALS TO CASE INTERWINDING CAPACITANCE @ 10KHZ = 19.06PF (TYP)
 |Z|@SRF=6.1 KILO-OHM (TYP)
 SRF=2.0 MHZ (TYP)
 RATED CURRENT: 40 AMPS
 DCR = 14.5 MILLI-OHM MAX.
 L@DC BIAS: SEE TABLE
 L = 340 uH ± 15% AT 10 KHZ, 0.25V, ZERO DC BIAS

2 SPECIFICATIONS:
 ENCLOSURE: ALUMINUM METAL
 WIRE: 200°C RATED MAGNET WIRE UL APPROVED
 CORE: POWDER CORE

1 MATERIALS:
 NOTES: UNLESS OTHERWISE SPECIFIED, READ FROM BOTTOM UP.
 CAGE CODE: 5DME2



PICTURE

DC-BIAS	L
0A	331 uH
5A	331 uH
10A	323 uH
15A	307uH
20A	285 uH
25A	254 uH
30A	210 uH
35A	182 uH
40A	162 uH

QTY	CODE IDENT	MFG. P/N	DESCRIPTION	ITEM NO.

AUTOCAD SOLIDWORKS SIGN	DATE	TITLE	SCALE	REV
AK	7/29/16	High Current Helical Inductor	A	A
JM	7/29/16	340 uH, 40 Amps, Horizontal	NOT_TO_SCALE	
JL	7/29/16			
BO	7/29/16			

UNLESS OTHERWISE SPECIFIED	UNLESS OTHERWISE SPECIFIED
DIMENSIONING AND TOLERANCE PER ANSI Y14.5M	DIMENSIONING AND TOLERANCE PER ANSI Y14.5M
ALL DIMENSIONS ARE IN INCHES AND [MILLIMETERS].	ALL DIMENSIONS ARE IN INCHES AND [MILLIMETERS].
TOLERANCE INCHES: .XXX±.010 .XX±.020 .XX±.0254 .XX±.51	TOLERANCE METERS: ±.40°30' ±.40°30'
ANGLE PROJECTION	DO NOT SCALE DRAWING