

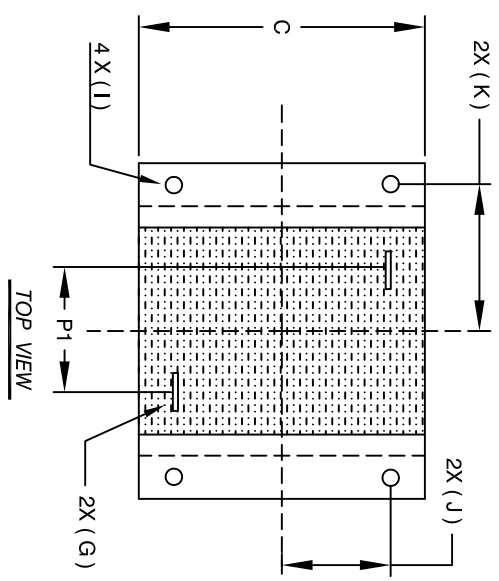
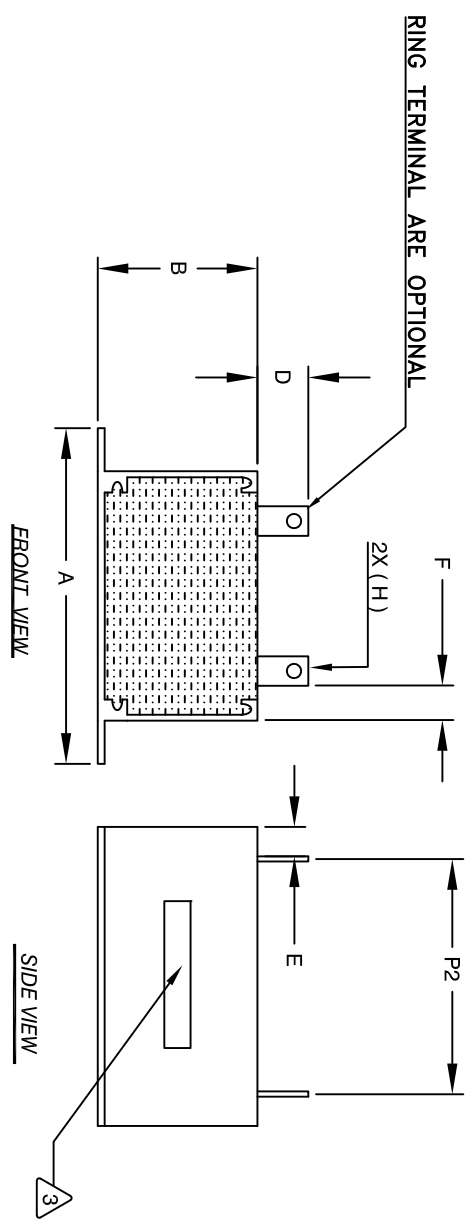
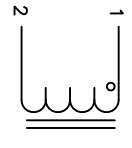
The information contained in this drawing is the sole property of Coil Winding Specialist, Inc. Any reproduction in part or whole without written permission of Coil Winding Specialist, Inc. is prohibited.

REVISION HISTORY

REV	ECN	DESCRIPTION	BY	DATE	CHK	DATE
A	131030	PRODUCTION RELEASE	AK	07/05/16	BO	07/05/16

DIMENSIONS

	mm	In
A	85.60±0.51	3.37±0.02
B	40.13±1.27	1.58±0.05
C	61.21±1.27	2.41±0.05
D	11.43 Ref.	0.45 Ref.
E	13.46 Ref.	0.53 Ref.
F	11.18 Ref.	0.44 Ref.
G	2.5x7.75 Ref.	0.10X0.31 Ref.
H	2.72 Min.	0.107 Min.
I	4.06 Min.	0.160 Min.
J	20.50±0.38	0.81±0.015
K	37.00±0.38	1.457±0.015
P1	29.96 Ref.	1.14 Ref.
P2	34.29 Ref.	1.35 Ref.



DC-BIAS	L
0A	19.1 uH
5A	18.2 uH
10A	17.9 uH
15A	17.6 uH
20A	17.2 uH
25A	16.7 uH
30A	16.4 uH
40A	15.7 uH
50A	14.8 uH
60A	13.9 uH
70A	12.9 uH
80A	12.2 uH
90A	11.5 uH
100A	10.6 uH

- APPLICATION: ENERGY STORAGE FILTER, SWINGING CHOKE
- BUILT TO ROHS COMPLIANCE.
- MARK PART NUMBER AND REVISION WHERE SHOWN

WEIGHT: 442 GRAM (TYP)
 MAX INDUCTOR TEMP RATING: 200°C
 APPROPRIATE AIR FLOW.
 RECOMMENDED AMBIENT OPERATING TEMP: -40°C TO 85°C WITH HI-POT TEST 1000VDC @ 2mA, 1 MIN. TERMINALS TO CASE INTERWINDING CAPACITANCE @ 10KHZ = 19pF (TYP)
 |Z|@SRF=3.1 KILO-OHM (TYP)
 SRF=8.4 MHZ (TYP)
 RATED CURRENT: 160 AMPS
 DCR = 1.0 MILLI-OHM MAX.
 L@DC BIAS: SEE TABLE
 L = 20uH ± 15% AT 10 KHZ, 0.25V, ZERO DC BIAS

- SPECIFICATIONS:
 ENCLOSURE: ALUMINUM METAL
 WIRE: 200°C RATED MAGNET WIRE UL APPROVED
 CORE: POWDER CORE
- MATERIALS:

NOTES: UNLESS OTHERWISE SPECIFIED, READ FROM BOTTOM UP.
 CAGE CODE: 5DME2

QTY	CODE IDENT	MFG. P/N	DESCRIPTION	ITEM NO.
			PARTS LIST	

AUTOCAD SOLIDWORKS SIGN	DATE	TITLE
AK	7/29/16	High Current Helical Inductor
JM	7/29/16	20 uH, 160 Amps, Horizontal
JL	7/29/16	

UNLESS OTHERWISE SPECIFIED	DRAWN	ENGR.	APPR.	SCALE	SIZE	DWG. NO.	REV
DIMENSIONING AND TOLERANCE PER ANSI Y14.5M AND [DIMETERS].	AK	JM	BO	NOT_TO_SCALE	A	EES55204-200M-160A	A
TOLERANCE INCHES: .XXX±.010 .XX±.020 TOLERANCE METRCS: .XXX±.254 .XX±.51							
ANGLE PROJECTION							
DO NOT SCALE DRAWING							