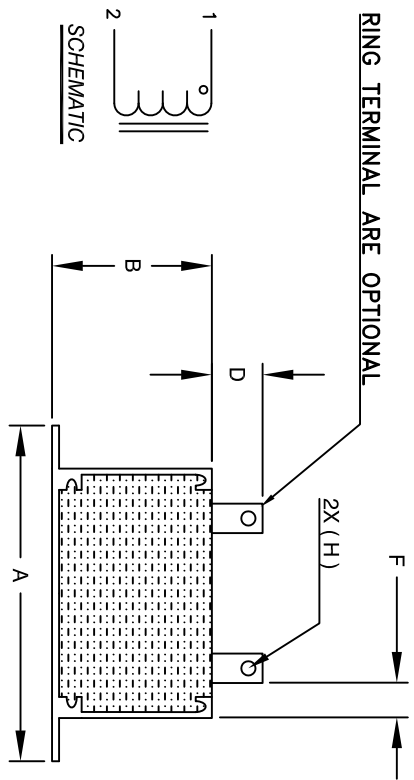


The information contained in this drawing is the sole property of Coil Winding Specialist, Inc. Any reproduction in part or whole without written permission of Coil Winding Specialist, Inc. is prohibited.

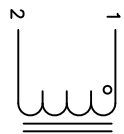
REVISION HISTORY

REV	ECN	DESCRIPTION	BY	DATE	CHK	DATE
A	131030	PRODUCTION RELEASE	AK	07/05/16	BO	07/05/16
B		REVISED MECH. SPEC. ON P1&P2 DIM.	TN	07/30/18	JL	07/30/18
B1		REVISED MECH. SPEC. ON E DIM.	TN	08/24/18	JL	08/24/18

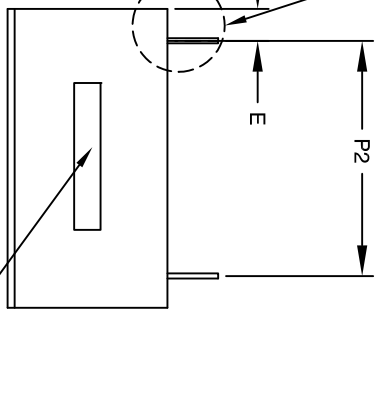
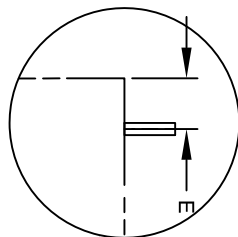
RING TERMINAL ARE OPTIONAL



FRONT VIEW



SCHEMATIC



SIDE VIEW

DIMENSIONS

	mm	In
A	85.60±0.51	3.37±0.02
B	40.13±1.27	1.58±0.05
C	61.21±1.27	2.41±0.05
D	11.43 Ref.	0.45 Ref.
E	13.46 Ref.	0.53 Ref.
F	11.18 Ref.	0.44 Ref.
G	2.6x7.6 Ref.	0.10x0.30 Ref.
H	Φ 2.72 Min.	0.107 Min.
I	4.06 Min.	0.160 Min.
J	20.50±0.51	0.81±0.02
K	37.00±0.51	1.457±0.02
P1	27.60±1.5	1.086±0.059
P2	34.40±1.5	1.354±0.059

FLAT WIRE TO EDGE OF PART

4 DIMENSION E IS MEASURED FROM CENTER OF

5 APPLICATION: ENERGY STORAGE FILTER, SWINGING CHOKE

4 BUILT TO ROHS COMPLIANCE.

3 MARK PART NUMBER AND REVISION WHERE SHOWN

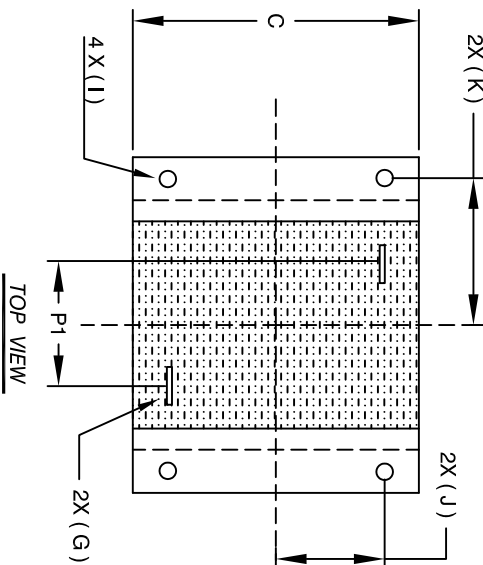
- WEIGHT: 466 GRAM (TYP)
- MAX INDUCTOR TEMP RATING: 200°C
- APPROPRIATE AIR FLOW.
- RECOMMENDED AMBIENT OPERATING TEMP: -40°C TO 85°C WITH HI-POT TEST 1000VDC @ 2mA, 1 MIN. TERMINALS TO CASE INTERWINDING CAPACITANCE @ 10KHZ = 15PF (TYP)
- Iz|@SRF=3.6 KILLO-OHM (TYP)
- SRF=1.1 MHZ (TYP)
- RATED CURRENT: 200 AMPS
- DCR = 1.1 MILLI-OHM MAX.
- L@DC BIAS: SEE TABLE
- L = 14uH ± 15% AT 10 KHZ, 0.25V, ZERO DC BIAS

2 SPECIFICATIONS:

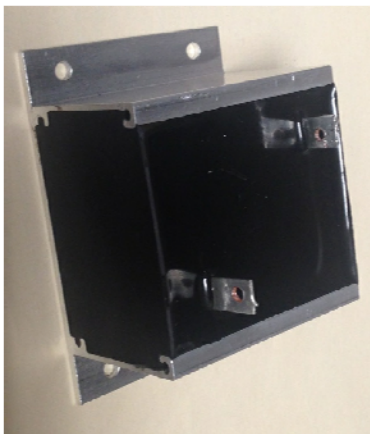
- ENCLOSURE: ALUMINUM METAL
- WIRE: 200°C RATED MAGNET WIRE UL APPROVED
- CORE: POWDER CORE

1 MATERIALS:

NOTES: ALL DIMENSION STATED AS "REF" ARE REFERENCE ONLY WITH ±25% TOLERANCE
 NOTES: UNLESS OTHERWISE SPECIFIED, READ FROM BOTTOM UP.
 CAGE CODE: 5DME2



TOP VIEW



PICTURE

QTY	CODE IDENT	MFG. P/N	DESCRIPTION	ITEM NO.
			PARTS LIST	

UNLESS OTHERWISE SPECIFIED		AUTOCAD		TITLE:	
DIMENSIONING AND TOLERANCE PER ANSI Y14.5M AND [DIMENSIONS]		SIGN	DATE	DATE	www.coilw.com
TOLERANCE INCHES: .XXX±.010 .XX±.020 TOLERANCE METERS: .XXX±.254 .XX±.51		AK	7/29/16	07/05/16	353 W. GROVE AVE
ANGLE PROJECTION		JM	7/29/16	07/30/18	ORANGE, CA 92865
DO NOT SCALE DRAWING		JL	7/29/16	08/24/18	
		BO	7/29/16	08/24/18	

SCALE	SIZE	DWG. NO.	REV
A	A	EES55242-140M-200A	B1