

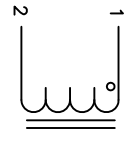
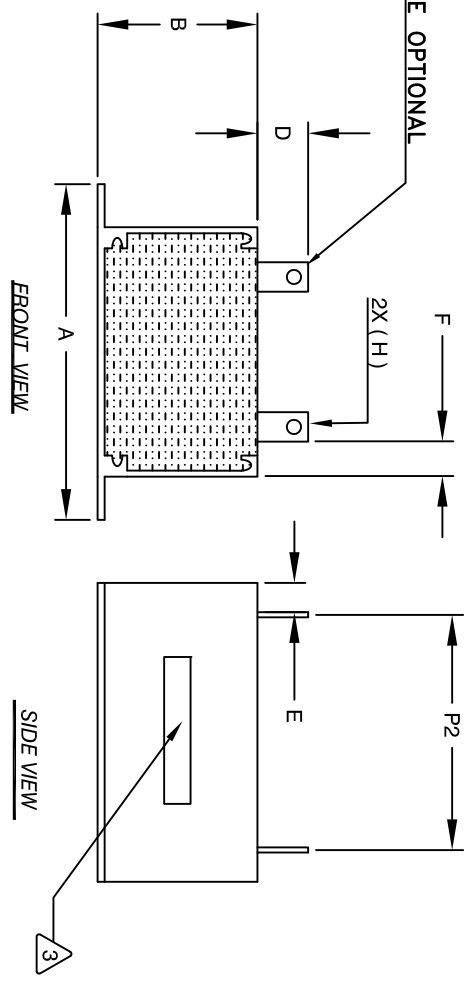
The information contained in this drawing is the sole property of Coil Winding Specialist, Inc. Any reproduction in part or whole without written permission of Coil Winding Specialist, Inc. is prohibited.

REVISION HISTORY

REV	ECN	DESCRIPTION	BY	DATE	CHK	DATE
A	131030	PRODUCTION RELEASE	AK	07/05/16	BO	07/05/16

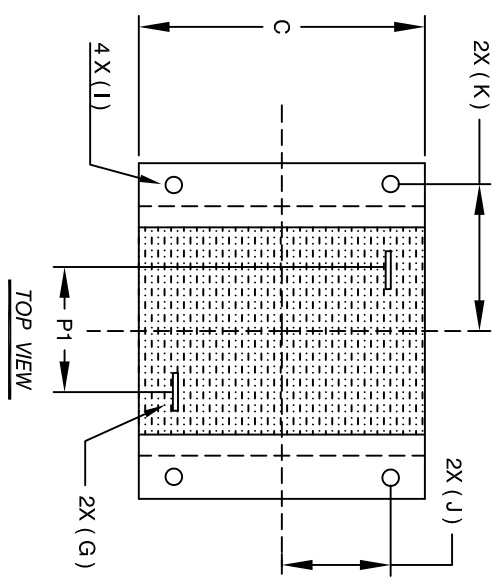
DIMENSIONS

	mm	In
A	85.60±0.51	3.37±0.02
B	40.13±1.27	1.58±0.05
C	61.21±1.27	2.41±0.05
D	11.43 Ref.	0.45 Ref.
E	13.46 Ref.	0.53 Ref.
F	11.18 Ref.	0.44 Ref.
G	2.7x7.7 Ref.	0.11x0.30 Ref.
H	2.72 Min.	0.107 Min.
I	4.06 Min.	0.160 Min.
J	20.50±0.38	0.81±0.015
K	37.00±0.38	1.457±0.015
P1	29.96 Ref.	1.14 Ref.
P2	34.29 Ref.	1.35 Ref.



- 5 APPLICATION: ENERGY STORAGE FILTER, SWINGING CHOKE
- 4 BUILT TO ROHS COMPLIANCE.
- 3 MARK PART NUMBER AND REVISION WHERE SHOWN

WEIGHT: 480 GRAM (TYP)
 MAX INDUCTOR TEMP RATING: 200°C
 APPROPRIATE AIR FLOW.
 RECOMMENDED AMBIENT OPERATING TEMP: -40°C TO 85°C WITH HI-POT TEST 1000VDC @ 2mA, 1 MIN. TERMINALS TO CASE INTERWINDING CAPACITANCE @ 10KHZ = 17pF (TYP)
 |z|@SRF=3.7 KILO-OHM (TYP)
 SRF=8.4 MHZ (TYP)
 RATED CURRENT: 180 AMPS
 DCR = 1.0 MILLI-OHM MAX.
 L@DC BIAS: SEE TABLE
 L = 21uH ± 15% AT 10 KHZ, 0.25V, ZERO DC BIAS



PICTURE

QTY	CODE IDENT	MFG. P/N	DESCRIPTION	ITEM NO.
			PARTS LIST	

- 2 SPECIFICATIONS:
 - ENCLOSURE: ALUMINUM METAL
 - WIRE: 200°C RATED MAGNET WIRE UL APPROVED
 - CORE: POWDER CORE
- 1 MATERIALS:

NOTES: UNLESS OTHERWISE SPECIFIED, READ FROM BOTTOM UP.
 CAGE CODE: 5DME2

UNLESS OTHERWISE SPECIFIED	
DIMENSIONING AND TOLERANCE PER ANSI Y14.5M	ALL DIMENSIONS ARE IN INCHES AND [MILLIMETERS].
TOLERANCE INCHES: .XXX±.010 .XX±.020 .XX±.025	TOLERANCE METRICS: .XX±.51
ANGLE PROJECTION	ANGLE PROJECTION
DO NOT SCALE DRAWING	DO NOT SCALE DRAWING

AUTOCAD SOLIDWORKS SIGN	DATE	TITLE	SCALE	SIZE	DWG. NO.	REV
AK	7/29/16	High Current Helical Inductor	A		EES55244-210M-180A	A
JM	7/29/16	21 uH, 180Amps, Horizontal	NOT_TO_SCALE			
JL	7/29/16					
APPR. BO	7/29/16					

www.coilw.com
 sales@coilw.com
 Coil Winding Specialist, Inc.
 353 W GROVE AVE
 ORANGE, CA 92665