

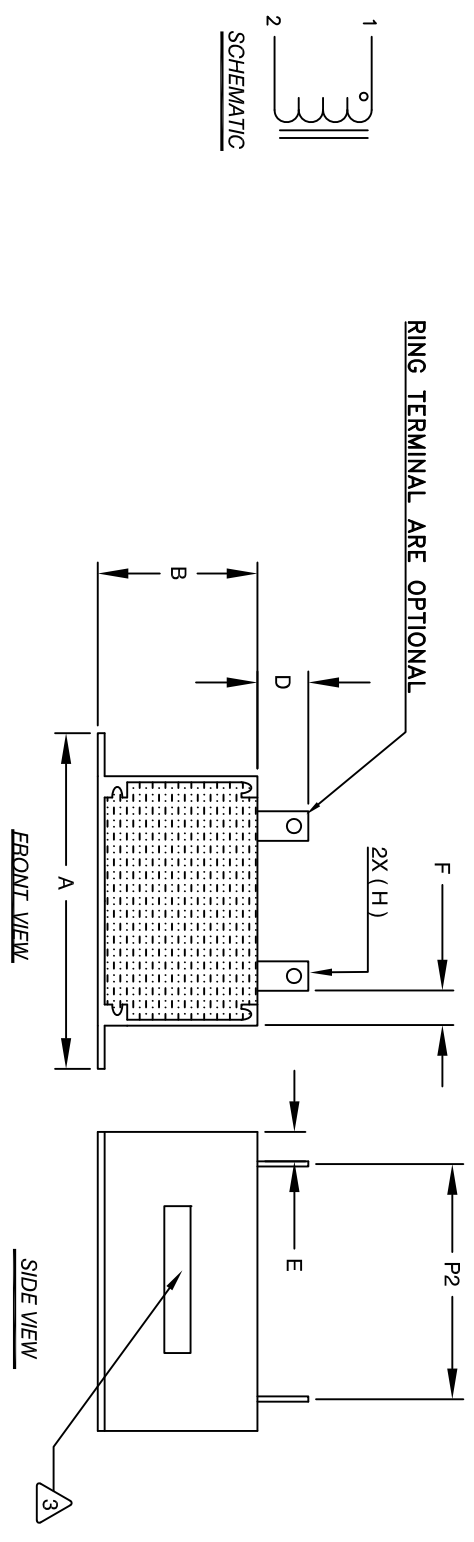
The information contained in this drawing is the sole property of Coil Winding Specialist, Inc. Any reproduction in part or whole without written permission of Coil Winding Specialist, Inc. is prohibited.

REVISION HISTORY

REV	ECN	DESCRIPTION	BY	DATE	CHK	DATE
A	131030	PRODUCTION RELEASE	AK	07/05/16	BO	07/05/16

DIMENSIONS

	mm	In
A	85.60±0.51	3.37±0.02
B	40.13±1.27	1.58±0.05
C	61.21±1.27	2.41±0.05
D	11.43 Ref.	0.45 Ref.
E	13.46 Ref.	0.53 Ref.
F	11.18 Ref.	0.44 Ref.
G	1.3x7.5 Ref.	0.051X0.295 Ref.
H	2.72 Min.	0.107 Min.
I	4.06 Min.	0.160 Min.
J	20.50±0.38	0.81±0.015
K	37.00±0.38	1.457±0.015
P1	29.96 Ref.	1.14 Ref.
P2	34.29 Ref.	1.35 Ref.

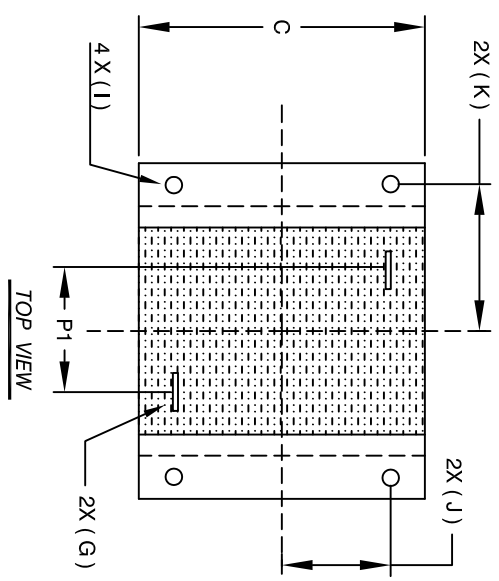


- 5 APPLICATION: ENERGY STORAGE FILTER, SWINGING CHOKE
- 4 BUILT TO ROHS COMPLIANCE.
- 3 MARK PART NUMBER AND REVISION WHERE SHOWN

WEIGHT: 570 GRAM (TYP)
 MAX INDUCTOR TEMP RATING: 200°C
 APPROPRIATE AIR FLOW NEEDED.
 RECOMMENDED AMBIENT OPERATING TEMP: -40°C TO 85°C WITH HI-POT TEST 1000VDC @ 2mA, 1 MIN. TERMINALS TO CASE INTERWINDING CAPACITANCE @ 10KHZ = 17pF (TYP)
 |Z|@SRF=6.6 KIL-OHM (TYP)
 SRF=3.7 MHZ (TYP)
 RATED CURRENT: 60 AMPS
 DCR = 4.0 MILLI-OHM MAX.
 L@DC BIAS: SEE TABLE
 L = 110 uH ± 15% AT 10 KHZ, 0.25V, ZERO DC BIAS

2 SPECIFICATIONS:
 ENCLOSURE: ALUMINUM METAL
 WIRE: 200°C RATED MAGNET WIRE UL APPROVED
 CORE: POWDER CORE

1 MATERIALS:
 NOTES: UNLESS OTHERWISE SPECIFIED, READ FROM BOTTOM UP.
 CAGE CODE: 5DME2



PICTURE

DC-BIAS	L
0A	106 uH
5A	100 uH
10A	94 uH
15A	86 uH
20A	76 uH
25A	67 uH
30A	65 uH
35A	60 uH
40A	55 uH
45A	51 uH
50A	46 uH

QTY	CODE IDENT	MFG. P/N	DESCRIPTION	ITEM NO.
			PARTS LIST	
			High Current Helical Inductor	
			110 uH, 60 Amps, Horizontal	

UNLESS OTHERWISE SPECIFIED	UNLESS OTHERWISE SPECIFIED
DIMENSIONING AND TOLERANCE PER ANSI Y14.5M	DRAWN RL 10/15/13
ALL DIMENSIONS ARE IN INCHES AND [MILLIMETERS].	CHKD JM 10/15/13
TOLERANCE INCHES: .XX±.010 .X±.020	ENGR AK 10/15/13
TOLERANCE METRICS: .XX±.254 .X±.51	APPR BO 10/15/13
ANGLE PROJECTION	SCALE A
DO NOT SCALE DRAWING	SIZE DIM. NO. EESS5246-111M-60A