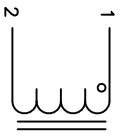
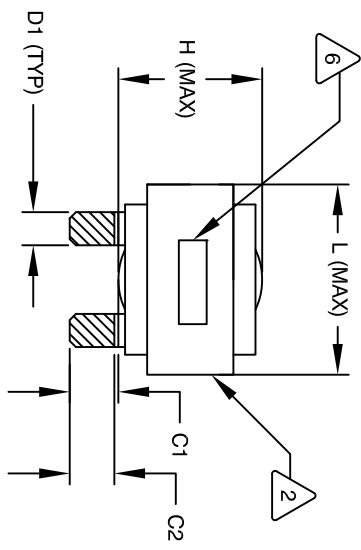


The information contained in this drawing is the sole property of Coil Winding Specialist, Inc. Any reproduction in part or whole without written permission of Coil Winding Specialist, Inc. is prohibited.

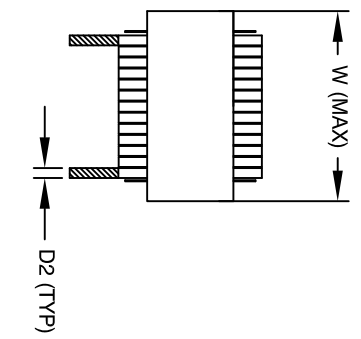


SCHEMATIC

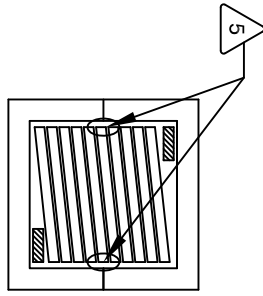
- 1 APPLICATION: ENERGY STORAGE FILTER, SWINGING CHOKE
- 2 BUILT TO ROHS COMPLIANCE AND LEAD FREE
- 3 MARK PART NUMBER, REVISION AND DATE CODE WHERE SHOWN
- 4 VANISH PART AND CURVE
APPLY SILICON WHERE SHOWN
- 5 WRAP TAPE AROUND CORES
WITH CORES AND NOMEX SPACERS
ASSEMBLE PRE FORMED FLAT HELICAL COIL
CONSTRUCTION:
- 6 WEIGHT: 397 GRAM (TYP)
MAX INDUCTOR TEMP RATING: 200°C
INDUCTOR OPERATING TEMP. RANGE: -40°C TO 85°C
HI-POT TEST FOR WINDING TO CORE ISOLATION: 1000VDC @ 2mA, 1 MIN
INTERWINDING CAPACITANCE = 8.10pF (TYP) @ SRF
|Z| = 13.57 KILO-OHM (TYP) @ SRF
SRF = 5.32 MHz (TYP)
INDUCTOR RATED CURRENT: 35 AMPS
DCR = 15.0 MILLI-OHM MAX.
INDUCTOR @ DC BIAS: SEE TABLE ON RIGHT
L = 130 uH ± 15% MEASURED AT 10 KHZ, 0.25V, ZERO DC BIAS
SPECIFICATIONS @ 25°C:



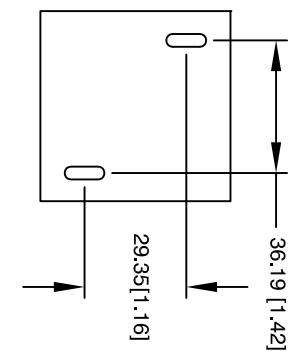
FRONT VIEW



SIDE VIEW



BOTTOM VIEW



MOUNTING HOLES PATTERN

DIMENSIONAL TOLERANCE

	mm	inch
C1	17.80 (TYP)	0.70 (TYP)
C2	13.45 (TYP)	0.53 (TYP)
D1	7.05 (TYP)	0.28 (TYP)
D2	0.80 (TYP)	0.03 (TYP)
L	67.0 MAX	2.64 MAX
W	72.0 MAX	2.83 MAX
H	40.0 MAX	1.57 MAX

INDUCTOR DC BIAS TABLE

DC BIAS	INDUCTANCE (TYP)
0A	129 uH
5A	129 uH
10A	129 uH
15A	129 uH
20A	128 uH
25A	126 uH
30A	118 uH
35A	77 uH
40A	50 uH



VANISH DOLPH or EQUAL
SILICON DOW CORNING OR EQUAL
NOMEX SPACERS FOR SIDE AND CENTER LEG OF CORES
OUTER WRAP: 3M GLASS OR EQUAL
WIRE: UL RECOGNIZED 200°C RATED MAGNET WIRE
CORE: COMPACTED POWDERED CORE

- 1 INSULATION CLASS 200°C REQUIRED MATERIAL: UL RECOGNIZED 94V-0 FOR FLAMMABILITY

NOTES: UNLESS OTHERWISE SPECIFIED, READ FROM BOTTOM UP.

CAGE CODE: SDME2

REVISION HISTORY

REV	ECN	DESCRIPTION	BY	DATE	CHK	DATE
A		PRODUCTION RELEASE	TN	04/06/18	JL	04/06/18

QTY	CODE IDENT	MFG. P/N	DESCRIPTION	ITEM NO.
			High Current Helical Inductor	

UNLESS OTHERWISE SPECIFIED	DRAWN	DATE	TITLE
DIMENSIONING AND TOLERANCE PER ANSI Y14.5M AND DIMENSIONS ARE IN INCHES AND [DIMETERS].	TN	04/06/18	High Current Helical Inductor
TOLERANCE INCHES: .XX=±.010 .X=±.020 TOLERANCE METRCS: .XX=±.254 .X=±.51	JL	04/06/18	130 uH, 40 Amps, Horizontal
ANGLE PROJECTION	APPR	04/06/18	
DO NOT SCALE DRAWING	JL		

AUTOCAD SOLIDWORKS SIGN	DATE	MFG. P/N	DESCRIPTION	ITEM NO.
			High Current Helical Inductor	

PARTS LIST

SCALE	NOT_TO_SCALE	SHEET	1 OF 1
B			