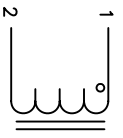


The information contained in this drawing is the sole property of Coil Winding Specialist, Inc. Any reproduction in part or whole without written permission of Coil Winding Specialist, Inc. is prohibited.

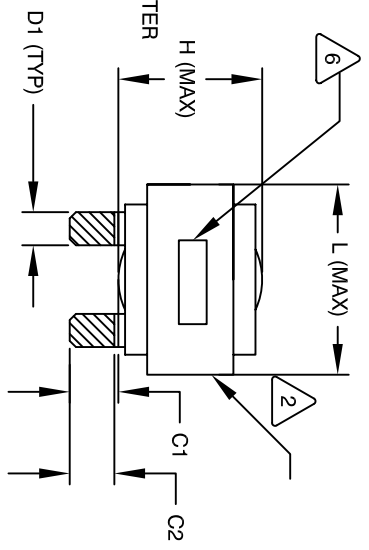
REVISION HISTORY

REV	ECN	DESCRIPTION	BR	DATE	CHK	DATE
A		PRODUCTION RELEASE	ROL	6/22/11	JCL	3/21/11
B		ELECTRICAL SPEC. CHANGE	JK	9/26/12	JLU	9/26/12

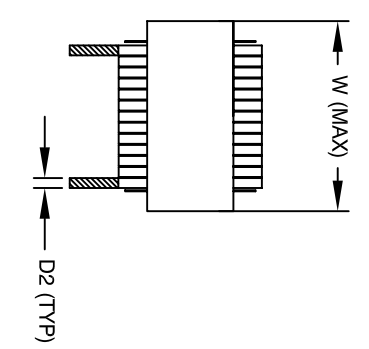


SCHEMATIC

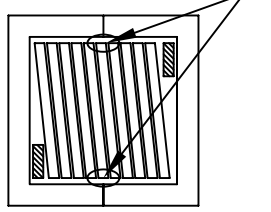
- 1 _____
- 2 _____
- 3 _____
- 4 _____
- 5 _____
- 6 _____



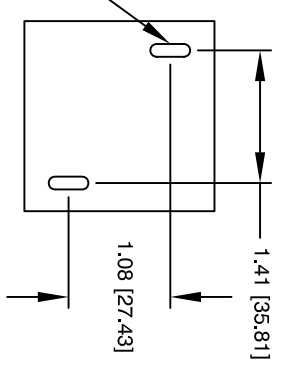
FRONT VIEW



SIDE VIEW



BOTTOM VIEW



MOUNTING HOLES PATTERN

DIMENSIONAL TOLERANCE

	mm	Inch
C1	12.20 ± 1.50	0.48 ± 0.06
C2	11.10 ± 1.00	0.44 ± 0.04
D1	6.0 (TYP)	0.23 (TYP)
D2	0.9 (TYP)	0.04 (TYP)
L	58.0 MAX	2.29 MAX
W	58.0 MAX	2.29 MAX
H	34.0 MAX	1.34 MAX

DC-BIAS	L
0A	221.5uH
5A	222.9uH
10A	218.9uH
15A	211.1uH
20A	201.2uH
25A	182.0uH
30A	171.0uH
35A	157.0uH
40A	139.0uH
45A	126.0uH
50A	112.0uH

- 8 APPLICATION: OUTPUT CHOKE, HIGH DC-BIAS INDUCTOR, INPUT FILTER
- 7 BUILT TO ROHS COMPLIANCE AND LEAD FREE.
- 6 MARK PART NUMBER AND REVISION WHERE SHOWN
- 5 VANISH PART AND CURE
APPLY SILICON WHERE SHOWN
- 4 WRAP TAPE AROUND CORES
WITH CORES AND NOMEX SPACERS
ASSEMBLE PRE FORMED FLAT HELICAL COIL
CONSTRUCTION
WEIGHT: 480.0 GRAM (TYP)
RECOMMENDED OPERATING TEMP: -40°C TO 85°C AT 55 °C AMBIENT
HI-POT TEST FOR WINDING TO CORE ISOLATION. 1000VDC @ 2mA, 1 MIN
INTERWINDING CAPACITANCE @ 10KHZ = 17.38 pF (TYP)
|z|@SRF=5.5 KILO-OHM
SRF=2.5 MHZ
RATED CURRENT: 50 AMPS
DCR = 10.0 MILLIOHM MAX., USING GW INSTEK GOM-801H OR EQUAL
L@DC BIAS: SEE TABLE ON RIGHT.
L = 220uH NOM. ±15%, MEASURED AT 10 KHZ, 0.25V, ZERO DC BIAS
SPECIFICATIONS:

- 3 VANISH DOLPH or EQUAL
SILICON DOW CORNING OR EQUAL
NOMEX SPACERS FOR SIDE AND CENTER LEG OF CORES
OUTER WRAP: 3M GLASS OR EQUAL
WIRE: UL RECOGNIZED 200°C RATED MAGNET WIRE
CORE: COMPACTED POWDERED CORE
- 2 _____

- 1 INSULATION CLASS 200°C REQUIRED
MATERIAL: UL RECOGNIZED 94V-0 FOR FLAMMABILITY

NOTES: UNLESS OTHERWISE SPECIFIED, READ FROM BOTTOM UP.

CAGE CODE: 5DME2

QTY	CODE IDENT	MFG. P/N	DESCRIPTION	ITEM NO.
			PARTS LIST	
			www.coilws.com	
			Coil Winding Specialist, Inc.	
			353 W. GROVE AVE	
			ORANGE, CA 92665	
			TITLE:	
			High Current Helical Inductor	
			220 uH, 50 Amps, Horizontal	
			SCALE:	
			NOT_TO_SCALE	
			SIZE Dwg. NO.:	
			EK55246-221M-50AH	
			SCALE:	
			NOT_TO_SCALE	
			SHEET	
			1 OF 1	