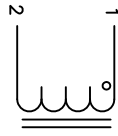


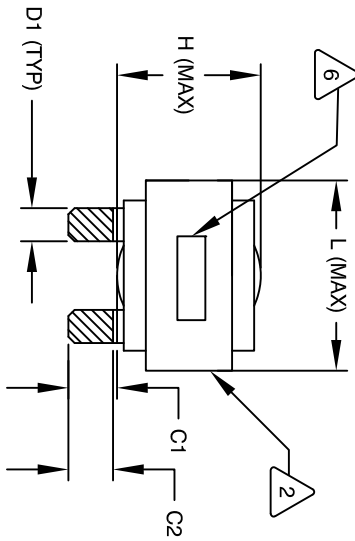
REVISION HISTORY

REV	ECN	DESCRIPTION	BR	DATE	CHK	DATE
A		PRODUCTION RELEASE	RL	2/13/11	JCL	2/13/11

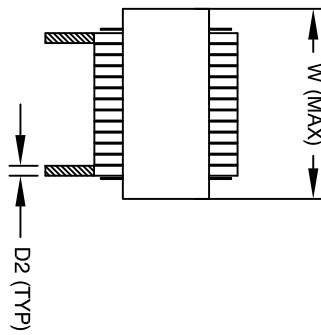
SIGN & DATE	
BR	DATE
CHK	DATE



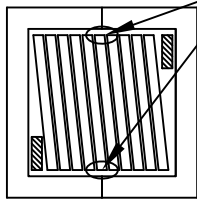
SCHEMATIC



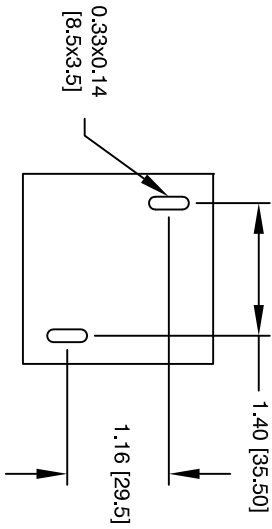
FRONT VIEW



SIDE VIEW



BOTTOM VIEW



MOUNTING HOLES PATTERN

DIMENSIONAL TOLERANCE		
	mm	inch
C1	13.99±1.50	0.55 ± 0.06
C2	12.60±1.00	0.50 ± 0.04
D1	7.75 (TYP)	0.31 (TYP)
D2	2.50(TYP)	0.10 (TYP)
L	57.0 MAX	2.25 MAX
W	58.0 MAX	2.29 MAX
H	36.0 MAX	1.42 MAX

DC-BIAS		L
0A	19.1 uH	
5A	18.2 uH	
10A	17.9 uH	
15A	17.6 uH	
20A	17.2 uH	
25A	16.7 uH	
30A	16.4 uH	
40A	15.7 uH	
50A	14.8 uH	
60A	13.9 uH	
70A	12.9 uH	
80A	12.2 uH	
90A	11.5 uH	
100A	10.6 uH	

3 SPECIFICATIONS:

VANISH DOLPH OR EQUAL
SILICON DOW CORNING OR EQUAL
NOMEX SPACERS FOR SIDE AND CENTER LEG OF CORES
OUTER WRAP: 3M GLASS OR EQUAL
WIRE: UL RECOGNIZED 200°C RATED MAGNET WIRE
CORE: COMPACTED POWDERED CORE

2

INSULATION CLASS 200°C REQUIRED
MATERIAL: UL RECOGNIZED 94V-0 FOR FLAMMABILITY

1

NOTES: UNLESS OTHERWISE SPECIFIED, READ FROM BOTTOM UP.

7 BUILT TO ROHS COMPLIANCE AND LEAD FREE.
6 MARK PART NUMBER AND REVISION WHERE SHOWN
5 VANISH PART AND CURE
APPLY SILICON WHERE SHOWN
WRAP TAPE AROUND CORES
WITH CORES AND NOMEX SPACERS
ASSEMBLE PRE FORMED FLAT HELICAL COIL
CONSTRUCTION
4 WEIGHT: 412 GRAM (TYP)
MAX INDUCTOR TEMP RATING: 200°C
RECOMMENDED OPERATING TEMP: -40°C TO 85°C
H-POT TEST FOR WINDING TO CORE ISOLATION. 1000VDC @ 2mA, 1 MIN
INTERWINDING CAPACITANCE @ 10KHZ = 19PF (TYP)
|z|@SRF=3.1 KILO-OHM (TYP)
SRF=8.4 MHZ (TYP)
RATED CURRENT: 160 AMPS
DCR = 1.0 MILLI-OHM MAX.
L@DC BIAS: SEE TABLE ON RIGHT.
L = 20uH ± 15%. MEASURED AT 10 KHZ, 0.25V, ZERO DC BIAS

UNLESS OTHERWISE SPECIFIED	
DIMENSIONING AND TOLERANCE PER ANSI Y14.5M	
ALL DIMENSIONS ARE IN INCHES AND [MILLIMETERS].	
TOLERANCE INCHES:	∠=±0.30°
.XXX-4.010 .X±.020	∠=±0.30°
.XXX-4.254 .XX±.51	
TOLERANCE METRICS:	
ANGLE PROJECTION	↗
DO NOT SCALE DRAWING	

QTY	CODE IDENT	MFG. P/N	DESCRIPTION	ITEM NO.
			PARTS LIST	
	AUTOCAD SOLIDWORKS SIGN	X		
DATE	DATE			
2/11/11	2/11/11			
2/11/11	2/11/11			
2/11/11	2/11/11			
2/11/11	2/11/11			
TITLE:		High Current Helical Inductor		
SIZE DWG. NO.:		20 uH, 160 Amps, Horizontal		
SCALE:		NOT_TO_SCALE		
APPR.:		JLJU		
DATE:		2/11/11		
SCALE:		NOT_TO_SCALE		
SHEET:		1 OF 1		

www.coilw.com
sales@coilw.com
Coil Winding Specialist, Inc.
353 W. GROVE AVE
ORANGE, CA 92665