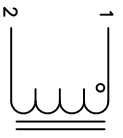


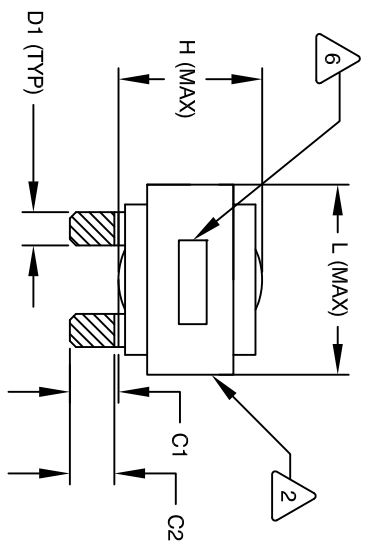
The information contained in this drawing is the sole property of Coil Winding Specialist, Inc. Any reproduction in part or whole without written permission of Coil Winding Specialist, Inc. is prohibited.

REVISION HISTORY

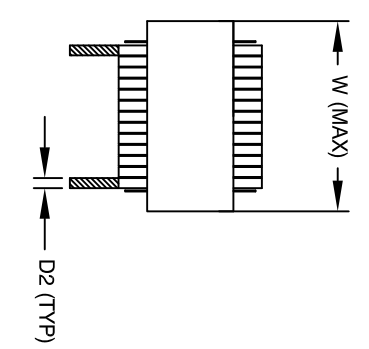
REV	ECN	DESCRIPTION	BY	DATE	CHK	DATE
A		PRODUCTION RELEASE	RL	3/21/11	JCL	3/21/11



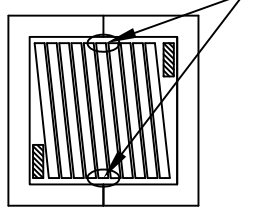
SCHEMATIC



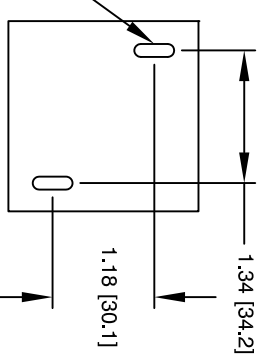
FRONT VIEW



SIDE VIEW



BOTTOM VIEW



MOUNTING HOLES PATTERN

**DIMENSIONAL TOLERANCE**

	mm	inch
C1	14.23±1.50	0.56 ± 0.06
C2	12.12±1.00	0.48 ± 0.04
D1	7.50 (TYP)	0.30 (TYP)
D2	1.50 (TYP)	0.06 (TYP)
L	58.0 MAX	2.29 MAX
W	58.0 MAX	2.29 MAX
H	36.0 MAX	1.42 MAX

DC-BIAS	L
0A	86 uH
5A	83 uH
10A	78 uH
15A	72 uH
20A	65 uH
25A	59 uH
30A	56 uH
35A	53 uH
40A	49 uH
45A	45 uH
50A	41 uH
55A	38 uH

- BUILT TO ROHS COMPLIANCE AND LEAD FREE.
- MARK PART NUMBER AND REVISION WHERE SHOWN
- VANISH PART AND CURE  
APPLY SILICON WHERE SHOWN
- WRAP TAPE AROUND CORES  
WITH CORES AND NOMEX SPACERS  
ASSEMBLE PRE FORMED FLAT HELICAL COIL  
CONSTRUCTION  
WEIGHT: 415 GRAM (TYP)  
MAX INDUCTOR TEMP RATING: 200°C  
RECOMMENDED OPERATING TEMP: -40°C TO 85°C  
HI-POT TEST FOR WINDING TO CORE ISOLATION. 1000VDC @ 2mA, 1 MIN  
INTERWINDING CAPACITANCE @ 10KHZ = 19PF (TYP)  
|z|@SRF=5.5 KILO-OHM (TYP)  
SRF=3.8 MHz (TYP)  
RATED CURRENT: 75 AMPS  
DCR = 3.0 MILLI-OHM MAX.  
L@DC BIAS: SEE TABLE ON RIGHT.  
L = 80 uH ± 15%, MEASURED AT 10 KHZ, 0.25V, ZERO DC BIAS  
SPECIFICATIONS:

- VANISH DOLPH OR EQUAL  
SILICON DOW CORNING OR EQUAL  
NOMEX SPACERS FOR SIDE AND CENTER LEG OF CORES  
OUTER WRAP: 3M GLASS OR EQUAL  
WIRE: UL RECOGNIZED 200°C RATED MAGNET WIRE  
CORE: COMPACTED POWDERED CORE

- INSULATION CLASS 200°C REQUIRED  
MATERIAL: UL RECOGNIZED 94V-0 FOR FLAMMABILITY

NOTES: UNLESS OTHERWISE SPECIFIED, READ FROM BOTTOM UP.

QTY	CODE IDENT	MFG. P/N	DESCRIPTION	ITEM NO.
			<b>PARTS LIST</b>	
			www.coilw.com sales@coilw.com	
			Coil Winding Specialist, Inc. 353 W. GROVE AVE ORANGE, CA 92665	
			<b>TITLE:</b> High Current Helical Inductor 80 uH, 75 Amps, Horizontal	
			<b>SCALE:</b> NOT TO SCALE	
			<b>SIZE Dwg. NO.:</b> ESS55206-800M-75AH	
			<b>SCALE:</b> NOT TO SCALE	
			<b>SHEET 1 OF 1</b>	

UNLESS OTHERWISE SPECIFIED  
DIMENSIONING AND TOLERANCE PER ANSI Y14.5M  
ALL DIMENSIONS ARE IN INCHES AND [MILLIMETERS].  
TOLERANCE INCHES:  $\phi = \pm 0.30'$   
 $\times .xxx = \pm 0.10$   $\times .x = \pm 0.20$   
TOLERANCE METRCS:  $\phi = \pm 0.30'$   
 $\times .xxx = \pm .254$   $\times .x = \pm .51$   
ANGLE PROJECTION   
DO NOT SCALE DRAWING