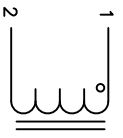


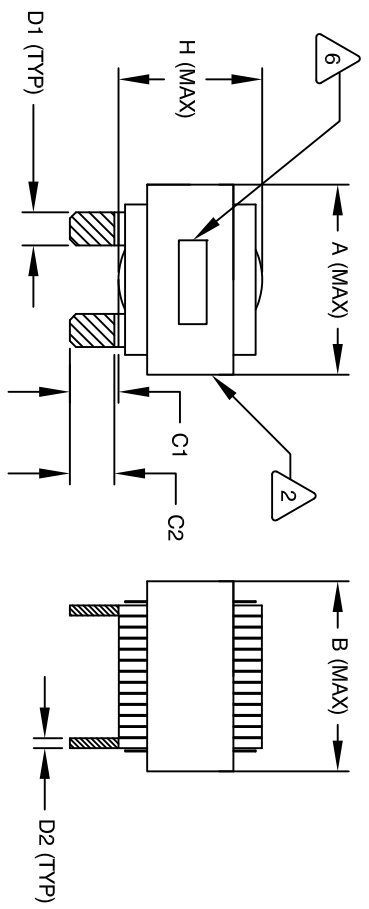
The information contained in this drawing is the sole property of Coil Winding Specialist, Inc. Any reproduction in part or whole without written permission of Coil Winding Specialist, Inc. is prohibited.

REVISION HISTORY

REV	ECN	DESCRIPTION	BY	DATE	CHK	DATE
A		PRODUCTION RELEASE	RM	8/23/12	JLW	8/23/12
B		REVISED DIMENSIONAL TOLERANCE	IN	08/08/18	JL	08/08/18



SCHEMATIC

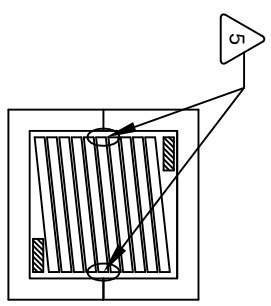


DIMENSIONAL TOLERANCE

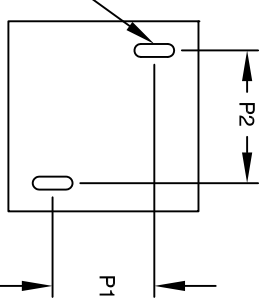
	mm	inch
C1	13±1.50	0.51±0.06
C2	12±1.50	0.47±0.06
D1	7.60 (TYP)	0.30 (TYP)
D2	2.60 (TYP)	0.10 (TYP)
A	57.0 MAX	2.24 MAX
B	57.0 MAX	2.24 MAX
H	37.0 MAX	1.46 MAX
P1	27.60 TYP	1.09 TYP
P2	34.40 TYP	1.35 TYP

DC-BIAS L

0A	14 uH
5A	14 uH
10A	14 uH
15A	14 uH
20A	13.8 uH
25A	13.7 uH
30A	13.2 uH
40A	12.7 uH
50A	12.3 uH
60A	11.9 uH
80A	10.9 uH
100A	10.3 uH
120A	10.1 uH
160A	10.0 uH
200A	9.9 uH



BOTTOM VIEW



MOUNTING HOLES PATTERN

0.33x0.14
[8.5x3.5]

- 7 BUILT TO ROHS COMPLIANCE AND LEAD FREE.
- 6 MARK PART NUMBER AND REVISION WHERE SHOWN
- 5 VANISH PART AND CURE
APPLY SILICON WHERE SHOWN
- 4 WRAP TAPE AROUND CORES
WITH CORES AND NOMEX SPACERS
ASSEMBLE PRE FORMED FLAT HELICAL COIL
CONSTRUCTION
WEIGHT: 436 GRAM (TYP)
MAX INDUCTOR TEMP RATING: 200°C
RECOMMENDED OPERATING TEMP: -40°C TO 85°C
HI-POT TEST FOR WINDING TO CORE ISOLATION, 1000VDC @ 2mA, 1 MIN
INTERWINDING CAPACITANCE @ 10KHZ = 15pF (TYP)
|z|@SRF = 3.6 KILLO-OHM (TYP)
SRF = 11 MHZ (TYP)
RATED CURRENT: 200 AMPS
DCR = 1.1 MILLI-OHM MAX.
L@DC BIAS: SEE TABLE ON RIGHT.
L = 14uH ± 15%, MEASURED AT 10 KHZ, 0.25V, ZERO DC BIAS
SPECIFICATIONS:

- 3 VANISH DOLPH OR EQUAL
SILICON DOW CORNING OR EQUAL
NOMEX SPACERS FOR SIDE AND CENTER LEG OF CORES
OUTER WRAP: 3M GLASS OR EQUAL
WIRE: UL RECOGNIZED 200°C RATED MAGNET WIRE
CORE: COMPACTED POWDERED CORE
- 2 INSULATION CLASS 200°C REQUIRED
MATERIAL: UL RECOGNIZED 94V-0 FOR FLAMMABILITY

NOTES: UNLESS OTHERWISE SPECIFIED, READ FROM BOTTOM UP.

QTY	CODE IDENT	MFG. P/N	DESCRIPTION	ITEM NO.
			PARTS LIST	
	AUTOCAD SOLIDWORKS SIGN	X		
	DATE	DATE		
	8/23/12	8/23/12		
	GN	GN		
	8/23/12	8/23/12		
	ENGR. JLW	ENGR. JLW		
	8/23/12	8/23/12		
	APPR. JLW	APPR. JLW		
	8/23/12	8/23/12		
	SCALE	SCALE		
	NOT_TO_SCALE	NOT_TO_SCALE		
	SHEET 1 OF 1	SHEET 1 OF 1		

TITLE:
High Current Helical Inductor
14 uH, 200 Amps, Horizontal

www.coilws.com
sales@coilws.com
353 W. GROVE AVE
ORANGE, CA 92665

Coil Winding Specialist, Inc.
353 W. GROVE AVE
ORANGE, CA 92665

UNLESS OTHERWISE SPECIFIED
DIMENSIONING AND TOLERANCE PER ANSI Y14.5M
ALL DIMENSIONS ARE IN INCHES
AND [MILLIMETERS].
TOLERANCE INCHES: $\phi = \pm 0.30'$
 $\text{XXX} = \pm 0.10$ $\text{XX} = \pm 0.20$
TOLERANCE METRICS: $\phi = \pm 0.30'$
 $\text{XXX} = \pm 0.254$ $\text{XX} = \pm 0.51$
ANGLE PROJECTION $\phi = \pm 0.30'$
DO NOT SCALE DRAWING