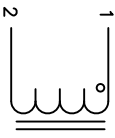
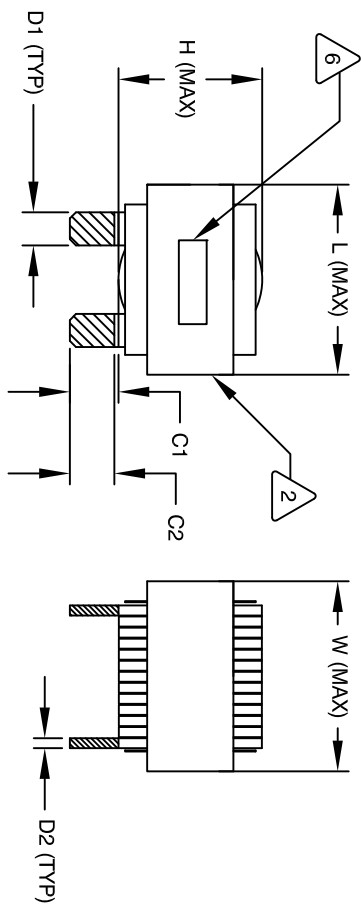


REVISION HISTORY

REV	ECN	DESCRIPTION	SIGN & DATE			
A		PRODUCTION RELEASE	BY	DATE	CHK	DATE
A1		DCR CHANGE	RL	2/13/11	JCL	2/13/11
			JK	6/12/12	HL	6/12/12



SCHEMATIC



DIMENSIONAL TOLERANCE

	mm	inch
C1	14.23±1.50	0.56 ± 0.06
C2	12.12±1.00	0.48 ± 0.04
D1	7.70 (TYP)	0.30 (TYP)
D2	2.70 (TYP)	0.11 (TYP)
L	58.0 MAX	2.29 MAX
W	58.0 MAX	2.29 MAX
H	36.0 MAX	1.42 MAX

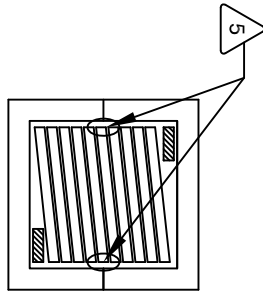
7 BUILT TO ROHS COMPLIANCE AND LEAD FREE.

6 MARK PART NUMBER AND REVISION WHERE SHOWN

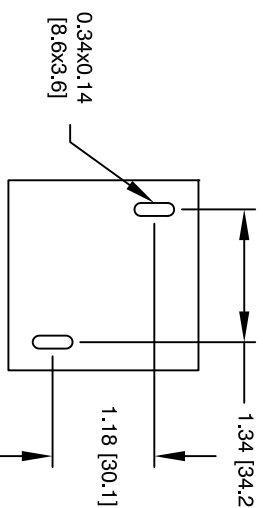
5 VANISH PART AND CURE
APPLY SILICON WHERE SHOWN

4 WRAP TAPE AROUND CORES
WITH CORES AND NOMEX SPACERS
ASSEMBLE PRE FORMED FLAT HELICAL COIL
CONSTRUCTION

WEIGHT: 450 GRAM (TYP)
MAX INDUCTOR TEMP RATING: 200°C
RECOMMENDED OPERATING TEMP: -40°C TO 85°C
HIPOT TEST FOR WINDING TO CORE ISOLATION, 1000VDC @ 2mA, 1 MIN
INTERWINDING CAPACITANCE @ 10KHZ = 17pF (TYP)
|Z|@SRF=3.7 KIL-OHM (TYP)
SRF=8.4 MHZ (TYP)
RATED CURRENT: 180 AMPS
DCR = 1.00 MILLIOHM MAX.
L@DC BIAS: SEE TABLE ON RIGHT.
L = 21uH ± 15%, MEASURED AT 10 KHZ, 0.25V, ZERO DC BIAS
SPECIFICATIONS:



BOTTOM VIEW



MOUNTING HOLES PATTERN

DC-BIAS	L
0A	20.8 uH
5A	20.6 uH
10A	20.3 uH
15A	20.0 uH
20A	19.7 uH
25A	19.3 uH
30A	19.0 uH
40A	18.3 uH
50A	17.4 uH
60A	16.3 uH
70A	15.2 uH
80A	14.3 uH
90A	14.0 uH
100A	13.5 uH

3 VANISH DOLPH OR EQUAL
SILICON DOW CORNING OR EQUAL
NOMEX SPACERS FOR SIDE AND CENTER LEG OF CORES
OUTER WRAP: 3M GLASS OR EQUAL
WIRE: UL RECOGNIZED 200°C RATED MAGNET WIRE
CORE: COMPACTED POWDERED CORE

2 INSULATION CLASS 200°C REQUIRED
MATERIAL: UL RECOGNIZED 94V-0 FOR FLAMMABILITY

NOTES: UNLESS OTHERWISE SPECIFIED, READ FROM BOTTOM UP.

QTY	CODE IDENT	MFG. P/N	DESCRIPTION	ITEM NO.
			PARTS LIST	
	AUTOCAD SOLIDWORKS			
	UNLESS OTHERWISE SPECIFIED			
	DRAWN	DATE	TITLE:	
	RL	2/11/11	High Current Helical Inductor	
	ENGR	2/11/11	21 uH, 180 Amps, Horizontal	
	APPR	2/11/11	SIZE	DRW. NO.
	JLJU	2/11/11	B	ES55244-210M-180AH
			SCALE	REV
			NOT_TO_SCALE	A1
				SHEET 1 OF 1

DIMENSIONING AND TOLERANCE PER ANSI Y14.5M AND [DIMETERS].
TOLERANCE INCHES: ϕ = ±0.30
 \times XXX = ±0.10 \times X = ±0.20
TOLERANCE METRCS: ϕ = ±0.30
 \times XXX = ±.254 \times X = ±.51

www.coilw.com
sales@coilw.com
Coil Winding Specialist, Inc.
353 W. GROVE AVE
ORANGE, CA 92665