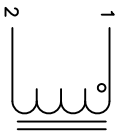
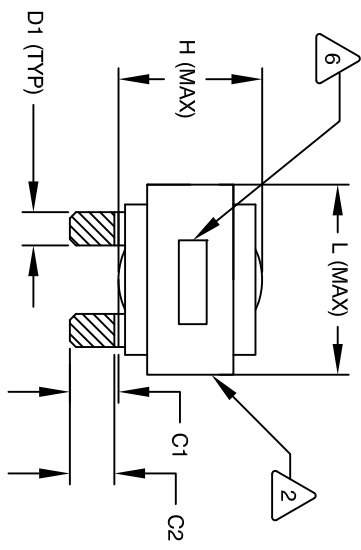


The information contained in this drawing is the sole property of Coil Winding Specialist, Inc. Any reproduction in part or whole without written permission of Coil Winding Specialist, Inc. is prohibited.

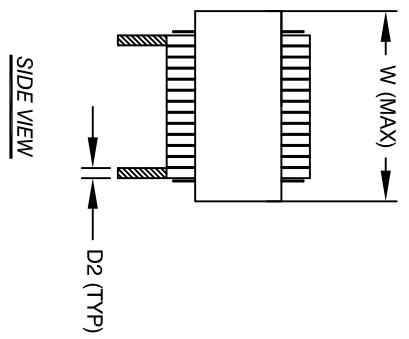


SCHEMATIC

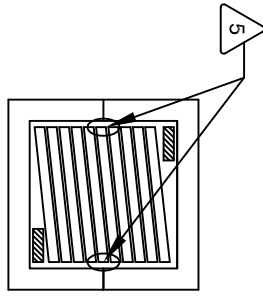
- 1 APPLICATION: ENERGY STORAGE FILTER, SWINGING CHOKE
- 2 BUILT TO ROHS COMPLIANCE AND LEAD FREE
- 3 MARK PART NUMBER, REVISION AND DATE CODE WHERE SHOWN
- 4 VANISH PART AND CURVE
- 5 APPLY SILICON WHERE SHOWN
- 6 WRAP TAPE AROUND CORES WITH CORES AND NOMEX SPACERS ASSEMBLE PRE FORMED FLAT HELICAL COIL CONSTRUCTION:



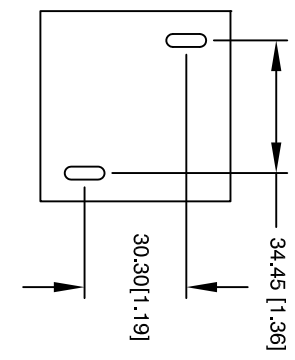
FRONT VIEW



SIDE VIEW



BOTTOM VIEW



MOUNTING HOLES PATTERN

DIMENSIONAL TOLERANCE

	mm	inch
C1	17.63 (TYP)	0.69 (TYP)
C2	13.05 (TYP)	0.51 (TYP)
D1	7.05 (TYP)	0.28 (TYP)
D2	0.80 (TYP)	0.03 (TYP)
L	58.0 MAX	2.28 MAX
W	58.0 MAX	2.28 MAX
H	36.0 MAX	1.42 MAX

INDUCTOR DC BIAS TABLE

DC BIAS	INDUCTANCE (TYP)
0A	163 uH
5A	160 uH
10A	155 uH
15A	149 uH
20A	142 uH
25A	133 uH
30A	122 uH
35A	110 uH
40A	100 uH

WEIGHT: 431 GRAM (TYP)  
 MAX INDUCTOR TEMP RATING: 200°C  
 INDUCTOR OPERATING TEMP. RANGE: -40°C TO 85°C  
 HI-POT TEST FOR WINDING TO CORE ISOLATION: 1000VDC @ 2mA, 1 MIN  
 INTERWINDING CAPACITANCE = 8.58pF (TYP) @ SRF  
 |Z| = 3.53 KIL-OHM (TYP) @ SRF  
 SRF = 4.32 MHz (TYP)  
 INDUCTOR RATED CURRENT: 40 AMPS  
 DCR = 15.0 MILLI-OHM MAX.  
 INDUCTOR @ DC BIAS: SEE TABLE ON RIGHT  
 L = 160 uH ± 15% MEASURED AT 10 KHZ, 0.25V, ZERO DC BIAS  
 SPECIFICATIONS @ 25°C:

1 VANISH DOLPH or EQUAL  
 SILICON DOW CORNING OR EQUAL  
 NOMEX SPACERS FOR SIDE AND CENTER LEG OF CORES  
 OUTER WRAP: 3M GLASS OR EQUAL  
 WIRE: UL RECOGNIZED 200°C RATED MAGNET WIRE  
 CORE: COMPACTED POWDERED CORE

2 INSULATION CLASS 200°C REQUIRED  
 MATERIAL: UL RECOGNIZED 94V-0 FOR FLAMMABILITY

NOTES: UNLESS OTHERWISE SPECIFIED, READ FROM BOTTOM UP.  
 CAGE CODE: SDME2

REVISION HISTORY		SIGN & DATE	
REV	ECN	DESCRIPTION	DATE
A		PRODUCTION RELEASE	04/06/18

QTY	CODE IDENT	MFG. P/N	DESCRIPTION	ITEM NO.
			High Current Helical Inductor	

PARTS LIST		www.coilw.com		Coil Winding Specialist, Inc.	
DRAWN	DATE	353 W. GROVE AVE	ORANGE, CA	92665	
TN	04/06/18				
JL	04/06/18				
JM	04/06/18				
JL	04/06/18				

UNLESS OTHERWISE SPECIFIED	DIMENSIONING AND TOLERANCE PER ANSI Y14.5M AND [DIMETERS].
	TOLERANCE INCHES: $\phi$ = ±0.30
	XXX±.010 .XX±.020
	TOLERANCE METRCS: $\phi$ = ±0.30
	XXX±.254 .XX±.51
	ANGLE PROJECTION
	DO NOT SCALE DRAWING