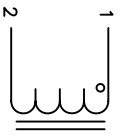


The information contained in this drawing is the sole property of Coil Winding Specialist, Inc. Any reproduction in part or whole without written permission of Coil Winding Specialist, Inc. is prohibited.



1
2
SCHEMATIC

- 8 APPLICATION: ENERGY STORAGE FILTER, SWINGING CHOKE
- 7 BUILT TO ROHS COMPLIANCE AND LEAD FREE.

- 6 MARK PART NUMBER AND REVISION WHERE SHOWN
- 5 VANISH PART AND CURE
- APPLY SILICON WHERE SHOWN

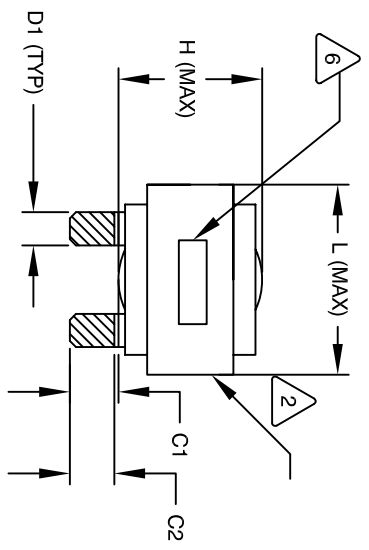
- 4 WRAP TAPE AROUND CORES WITH CORES AND NOMEX SPACERS ASSEMBLE PRE FORMED FLAT HELICAL COIL CONSTRUCTION
- WEIGHT: 440 GRAM (TYP)
- RECOMMENDED OPERATING TEMP: -40°C TO 85°C AT 55 °C AMBIENT HI-POT TEST FOR WINDING TO CORE ISOLATION. 1000VDC @ 2mA, 1 MIN INTERWINDING CAPACITANCE @ 10KHZ = 21 pF (TYP)
- |z|@SRF=6.5 KLO-OHM
- SRF=2.7 MHZ
- RATED CURRENT: 40 AMPS
- DCR= 6.9 MILLIOHM MAX, USING GW INSTEK GOM-801H OR EQUAL L@DC BIAS: SEE TABLE ON RIGHT.
- L= 170 uH ± 15%, MEASURED AT 10 KHZ, 0.25V, ZERO DC BIAS
- 3 SPECIFICATIONS:

- 2 VANISH DOLPH or EQUAL SILICON DOW CORNING OR EQUAL NOMEX SPACERS FOR SIDE AND CENTER LEG OF CORES OUTER WRAP: 3M GLASS OR EQUAL WIRE: UL RECOGNIZED 200°C RATED MAGNET WIRE CORE: COMPACTED POWDERED CORE

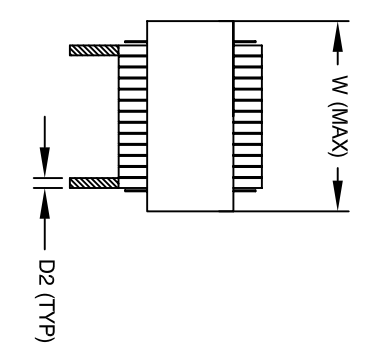
1 INSULATION CLASS 200°C REQUIRED MATERIAL: UL RECOGNIZED 94V-0 FOR FLAMMABILITY

NOTES: UNLESS OTHERWISE SPECIFIED, READ FROM BOTTOM UP.

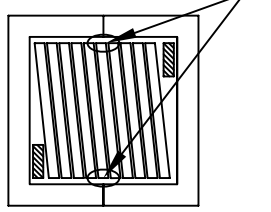
CAGE NO: 5DME2



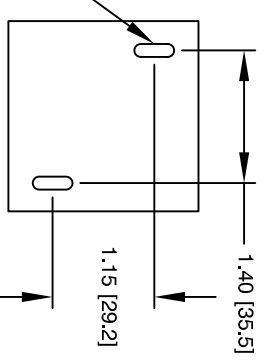
FRONT VIEW



SIDE VIEW



BOTTOM VIEW



MOUNTING HOLES PATTERN

REVISION HISTORY		SIGN & DATE	
REV	ECN	DESCRIPTION	DATE
A		PRODUCTION RELEASE	3/21/11
B		EDITS	6/24/11

DIMENSIONAL TOLERANCE	
	mm
C1	13.71 ± 1.50
C2	11.62 ± 1.00
D1	7.50 (TYP)
D2	1.00 (TYP)
L	58.0 MAX
W	58.0 MAX
H	36.0 MAX

DC-BIAS	L
0A	169 uH
5A	160 uH
10A	148 uH
15A	132 uH
20A	114 uH
25A	96 uH
30A	92 uH
35A	88 uH

QTY	CODE IDENT	MFG. P/N	DESCRIPTION	ITEM NO.
			High Current Helical Inductor	

PARTS LIST		Coil Winding Specialist, Inc.	
DRAWN	DATE	353 W. GROVE AVE	ORANGE, CA 92665
RL	2/11/11		
ENGR	2/11/11		
APPR	2/11/11		

DIMENSIONING AND TOLERANCE PER ANSI Y14.5M AND [DIMETERS].	
TOLERANCE INCHES:	∠=±0.30°
.XXX±.010 .XX±.020	∠=±0.30°
.XXX±.254 .XX±.51	∠=±0.30°
ANGLE PROJECTION	
DO NOT SCALE DRAWING	