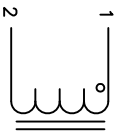


The information contained in this drawing is the sole property of Coil Winding Specialist, Inc. Any reproduction in part or whole without written permission of Coil Winding Specialist, Inc. is prohibited.

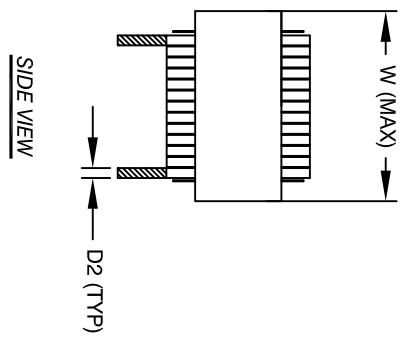
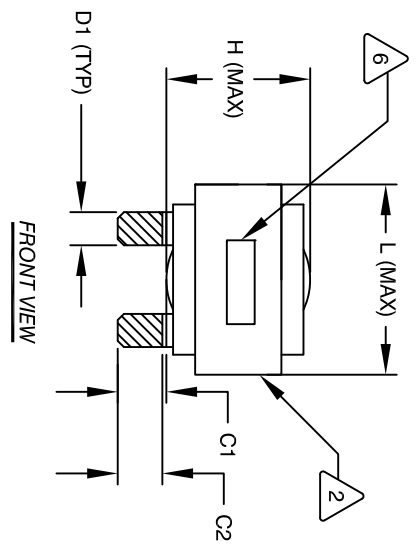
REVISION HISTORY

REV	ECN	DESCRIPTION	BY	DATE	CHK	DATE
A		PRODUCTION RELEASE	ROL	6/22/11	JCL	3/21/11



SCHEMATIC

- 1 NOISE FILTER
- 2 APPLICATION: ENERGY STORAGE FILTER, SWINGING CHOKES
- 3 BUILT TO ROHS COMPLIANCE AND LEAD FREE.
- 4 MARK PART NUMBER AND REVISION WHERE SHOWN
- 5 VANISH PART AND CURE
- 6 APPLY SILICON WHERE SHOWN

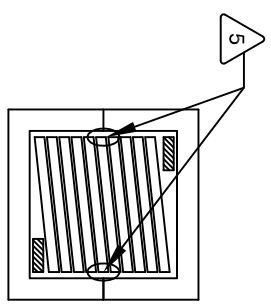


DIMENSIONAL TOLERANCE

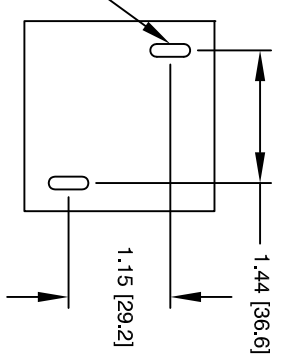
	mm	Inch
C1	13.96±1.50	0.55 ± 0.06
C2	11.41±1.00	0.45 ± 0.04
D1	7.0 (TYP)	0.28 (TYP)
D2	0.7 (TYP)	0.03 (TYP)
L	58.0 MAX	2.29 MAX
W	58.0 MAX	2.29 MAX
H	35.0 MAX	1.37 MAX

DC-BIAS L

0A	372.2uH
5A	334.7uH
10A	272.8uH
15A	210.7uH
20A	160.4uH
25A	129.1uH
27A	120.0uH



BOTTOM VIEW



MOUNTING HOLES PATTERN

- 1 VANISH DOLPH OR EQUAL SILICON DOW CORNING OR EQUAL NOMEK SPACERS FOR SIDE AND CENTER LEG OF CORES OUTER WRAP: 3M GLASS OR EQUAL WIRE: UL RECOGNIZED 200°C RATED MAGNET WIRE CORE: COMPACTED POWDERED CORE
- 2 INSULATION CLASS 200°C REQUIRED MATERIAL: UL RECOGNIZED 94V-0 FOR FLAMMABILITY
- 3 NOTES: UNLESS OTHERWISE SPECIFIED, READ FROM BOTTOM UP.

- 4 WRAP TAPE AROUND CORES WITH CORES AND NOMEK SPACERS ASSEMBLE PRE FORMED FLAT HELICAL COIL CONSTRUCTION
- 5 WEIGHT: 428 GRAM (TYP) MAX INDUCTOR TEMP RATING: 200°C RECOMMENDED OPERATING TEMP: -40°C TO 85°C HI-POT TEST FOR WINDING TO CORE ISOLATION. 1000VDC @ 2mA, 1 MIN INTERWINDING CAPACITANCE @ 10KHZ = 21.06pF (TYP) |z1@SRF=6.9 KILO-OHM (TYP) SRF=1.8 MHZ (TYP) RATED CURRENT: 27 AMPS DCR = 13.5 MILLIOHM MAX. L@DC BIAS: SEE TABLE ON RIGHT. L = 340 uH ± 15%, MEASURED AT 10 KHZ, 0.25V, ZERO DC BIAS SPECIFICATIONS:

CAGE NO: 5DME2

QTY	CODE IDENT	MFG. P/N	DESCRIPTION	ITEM NO.
			High Current Helical Inductor	

UNLESS OTHERWISE SPECIFIED	DRAWN	DATE	APPR.	DATE
	RL	2/11/11	JLJU	2/11/11

UNLESS OTHERWISE SPECIFIED	SCALE	SHEET	OF
	NOT_TO_SCALE	1	1