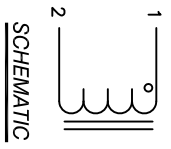


The information contained in this drawing is the sole property of Coil Winding Specialist, Inc. Any reproduction in part or whole without written permission of Coil Winding Specialist, Inc. is prohibited.

DIMENSIONAL TOLERANCE					
C	D	L1	L	W	H
(TYP)	(MIN)	(TYP)	(MAX)	(MAX)	(MAX)
0.50"	12.00"	11.00"	15.50"	4.65"	3.80"
[12.70]	[304.8]	[279.4]	[393.7]	[118.1]	[96.5]

REVISION HISTORY			SIGN & DATE		
REV	EON	DESCRIPTION	BY	DATE	CHK L DATE
A	151217-2	PRODUCTION RELEASE	AK	12/17/15	JLU/J2/17/15



SCHEMATIC

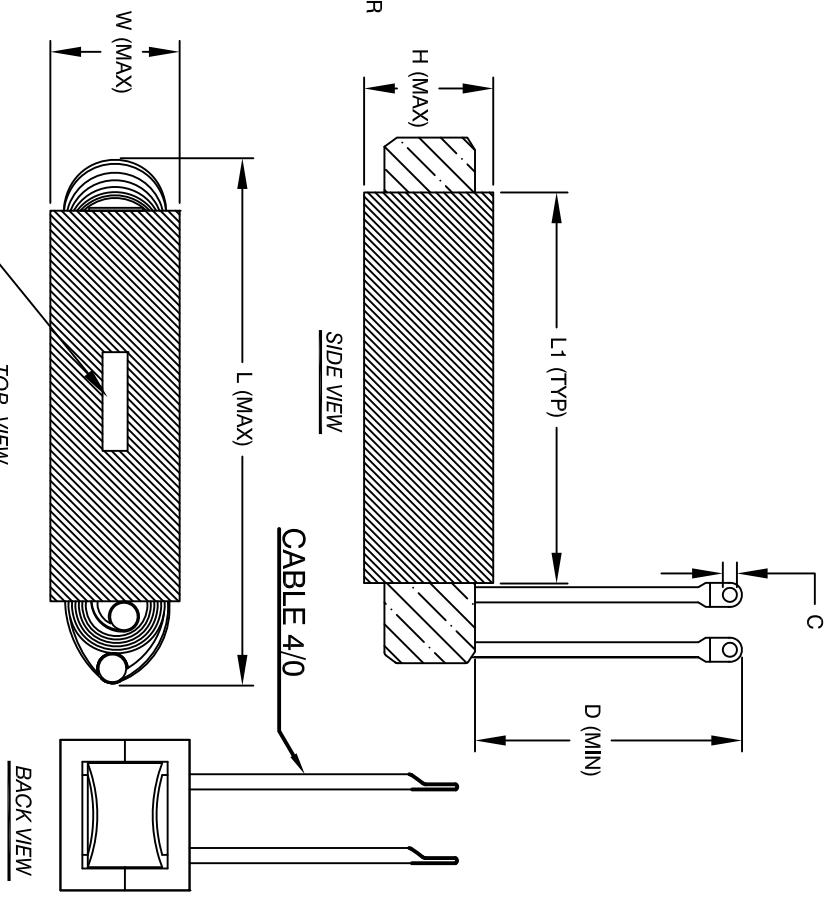
- 8 APPLICATION: OUTPUT CHOKE, HIGH CURRENT INDUCTOR, INPUT FILTER
- 7 BUILT TO ROHS COMPLIANCE
- 6 LABEL PART NUMBER AND REVISION WHERE SHOWN

- 5 VARNISHED AND CURE
APPLY SILICON IF REQUIRED
WRAP TAPE AROUND CORES
WITH CORES AND INSULATOR
PRE FORMED FLAT COPPER SHEETS
- 4 CONSTRUCTION:
WEIGHT: 46 LB (TYP)
RECOMMENDED OPERATING TEMP: -40°C TO 105°C
HI-POT TEST FROM WINDING TO CORE 1000VDC @ 2mA, 1 MIN
INTERWINDING CAPACITANCE @ SRF = 224pF (TYP)
|Z|@SRF=71 KIL-OHM
SRF=328 KHZ
RATED CURRENT: 350 AMPS, APPROPRIATE AIR FLOW NEEDED.
DCR = 4.5 MILLIOHM MAX.
L@DC BIAS: SEE TABLE ON RIGHT.
L=1048uH ± 12%, MEASURED AT 1 KHZ, 0.25V, ZERO DC BIAS
SPECIFICATIONS:

- 3 VARNISH
SILICON DOW CORNING OR EQUAL
OUTER WRAP: 3M GLASS OR EQUAL
CORE: COMPACTED POWDERED CORE
- 2 MATERIAL: UL RECOGNIZED
- 1

NOTES: UNLESS OTHERWISE SPECIFIED READ FROM BOTTOM UP.

CAGE CODE: 5DME2



DC-BIAS	L
0A	1048uH
10A	973uH
20A	895uH
30A	805uH
40A	714uH
50A	633uH
60A	600uH
75A	510uH
100A	380uH
125A	285uH
150A	220uH
175A	190uH
200A	150uH
225A	132uH
250A	98uH
275A	90uH
300A	78uH

PARTS LIST		AUTOCAD		SOLIDWORKS		DRAWN		ENGR		APPR		SCALE	
UNLESS OTHERWISE SPECIFIED													
DIMENSIONING AND TOLERANCE PER ANSI Y14.5M AND [DIMETERS].													
TOLERANCE INCHES: .XXX=±.010 .XX=±.020 TOLERANCE METERS: .XXX=±.254 .XX=±.51													
ANGLE PROJECTION													
DO NOT SCALE DRAWING													
www.coilws.com		353 W GROVE AVE		ORANGE, CA 92665		High Current Inductor		HCS-102M-300A		REV A			