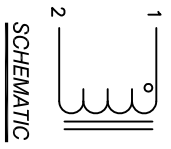


The information contained in this drawing is the sole property of Coil Winding Specialist, Inc. Any reproduction in part or whole without written permission of Coil Winding Specialist, Inc. is prohibited.

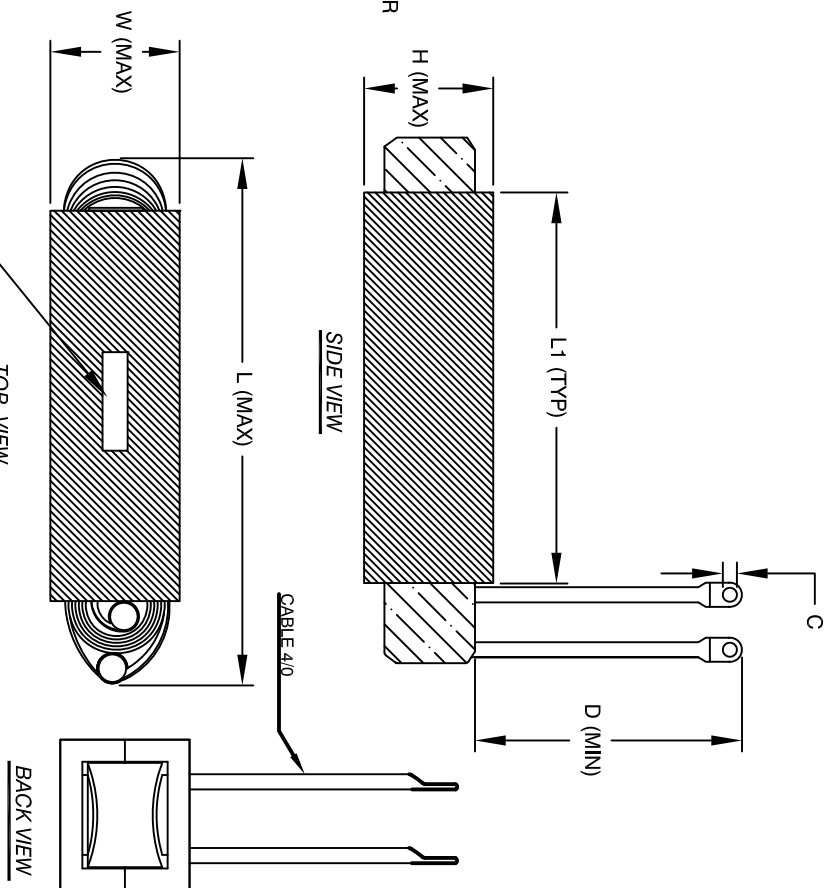
DIMENSIONAL TOLERANCE					
C	D	L1	L	W	H
(TYP)	(MIN)	(TYP)	(MAX)	(MAX)	(MAX)
0.50"	12.00"	11.00"	15.50"	4.65"	3.80"
[12.70]	[304.8]	[279.4]	[393.7]	[118.1]	[96.5]

REVISION HISTORY			
REV	EON	DESCRIPTION	SIGN & DATE
A	151217-1	PRODUCTION RELEASE	AK 12/17/15
			CHK L DATE
			AK 12/17/15
			UAW 12/17/15



SCHEMATIC

- 8 APPLICATION: OUTPUT CHOKE, HIGH CURRENT INDUCTOR, INPUT FILTER
- 7 BUILT TO ROHS COMPLIANCE
- 6 LABEL PART NUMBER AND REVISION WHERE SHOWN
- 5 VARNISHED AND CURE
APPLY SILICON IF REQUIRED
WRAP TAPE AROUND CORES
WITH CORES AND INSULATOR
PRE FORMED FLAT COPPER SHEETS
- 4 CONSTRUCTION:
WEIGHT: 46 LB (TYP)
RECOMMENDED OPERATING FREQUENCY: 60Hz TO 500KHz
RECOMMENDED AMBIENT OPERATING TEMP: -40°C TO 105°C
HI-POT TEST FROM WINDING TO CORE 1000VDC @ 2mA, 1 MIN
INTERWINDING CAPACITANCE @ SRF = 215pF (TYP)
|Z|@SRF=8.54 KIL-OHM
SRF=381 KHz
RATED CURRENT: 350 AMPS, APPROPRIATE AIR FLOW NEEDED.
DCR = 4.5 MILLIOHM MAX.
L@DC BIAS: SEE TABLE ON RIGHT.
L=800uH ± 12%, MEASURED AT 1 KHz, 0.25V, ZERO DC BIAS
SPECIFICATIONS:



DC-BIAS	L
0A	800uH
20A	713uH
40A	574uH
60A	455uH
80A	370uH
100A	311uH
120A	268uH
140A	246uH
160A	229uH
180A	220uH
200A	208uH
240A	185uH
280A	172uH
320A	163uH
350A	150uH

- 3 VARNISH
SILICON DOW CORNING OR EQUAL
OUTER WRAP: 3M GLASS OR EQUAL
CORE: COMPACTED POWDERED CORE
1 MATERIAL: UL RECOGNIZED

NOTES: UNLESS OTHERWISE SPECIFIED READ FROM BOTTOM UP.

CAGE CODE: 5DME2

PARTS LIST	
AUTOCAD SOLIDWORKS	X
UNLESS OTHERWISE SPECIFIED	
DIMENSIONING AND TOLERANCE PER ANSI Y14.5M	
ALL DIMENSIONS ARE IN INCHES AND [MILLIMETERS].	
TOLERANCE INCHES: .XXX±.010 .XX±.020	±.40°30'
TOLERANCE METRICS: .XXX±.254 .XX±.51	±.40°30'
ANGLE PROJECTION	
DO NOT SCALE DRAWING	
DRAWN: AK	12/17/15
ENGR: JLAU	12/17/15
APPR: BO	12/17/15
www.coilws.com	353 W. GROVE AVE
sales@coilws.com	ORANGE, CA 92665
Coil Winding Specialist, Inc.	
TITLE: High Current Inductor	
High Frequency Inductor	
800 uH, 350 Amps	
SIZE DWG. NO. HCS-801M-350A	REV A
SCALE NOT TO SCALE	SHEET 1 OF 1