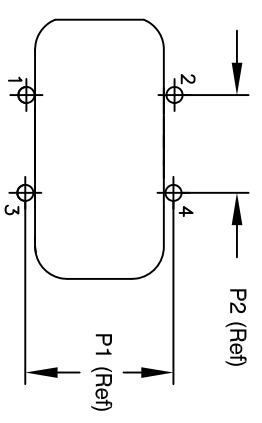
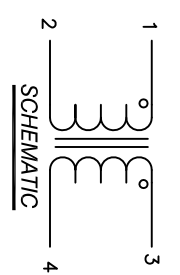
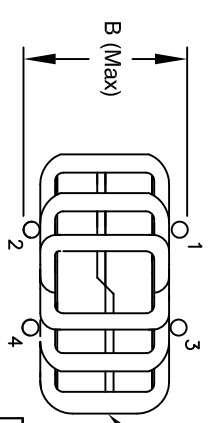
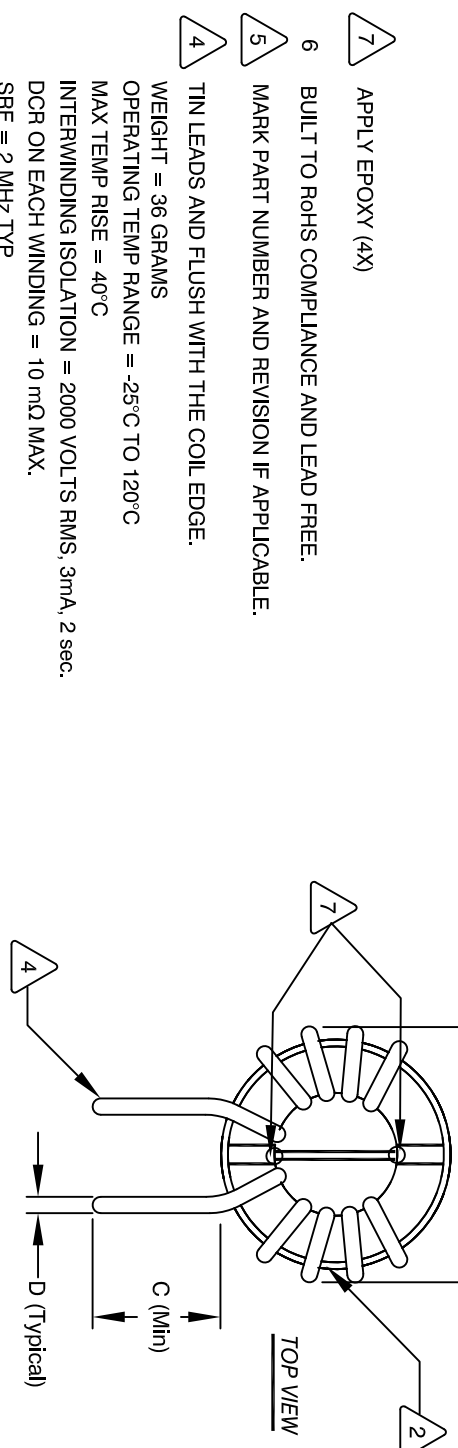


The information contained in this drawing is the sole property of Coil Winding Specialist Inc. (CWS). Any reproduction in part or whole without written permission of CWS is prohibited.

DIMENSIONAL TOLERANCE INCHES [MM]						
A(OD) Max	B(WIDTH) Max	C(LEAD) Min	D(LEAD DIA) TYP	E (Min/Max)	P1 Ref	P2 Ref
1.34 [34.00]	0.75 [19.1]	0.50 [12.7]	0.05 [1.29]		0.60 [15.24]	0.50 [12.70]

REVISION HISTORY		SIGN & DATE				
REV	ECN	DESCRIPTION	BY	DATE	CHK	DATE
A	1	PRODUCTION RELEASE	KC	12/16/10	JLU	12/16/10
B		ELEC. AND MECH. SPEC UPDATE	CM	03/30/11	JLU	03/30/11
C		ELEC. AND MECH. SPEC UPDATE	JM	08/06/12	JLU	08/06/12
D		ELEC. AND MECH. SPEC UPDATE	TN	10/02/17	JLU	10/02/17
E		REVISED MECH. AND ELEC. SPEC.	TN	07/12/18	JL	07/12/18



- 7 APPLY EPOXY (4X)
- 6 BUILT TO ROHS COMPLIANCE AND LEAD FREE.
- 5 MARK PART NUMBER AND REVISION IF APPLICABLE.
- 4 TIN LEADS AND FLUSH WITH THE COIL EDGE.
 WEIGHT = 36 GRAMS
 OPERATING TEMP RANGE = -25°C TO 120°C
 MAX TEMP RISE = 40°C
 INTERWINDING ISOLATION = 2000 VOLTS RMS, 3mA, 2 sec.
 DCR ON EACH WINDING = 10 mΩ MAX.
 SRF = 2 MHz TYP
 RATED VOLTAGE = 250 VAC OR VDC
 RATED CURRENT = 12 AMPS
 LEAKAGE INDUCTANCE = 6.40 μH TYP @ 10KHz 1 Vrms.
 INTERWINDING CAPACITANCE = 3.83 pF TYP @ 10 KHz
 IMPEDANCE = 5.0 kΩ TYP @ 2 MHz
 L = 10.0 mH NOM @ 1 KHz, 1 Vrms, 0 ADC
 L = 1.87 mH NOM @ 100 KHz, 1 Vrms, 0 ADC
 INSULATION RESISTANCE = 100 MEGA-OHMS MIN. @ 500 VDC
 SPECIFICATIONS AT 25°C:
- 3 WIRE: UL CLASS 200°C
 CWS BYTEMARK OR OTHER APPROVED PART
 CORE: NANOCRYSTALLINE OR AMORPHOUS CORE
- 2 BOBBIN/CASE = UL CLASS B (130°)
 MATERIAL: UL RECOGNIZED 94V-0 FOR FLAMMABILITY

NOTES: UNLESS OTHERWISE SPECIFIED, READ NOTES FROM BOTTOM TO TOP.

UNLESS OTHERWISE SPECIFIED	
DIMENSIONING AND TOLERANCE PER ANSI Y14.5M AND [MILLIMETERS]	DRMM RLAU
TOLERANCE INCHES: .XXX=±.005 .XX=±.015 TOLERANCE METRICS: .XXX=±.127 .XX=±.38	CHKD AK
ANGLE PROJECTION	ENGR. JLU
DO NOT SCALE DRAWING	APPR. JLU

QTY	CODE IDENT	MFG. P/N	DESCRIPTION	ITEM NO.

PARTS LIST	
AUTOCAD SOLIDWORKS	X
DATE	12/16/10
DRWN	RLAU
CHKD	AK
ENGR.	JLU
APPR.	JLU
DATE	03/30/11
TITLE:	Nanocrystalline Inductor Common Mode Chokes Vertical Mount
SIZE	DMG. NO. HN-V-902U-12A
SCALE	NOT TO SCALE
REV	E