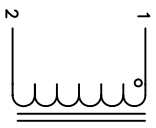
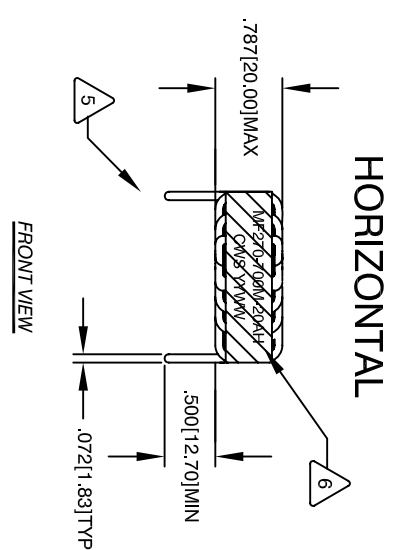


The information contained in this drawing is the sole property of Coil Winding Specialist, Inc. Any reproduction in part or whole without written permission of Coil Winding Specialist, Inc. is prohibited.

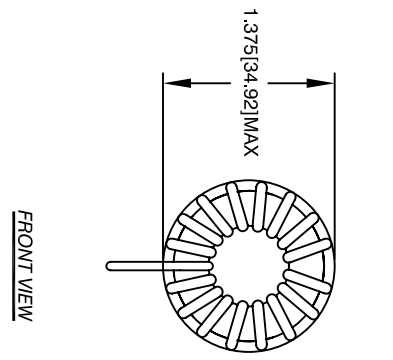
REVISION HISTORY				SIGN & DATE		
REV	ECN	DESCRIPTION	BY	DATE	CHK	DATE
A		INITIAL RELEASE	ON	8/3/11	JLJU	8/3/11
B	140721	DCR CHANGED	AK	7/21/14	BO	7/21/14



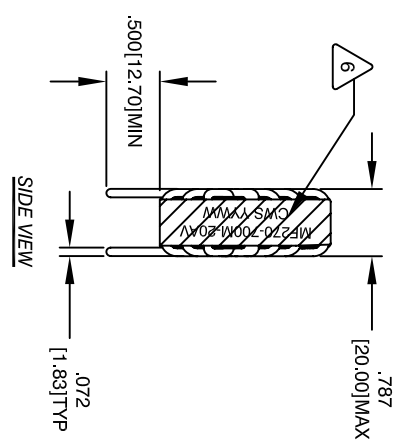
SCHEMATIC



FRONT VIEW



FRONT VIEW



SIDE VIEW

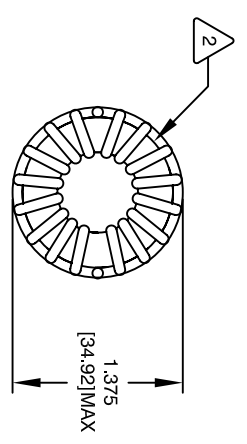
**VERTICAL**

- 7 BUILD TO ROHS COMPLIANCE
- 6 MARK PART NUMBER AND REVISION, IF APPLICABLE WRAP INDUCTOR GLASS TAPE OR EQUAL
- 5 TO THE CORE MUST REST FLAT ON PCB, LEADS MUST BE TANGENT FLUSH WITH THE COIL EDGE, AS SHOWN (I.E. COIL REMOVE INSULATION AND TIN LEADS 0.50 INCH
- 4 WIND COILS EVENLY SPACED AROUND THE CORE CONSTRUCTION:

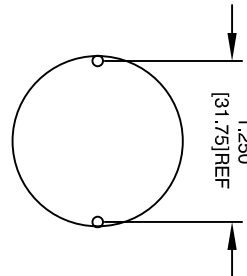
THESE SPECIFICATIONS ARE BASED ON LOW RIPPLE CURRENT WEIGHT: ~ 58 GRAM  
 RECOMMENDED OPERATING TEMP: -40°C-125°C  
 HIPOT TEST FOR WINDING TO CORE ISOLATION = 1250 VDC 5 SEC  
 CURRENT RATING: 20 AMPS, 40 °C TEMP, RISE, NO AIR FLOW  
 DCR = 11.0 MILLIOHMS MAX.  
 INDUCTANCE @ 20.0 AMP ~ 29 uH (LESS THAN 10% RIPPLE)  
 INDUCTANCE @ 10.0 AMP ~ 56 uH (LESS THAN 10% RIPPLE)  
 INDUCTANCE = 70 uH ±15% @ LOW DC BIAS, 1 KHZ, 250mV SPECIFICATIONS:

- 3 WIRE: UL RECOGNIZED 200°C RATED MAGNET WIRE CWS BYTEMARK OR OTHER APPROVED PART CORE: POWDERED TOROIDAL CORE
- 2 RATING CLASS F (155°C MIN.) REQUIRED MATERIAL: UL RECOGNIZED FOR FLAMMABILITY
- 1

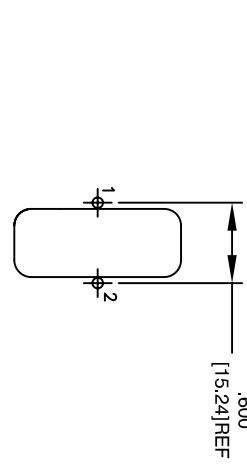
NOTES: UNLESS OTHERWISE STATED, READ NOTES FROM BOTTOM UP  
 CAGE CODE = 5DME2



BOTTOM VIEW



MOUNTING HOLES PATTERN



MOUNTING HOLES PATTERN

PARTS LIST			
AUTOCAD	X	DATE	8/3/11
SOLIDWORKS		DATE	8/3/11
SIGN		DATE	8/3/11
DRWN	ON	DATE	8/3/11
DESD	JLJU	DATE	8/3/11
ENGR	JLJU	DATE	8/3/11
APPR	JLJU	DATE	8/3/11
TITLE:		SIZE	REV
POWER INDUCTOR		B	B
70 uH, 20 Amp		SCALE	NOT TO SCALE
SALES@COILWS.COM		SHEET	1 OF 1
WWW.COILWS.COM			
353 W. Grove Ave			
Orange, CA 92665			