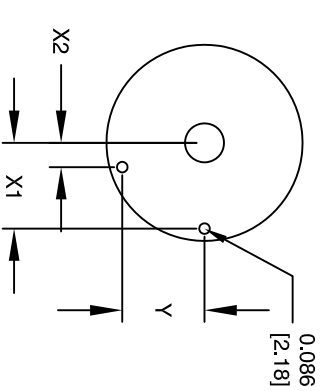
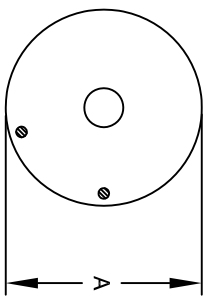
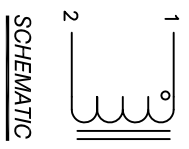
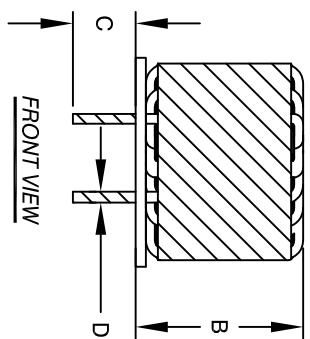


The information contained in this drawing is the sole property of CMS Coil Winding Specialist. Any reproduction in part or whole without written permission of CMS Coil Winding Specialist is prohibited.

DIMENSIONAL TOLERANCES INCHES [MM]						
A	B	C	D	X1	X2	Y
MAX	MAX	MIN	REF	REF	REF	REF
2.26 [57.50]	2.00 [50.80]	0.75 [19.05]	0.07 [1.83]	1.00 [25.40]	0.34 [8.69]	0.94 [23.88]

REVISION HISTORY			SIGN & DATE			
REV	ECN	DESCRIPTION	BY	DATE	CHK	DATE
A		PRODUCTION RELEASE	JL	05/22/17	AM	05/22/17



- 7 BUILT TO ROHS COMPLIANCE.
- 6 IF APPLICABLE, LABEL PART NUMBER AND REVISION POSITION LEADS AS REQUIRED REMOVE WIRE INSULATION AND TIN WIND COILS EVENLY SPACED CONSTRUCTION:
- 5 WEIGHT: ~660 GRAMS
- 4 HI-POT WINDING-TO-CORE 1250 V AC, 10 SEC INTERWINDING CAPACITANCE = 97pF
|Z| @ SRF = 52 KΩ
DCR = 55mΩ MAX
SRF ~ 465 KHz
MAX TEMP. RISE @ IDC 20 AMP, LESS THAN 50°C WITH NO AIRFLOW
DC BIASED = 20 AMPS, INDUCTANCE = 0.7 mH
DC BIASED = 10 AMPS, INDUCTANCE = 1.0 mH
INDUCTANCE @ 0 AMP = 1.2 mH±15% (LESS THAN 10% RIPPLE)
TEST FREQUENCY: 1.0 KHz; TEST VOLTAGE: 250mV
RATED MAX. CURRENT = 20 AMPS RMS; FREQUENCY: 1KHz
OPERATING TEMPERATURE RANGE: -40° TO 180°C
SPECIFICATIONS @ 25°C
- 3 WIRE: UL RATED CLASS 200°C
CORE: HIGH TEMP POWDERED CORE
- 2 RATING UL-CLASS H (180°C) REQUIRED
MATERIAL: UL RECOGNIZED FLAMMABILITY
- 1

UNLESS OTHERWISE SPECIFIED	
DIMENSIONING AND TOLERANCE PER ANSI Y14.5M AND [MILLIMETERS].	ANGLE PROJECTION
TOLERANCE INCHES: XXX=±.005 XX=±.015 X=±.030 TOLERANCE METRICS: XXX=±.127 XX=±.38 X=±.38	DO NOT SCALE DRAWING

CODE IDENT	MFG. P/N	DESCRIPTION	ITEM NO.
PARTS LIST			
AUTOCAD SOLIDWORKS	X		
DRWN JL	05/22/17		
CHKD AM	05/22/17		
ENGR KLC	05/22/17		
APPR KLC	05/22/17		
TITLE:		Toroidal Power Inductor	
SIZE [MFG. NO.]		1.6 mH, 20 Amp	
SCALE		NOT TO SCALE	
SHEET 1 OF 1		REV A	

COILWS.COM, INC
353 W Grove Ave
Orange, CA 92865
CWS Coil Winding Specialist.
www.coilws.com