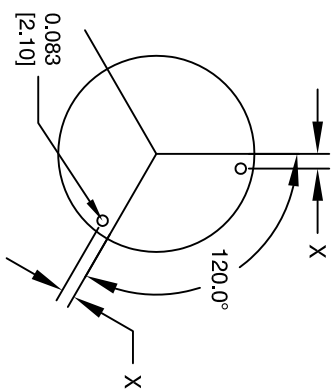
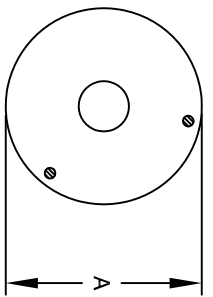
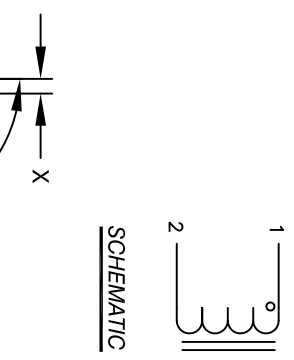
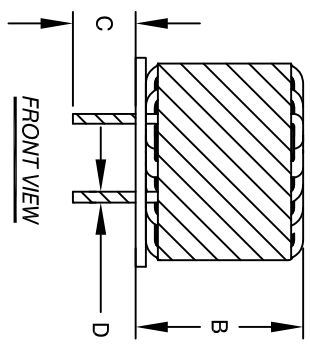


The information contained in this drawing is the sole property of CMS Coil Winding Specialist. Any reproduction in part or whole without written permission of CMS Coil Winding Specialist is prohibited.

| DIMENSIONAL TOLERANCES INCHES [MM] | | | | | |
|------------------------------------|-----------------|-----------------|----------------|--|-----------------|
| A | B | C | D | | X |
| MAX | MAX | MIN | REF | | REF |
| 2.68 [68.00] | 1.87 [47.50] | 0.75 [19.05] | 0.07 [1.83] | | 0.118 [3.00] |

| REVISION HISTORY | | | |
|------------------|-----|--------------------|----------|
| REV | ECN | DESCRIPTION | DATE |
| A | | PRODUCTION RELEASE | 05/22/17 |



- BUILT TO ROHS COMPLIANCE.
- IF APPLICABLE, LABEL PART NUMBER AND REVISION
- POSITION LEADS AS REQUIRED
REMOVE WIRE INSULATION AND TIN
WIND COILS EVENLY SPACED
CONSTRUCTION:
- WEIGHT: ~850 GRAMS
- HI-POT WINDING-TO-CORE 1250 V AC, 10 SEC
INTERWINDING CAPACITANCE = 127pF
|Z| @ SRF = 71 KΩ
DCR = 60mΩ MAX
SRF ~ 350 KHz
MAX TEMP. RISE @ IDC 20 AMP, LESS THAN 50°C WITH NO AIRFLOW
DC BIASED = 20 AMPS, INDUCTANCE = 0.88 mH
DC BIASED = 10 AMPS, INDUCTANCE = 1.34 mH
INDUCTANCE @ 0 AMP = 1.6 mH±15% (LESS THAN 10% RIPPLE)
TEST FREQUENCY: 1.0 KHz; TEST VOLTAGE: 250mV
RATED MAX. CURRENT = 20 AMPS RMS; FREQUENCY: 1KHz
OPERATING TEMPERATURE RANGE: -40° TO 180°C
SPECIFICATIONS @ 25°C
- WIRE: UL RATED CLASS 200°C
CORE: HIGH TEMP POWDERED CORE
- RATING UL-CLASS H (180°C) REQUIRED
MATERIAL: UL RECOGNIZED FLAMMABILITY

NOTES: UNLESS OTHERWISE SPECIFIED, READ NOTES FROM BOTTOM TO UP.

| | |
|--|----------------------|
| UNLESS OTHERWISE SPECIFIED | |
| DIMENSIONING AND TOLERANCE PER ANSI Y14.5M AND [MILLIMETERS] | ANGLE PROJECTION |
| TOLERANCE INCHES: XXX=±.005 XX=±.015 X=±0.30' | DO NOT SCALE DRAWING |
| TOLERANCE METRICS: XXX=±.127 XX=±.38 | |

| CODE IDENT | MFG. P/N | DESCRIPTION | ITEM NO. |
|--------------------|------------------|---|----------|
| PARTS LIST | | | |
| AUTOCAD SOLIDWORKS | | CMS Coil Winding Specialist. 353 W Grove Ave Orange, CA 92865 | |
| DATE | DATE | TITLE: | |
| 05/22/17 | 05/22/17 | Toroidal Power Inductor | |
| ENGR. KLC | 05/22/17 | 1.6 mH, 20 Amp | |
| APPR. KLC | 05/22/17 | | |
| SIZE | DWG. NO. | | REV |
| B | MK5712-162M-20AH | | A |
| SCALE | NOT TO SCALE | | |
| | | SHEET 1 OF 1 | |