

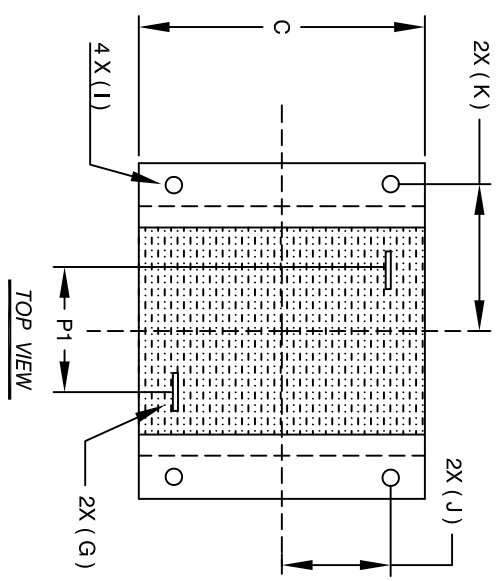
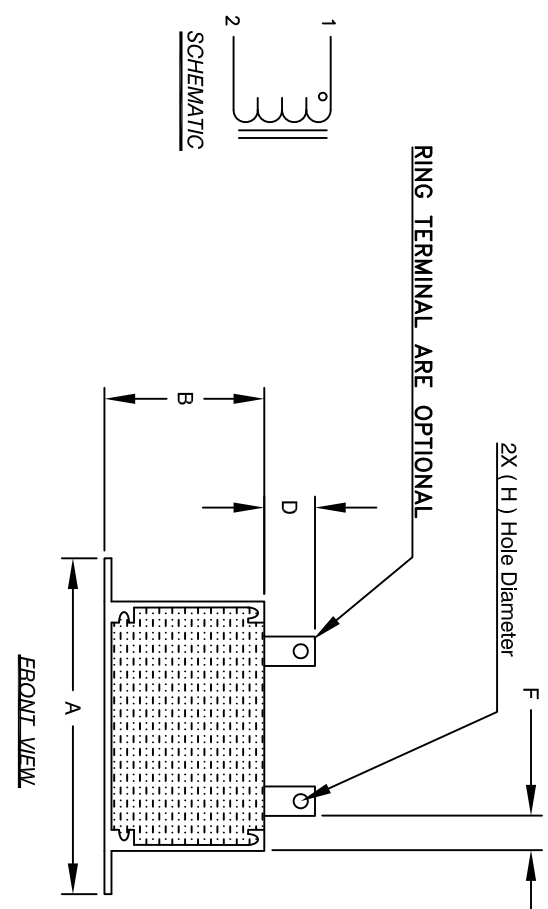
The information contained in this drawing is the sole property of Coil Winding Specialist, Inc. Any reproduction in part or whole without written permission of Coil Winding Specialist, Inc. is prohibited.

REVISION HISTORY

REV	ECN	DESCRIPTION	BY	DATE	CHK	DATE
A	131030	PRODUCTION RELEASE	AK	07/05/16	BO	07/05/16
B		DIMENSION CHANGES	EO	7/26/18	JL	7/26/18

DIMENSIONS

	mm	In
A	85.60±0.51	3.37±0.02
B	40.13±1.27	1.58±0.05
C	61.21±1.27	2.41±0.05
D	11.43 Ref.	0.45 Ref.
E	13.46 Ref.	0.53 Ref.
F	11.18 Ref.	0.44 Ref.
G	2.5x7.6 Ref.	0.10X0.30 Ref.
H	2.72 Min.	0.107 Min.
I	4.06 Min.	0.160 Min.
J	20.50±0.38	0.81±0.015
K	37.00±0.38	1.457±0.015
P1	27.60±1.50	1.09±0.06
P2	34.40±1.50	1.35±0.06



PICTURE

QTY	CODE IDENT	MFG. P/N	DESCRIPTION	ITEM NO.
			PARTS LIST	

AUTOCAD SOLIDWORKS SIGN	DATE	TITLE	SCALE	DRW. NO.	REV
AK	7/29/16	High Current Helical Inductor	A	EES55246-300M-180A	B
JM	7/29/16	30 uH, 180 Amps, Horizontal	NOT_TO_SCALE		
JL	7/29/16				
BO	7/29/16				

- 1 MATERIALS:
- 2 SPECIFICATIONS:
 - ENCLOSURE: ALUMINUM METAL
 - WIRE: 200°C RATED MAGNET WIRE UL APPROVED
 - CORE: POWDER CORE
- 3 MARK PART NUMBER AND REVISION WHERE SHOWN
- 4 BUILT TO ROHS COMPLIANCE.
- 5 APPLICATION: ENERGY STORAGE FILTER, SWINGING CHOKE.

WEIGHT: 482 GRAM (TYP)
 MAX INDUCTOR TEMP RATING: 200°C
 APPROPRIATE AIR FLOW.
 RECOMMENDED AMBIENT OPERATING TEMP: -40°C TO 85°C WITH HI-POT TEST 1000VDC @ 2mA, 1 MIN. TERMINALS TO CASE INTERWINDING CAPACITANCE @ 10KHZ = 19pF (TYP)
 |Z| @ SRF = 3.8 KIL-OHM (TYP)
 SRF = 6.9 MHZ (TYP)
 RATED CURRENT: 180 AMPS
 DCR = 1.0 MILLI-OHM MAX.
 L @ DC BIAS: SEE TABLE
 L = 300uH ± 15% AT 10 KHZ, 0.25V, ZERO DC BIAS

NOTES: UNLESS OTHERWISE SPECIFIED, READ FROM BOTTOM UP.
 CAGE CODE: 5DME2

EP FORM0005 REV 3 10/01

CAD-FILE: