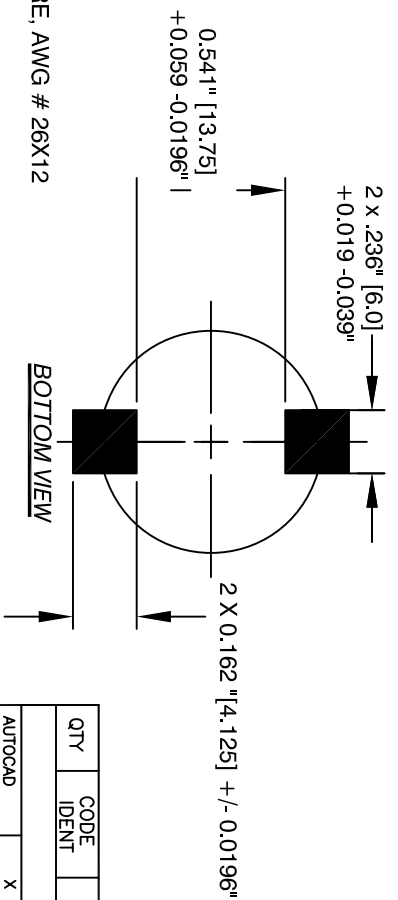
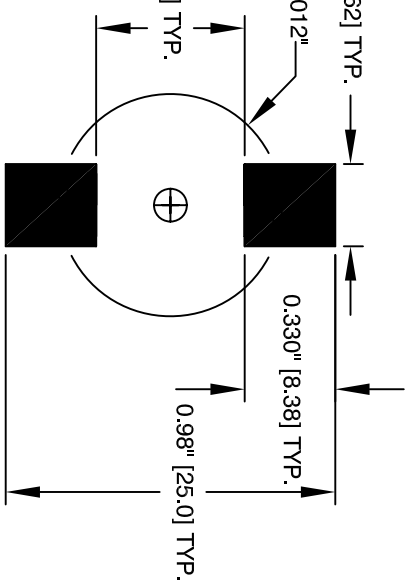
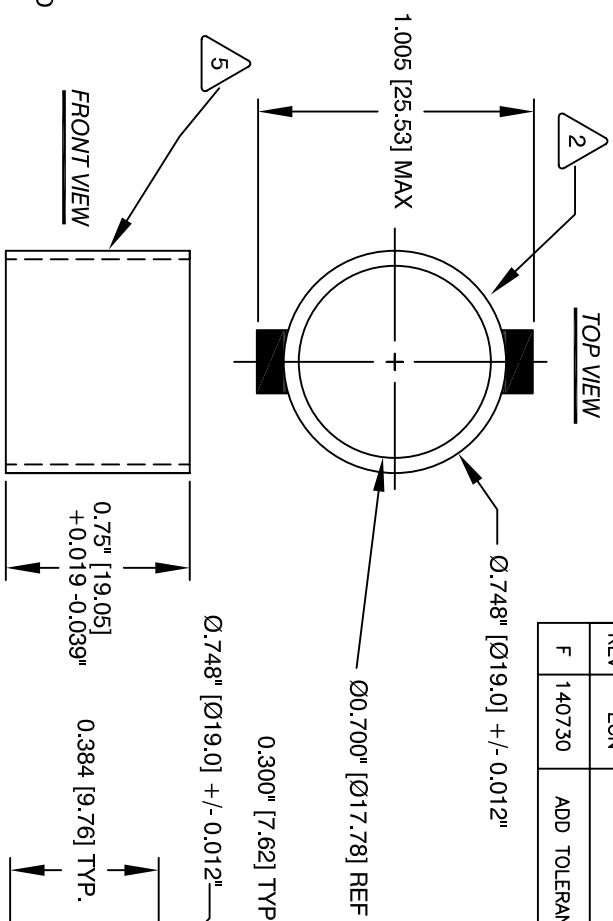
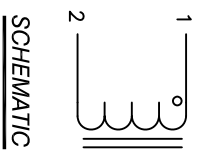


The information contained in this drawing is the sole property of CWS Coil Winding Specialist. Any reproduction in part or whole without written permission of CWS Coil Winding Specialist is prohibited.

REVISION HISTORY			
REV	ECN	DESCRIPTION	SIGN & DATE
			BY DATE CHK DATE
F	140730	ADD TOLERANCE TO DIMENSIONS	AK 7/30/14 JLAU 7/30/14



6 BUILT TO RoHS COMPLIANCE

5 WHERE SHOWN, USING A PERMANENT MARKING METHOD
IF APPROPRIATE, MARK PART NUMBER AND REVISION

4 WIND 8 TURNS, EVENLY SPACED
CONSTRUCTION:

3 SPECIFICATIONS @ 25°C
HI-POT TEST FOR CORE TO WINDING = 250VDC
DCR = 4.0 MILLI-OHMS MAX
L = 6.0 UH ±20% @100 KHz, 250 mV

2 WIRE: UL RECOGNIZED 155°C RATED MAGNET WIRE, AWG # 26X12
CWS BYTEMARK OR OTHER APPROVED PART
CORE: COATED MPP CORE

1 MATERIAL: UL RECOGNIZED 94V-0 FOR FLAMMABILITY

NOTES: UNLESS OTHERWISE SPECIFIED, READ FROM BOTTOM UP.

QTY	CODE	IDENT	MFG. P/N	DESCRIPTION	ITEM NO.
				PARTS LIST	
UNLESS OTHERWISE SPECIFIED					
DIMENSIONING AND TOLERANCE PER ANSI Y14.5M					
ALL DIMENSIONS ARE IN INCHES AND [MILLIMETERS].					
TOLERANCE INCHES: $\varnothing = \pm 0.30^{\circ}$					
TOLERANCE METRICS: $\varnothing = \pm 0.30^{\circ}$					
ANGLE PROJECTION $\varnothing = \pm 25.4$.XX = ±.51					
DO NOT SCALE DRAWING					
AUTOCAD SOLIDWORKS SIGN			X		
DRAWN	TDK	DATE	2/17/06		
CHECKED	JLAU	DATE	2/17/06		
ENGR.	KSUM	DATE	2/17/06		
APPR.	JLAU	DATE	2/17/06		
TITLE:			SIZE [Dwg. No.]		
High Current Output Choke			B		
SCALE			N/A		
MFG. P/N			CWS Coil Winding Specialist.		
DESCRIPTION			353 W GROVE AVE		
ITEM NO.			ORANGE, CA 92865		
PARTS LIST			CWS-13560-6ROM-D		
SIGNATURE			REV F		