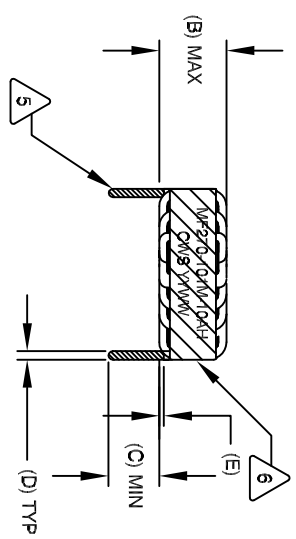


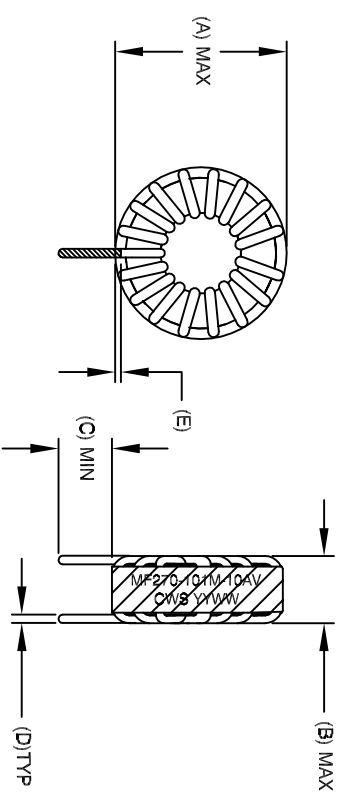
The information contained in this drawing is the sole property of CWS Coil Winding Specialist. Any reproduction in part or whole without written permission of CWS Coil Winding Specialist is prohibited.

DIMENSIONAL TOLERANCE						
A (OD) MAX	B (HGT) MAX	C (LEAD) MIN	D (LEAD OD) TYP	E MIN/MAX	P1 REF	P2 REF
1.300 [33.02]	.700 [17.78]	.500 [12.70]	.031 [.81]	.040-.080 [1.00-1.90]	.800 [20.32]	1.200 [30.48]

REVISION HISTORY				SIGN & DATE		
REV	ECN	DESCRIPTION	BR	DATE	DATE	
A		INITIAL RELEASE	KLC	5/10/10	AK	5/10/10
B		CHANGE TO 10 AMP & PN	KLC	10/1/10	AK	10/1/10



FRONT VIEW



FRONT VIEW

SIDE VIEW

HORIZONTAL

VERTICAL

- 8 BUILD TO ROHS COMPLIANCE
- 7 ** ADD SUFFIX "H" FOR HORIZONTAL & "V" FOR VERTICAL
- 6 USING A PERMANENT MARKING METHOD MARK PART NUMBER AND REVISION, IF APPLICABLE WRAP INDUCTOR WITH 3M # 69 OR EQUAL

- 5 TO THE CORE MUST REST FLAT ON PCB, LEADS MUST BE TANGENT FLUSH WITH THE COIL EDGE AS SHOWN (I.E. COIL REMOVE INSULATION AND TIN LEADS 0.50 INCH

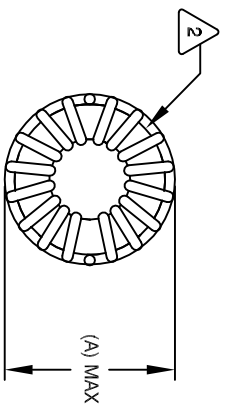
- 4 WIND COILS EVENLY SPACED AROUND THE CORE CONSTRUCTION:

- 3 THESE SPECIFICATIONS ARE BASED ON LOW RIPPLE CURRENT WEIGHT: ~ 47 GRAM OPERATING TEMP: -55°C TO +180°C HI-POT TEST FOR WINDING TO CORE ISOLATION = 1250 VDC 5 SEC AT IDC OF 10 AMPS, LESS THAN 40 °C TEMP. RISE DCR = 23.0 MILLI-OHMS MAX. INDUCTANCE @ 10.0 AMP ~ 66 uH (LESS THAN 10% RIPPLE) INDUCTANCE = 100 uH ± 15% @ LOW DC BIAS, 100 KHZ, 250mvV SPECIFICATIONS:

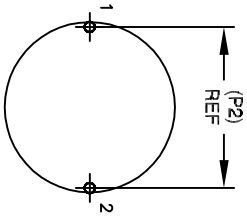
- 2 WIRE: UL RECOGNIZED 200°C RATED MAGNET WIRE CWS BYTEMARK OR OTHER APPROVED PART CORE: POWDERED TOROIDAL CORE

- 1 RATING CLASS H (180 °C) REQUIRED MATERIAL: UL RECOGNIZED 94V-0 FOR FLAMMABILITY

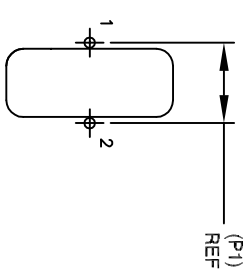
NOTES: UNLESS OTHERWISE STATED, READ NOTES FROM BOTTOM UP



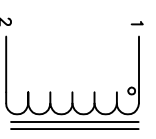
BOTTOM VIEW



MOUNTING HOLES PATTERN



MOUNTING HOLES PATTERN



SCHEMATIC

CODE	IDENT	MFG. P/N	DESCRIPTION	ITEM NO.
			PARTS LIST	
			AUTOCAD SOLIDWORKS SIGN	
			DATE	
			DRWNG	
			DATE	
			ENGR	
			APPR	
			DATE	
			SCALE	
			SHEET	