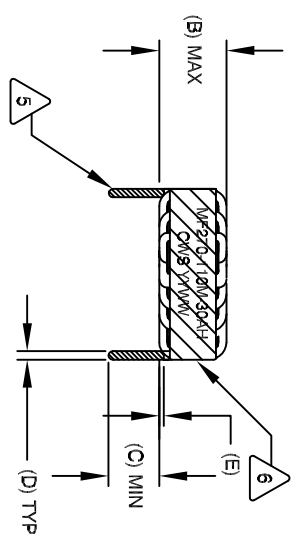


The information contained in this drawing is the sole property of CWS Coil Winding Specialist. Any reproduction in part or whole without written permission of CWS Coil Winding Specialist is prohibited.

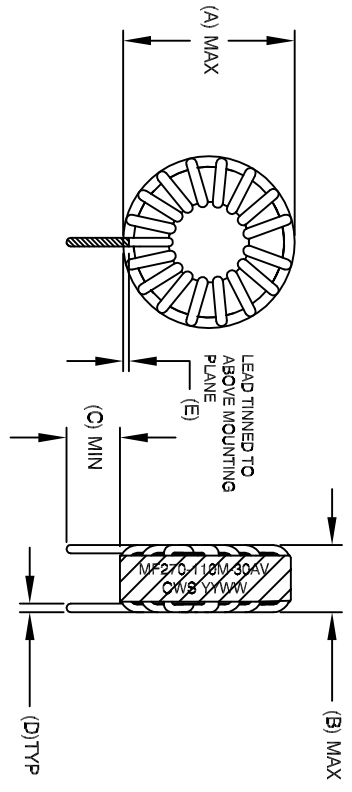
DIMENSIONAL TOLERANCE										
A (OD) MAX	B (HGT) MAX	C (LEAD) MIN	D (LEAD OD) TYP	E MIN/MAX	P1 REF	P2 REF				
1.378 [35.00]	.700 [17.78]	.500 [12.70]	.080 [2.03]	.040-.080 [1.00-1.90]	.800 [20.32]	1.200 [30.48]				

REVISION HISTORY				SIGN & DATE		
REV	ECN	DESCRIPTION	BR	DATE	CHK	DATE
A		INITIAL RELEASE	KLC	10/1/10	AK	10/1/10



FRONT VIEW

HORIZONTAL

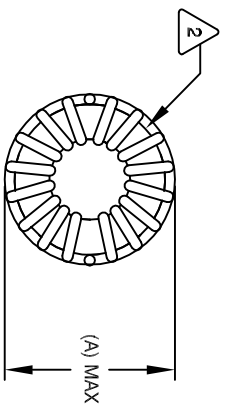


FRONT VIEW

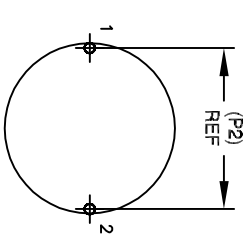
SIDE VIEW

VERTICAL

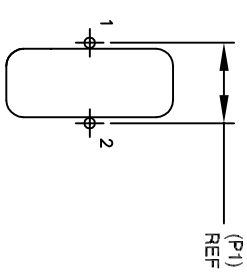
- 8 BUILD TO ROHS COMPLIANCE
- 7 ** ADD SUFFIX "H" FOR HORIZONTAL & "V" FOR VERTICAL
USING A PERMANENT MARKING METHOD
MARK PART NUMBER AND REVISION, IF APPLICABLE
WRAP INDUCTOR WITH 3M # 89 OR EQUAL
- 6 TO THE CORE
MUST REST FLAT ON PCB; LEADS MUST BE TANGENT
FLUSH WITH THE COIL EDGE, AS SHOWN (I.E. COIL
REMOVE INSULATION AND TIN LEADS 0.50 INCH
- 5 WIND COILS EVENLY SPACED AROUND THE CORE
CONSTRUCTION:
- 4 THESE SPECIFICATIONS ARE BASED ON LOW RIPPLE CURRENT
WEIGHT: ~ 47 GRAM
OPERATING TEMP: -55°C TO +180°C
HI-POT TEST FOR WINDING TO CORE ISOLATION = 1250 VDC 5 SEC
AT IDC OF 30 AMPS, LESS THAN 40 °C TEMP. RISE
DCR = 4.0 MILLI-OHMS MAX.
INDUCTANCE @ 30.0 AMP ~ 8.5 uH (LESS THAN 2 AMP RIPPLE)
INDUCTANCE @ 20.0 AMP ~ 9.5 uH (LESS THAN 10% RIPPLE)
INDUCTANCE = 10.8 uH ± 15% @ LOW DC BIAS, 1 KHZ, 250mV
SPECIFICATIONS:



BOTTOM VIEW

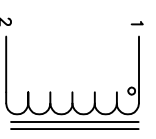


MOUNTING HOLES PATTERN



MOUNTING HOLES PATTERN

- 3 WIRE: UL RECOGNIZED 200°C RATED MAGNET WIRE
CWS BYTEMARK OR OTHER APPROVED PART
CORE: POWDERED TOROIDAL CORE
- 2 RATING CLASS H (180 °C) REQUIRED
MATERIAL: UL RECOGNIZED 94V-0 FOR FLAMMABILITY
- 1



SCHEMATIC

NOTES: UNLESS OTHERWISE STATED, READ NOTES FROM BOTTOM UP

PARTS LIST			DESCRIPTION			ITEM NO.
CODE	IDENT	MFG. P/N				
AUTOCAD		X				
SOLIDWORKS						
SIGN						
DATE						
DATE	10/1/10					
DRW	KLC	10/1/10				
CHKD	AK	10/1/10				
ENGR.	KLC	10/1/10				
APPR.	KLC	10/1/10				

UNLESS OTHERWISE SPECIFIED
DIMENSIONING AND TOLERANCES PER ANSI Y14.5M
ALL DIMENSIONS ARE IN INCHES AND [MILLIMETERS].
TOLERANCE INCHES: $\pm .005$ $\pm .010$ $\pm .030$
TOLERANCE MILLIMETERS: $\pm .15$ $\pm .30$
ANGLE PROJECTION: $\angle = 40^{\circ} 30'$
DO NOT SCALE DRAWING

TITLE:		CWS Coil Winding Specialist.	
WWW.COILS.COM		353 W Grove Ave Orange, CA 92665	
POWER INDUCTOR, HIGH TEMP		10.8 uH, 30 Amp	
SIZE	DATE	REV	
B	10/1/10	A	
SCALE	2=1	SHEET	1 OF 1