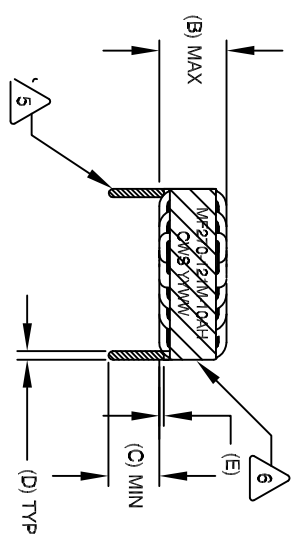


The information contained in this drawing is the sole property of CWS Coil Winding Specialist. Any reproduction in part or whole without written permission of CWS Coil Winding Specialist is prohibited.

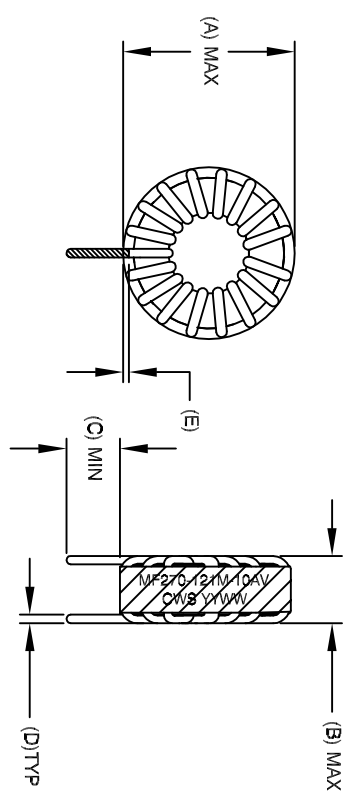
DIMENSIONAL TOLERANCE										
A (OD) MAX	B (HGT) MAX	C (LEAD) MIN	D (LEAD OD) TYP	E MIN/MAX	P1 REF	P2 REF				
1.500 [39.02]	.700 [17.78]	.500 [12.70]	.051 [1.30]	.040-.080 [1.00-1.90]	.800 [20.32]	1.200 [30.48]				

REVISION HISTORY				SIGN & DATE			
REV	ECN	DESCRIPTION		BR	DATE	CHK	DATE
A		INITIAL RELEASE		KLC	1/29/10	AK	1/29/10
B		CHANGE TO 10 AMP & PN		KLC	10/1/10	AK	10/1/10



FRONT VIEW

HORIZONTAL

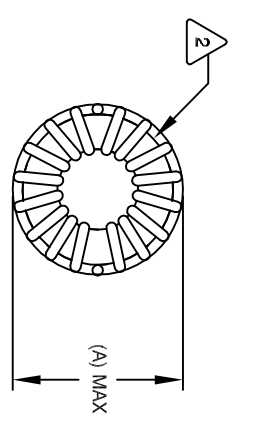


FRONT VIEW

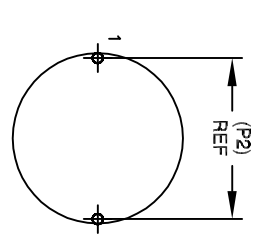
SIDE VIEW

VERTICAL

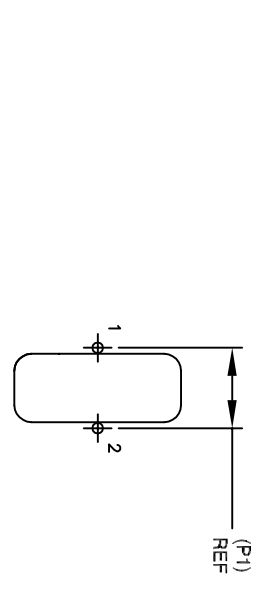
- 6 BUILD TO ROHS COMPLIANCE
- ** ADD SUFFIX "H" FOR HORIZONTAL & "V" FOR VERTICAL
- USING A PERMANENT MARKING METHOD MARK PART NUMBER AND REVISION, IF APPLICABLE WRAP INDUCTOR WITH 3M # 69 OR EQUAL
- TO THE CORE MUST REST FLAT ON PCB; LEADS MUST BE TANGENT FLUSH WITH THE COIL EDGE, AS SHOWN (I.E. COIL REMOVE INSULATION AND TIN LEADS 0.50 INCH
- WIND COILS EVENLY SPACED AROUND THE CORE CONSTRUCTION:



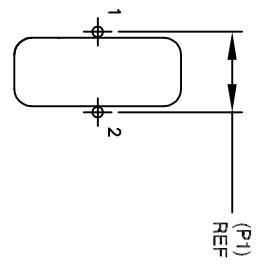
BOTTOM VIEW



MOUNTING HOLES PATTERN

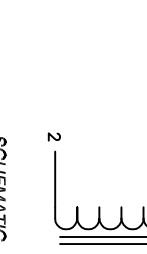


BOTTOM VIEW

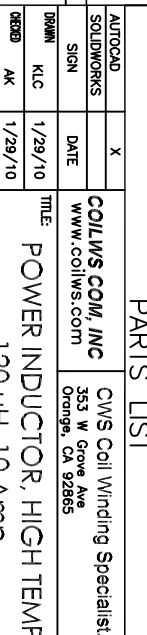
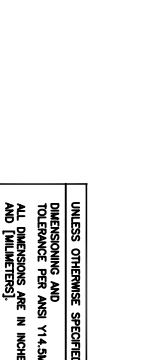


MOUNTING HOLES PATTERN

- 5 THESE SPECIFICATIONS ARE BASED ON LOW RIPPLE CURRENT WEIGHT: ~ 47 GRAM
- OPERATING TEMP: -55°C TO +180°C
- HI-POT TEST FOR WINDING TO CORE ISOLATION = 1250 VDC 5 SEC AT IDC OF 10 AMPS, LESS THAN 40 °C TEMP. RISE
- DOR = 23.0 MILLI-OHMS MAX.
- INDUCTANCE @ 10.0 AMP ~ 90 UH (LESS THAN 10% RIPPLE)
- INDUCTANCE @ 8.0 AMP ~ 98 UH (LESS THAN 10% RIPPLE)
- INDUCTANCE = 120 UH ± 15% @ LOW DC BIAS, 100 KHZ, 250mv
- SPECIFICATIONS:
- WIRE: UL RECOGNIZED 200°C RATED MAGNET WIRE
- CWS BYTEMARK OR OTHER APPROVED PART
- CORE: POWDERED TOROIDAL CORE



SCHEMATIC



NOTES: UNLESS OTHERWISE STATED, READ NOTES FROM BOTTOM UP

CODE IDENT		MFG. P/N		DESCRIPTION		ITEM NO.
AUTOCAD	X					
SOLIDWORKS						
SIGN						
DATE						
DATE	1/29/10					
ENGR.	AK					
DATE	1/29/10					
APPR.	KLC					
DATE	1/29/10					
SCALE	B					
SIZE	DN: M1					
SCALE	2=1					

PARTS LIST		DESCRIPTION		ITEM NO.
COWLS COM, INC		CWS Coil Winding Specialist.		
WWW.COWLS.COM		353 W Grove Ave		
		Orange, CA 92865		
TITLE:		POWER INDUCTOR, HIGH TEMP		
		120 UH, 10 Amp		
DRAWN		KLC		
DATE		1/29/10		
ENGR.		AK		
DATE		1/29/10		
APPR.		KLC		
DATE		1/29/10		
SCALE		B		
SIZE		DN: M1		
SCALE		2=1		