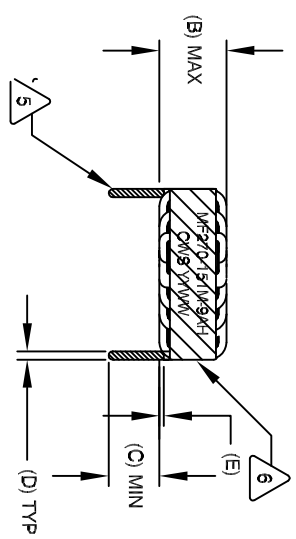


The information contained in this drawing is the sole property of CWS Coil Winding Specialist. Any reproduction in part or whole without written permission of CWS Coil Winding Specialist is prohibited.

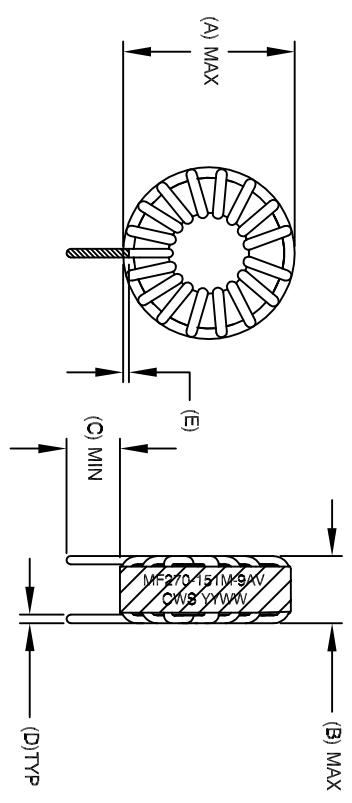
DIMENSIONAL TOLERANCE									
A (OD) MAX	B (HGT) MAX	C (LEAD) MIN	D (LEAD OD) TYP	E MIN/MAX	P1 REF	P2 REF			
1.350" [34.29]	.700" [17.78]	.500" [12.70]	.051" [1.30]	.040-.080" [1.00-1.90]	.800" [15.24]	1.200" [30.48]			

REVISION HISTORY				SIGN & DATE		
REV	ECN	DESCRIPTION	BR	DATE	CHK	DATE
A		INITIAL RELEASE	KJC	1/10/10	AK	1/10/10



FRONT VIEW

HORIZONTAL

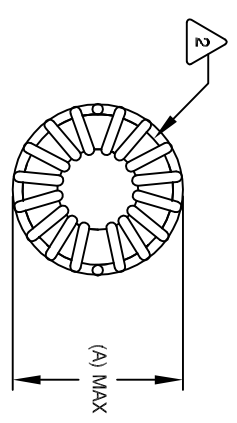


FRONT VIEW

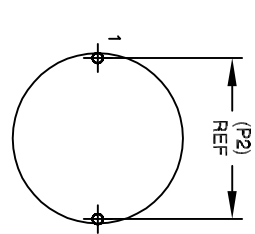
SIDE VIEW

VERTICAL

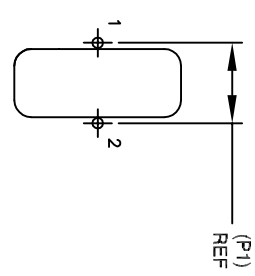
- 8 BUILD TO ROHS COMPLIANCE
- 7 ** ADD SUFFIX "H" FOR HORIZONTAL & "V" FOR VERTICAL
USING A PERMANENT MARKING METHOD
MARK PART NUMBER AND REVISION, IF APPLICABLE
WRAP INDUCTOR WITH 3M # 89 OR EQUAL
- 6 TO THE CORE
MUST REST FLAT ON PCB; LEADS MUST BE TANGENT
FLUSH WITH THE COIL EDGE, AS SHOWN (I.E. COIL
REMOVE INSULATION AND TIN LEADS 0.50 INCH
- 5 WIND COILS EVENLY SPACED AROUND THE CORE
CONSTRUCTION:
- 4 THESE SPECIFICATIONS ARE BASED ON LOW RIPPLE CURRENT
WEIGHT: ~ 50 GRAM
OPERATING TEMP: -55°C TO +180°C
HI-POT TEST FOR WINDING TO CORE ISOLATION = 1250 VDC 5 SEC
AT IDC OF 10 AMPS, LESS THAN 40 °C TEMP. RISE
DCR = 35.0 MILLI-OHMS MAX.
INDUCTANCE @ 9 AMP ~ 114 uH (LESS THAN 10% RIPPLE)
INDUCTANCE @ 7.5 AMP ~ 122 uH (LESS THAN 10% RIPPLE)
INDUCTANCE = 150 uH ± 15% @ LOW DC BIAS, 100 KHZ, 250mV
SPECIFICATIONS:



BOTTOM VIEW

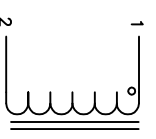


MOUNTING HOLES PATTERN



MOUNTING HOLES PATTERN

- 3 WIRE: UL RECOGNIZED 200°C RATED MAGNET WIRE
CWS BYTEMARK OR OTHER APPROVED PART
CORE: POWDERED TOROIDAL CORE
- 2 RATING CLASS H (180 °C) REQUIRED
MATERIAL: UL RECOGNIZED 94V-0 FOR FLAMMABILITY
- 1



SCHEMATIC

NOTES: UNLESS OTHERWISE STATED, READ NOTES FROM BOTTOM UP

CODE IDENT		MFG. P/N		DESCRIPTION		ITEM NO.
AUTOCAD	X					
SOLIDWORKS						
SIGN						
DATE						
DATE	10/1/10					
DRWN	KJC					
CHKD	AK					
ENGR	KJC					
APPR	KJC					
DATE	10/1/10					
DATE	10/1/10					
SCALE	B					
SCALE	2=1					

PARTS LIST		DESCRIPTION		ITEM NO.
CWS Coil Winding Specialist		353 W Grove Ave		
www.cwils.com		Orange, CA 92865		
TITLE:		POWER INDUCTOR, HIGH TEMP		
150 uH, 9 Amp				
SIZE	DRG. NO.			
B	MF270-1511M-9A			
REV				
A	**			