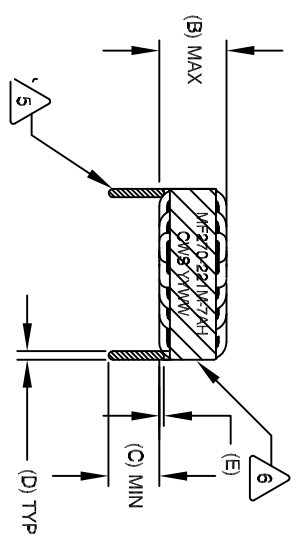


The information contained in this drawing is the sole property of CWS Coil Winding Specialist. Any reproduction in part or whole without written permission of CWS Coil Winding Specialist is prohibited.

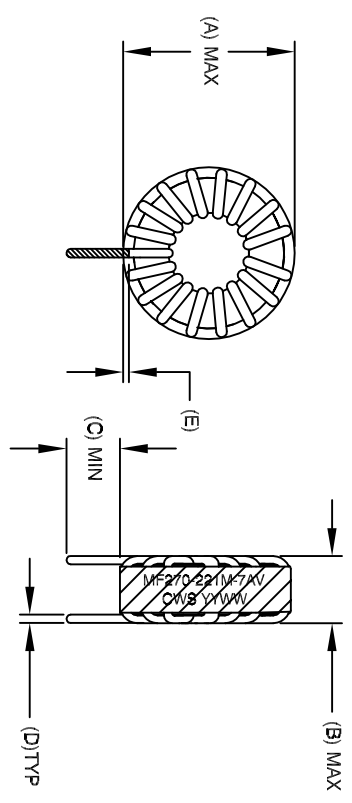
DIMENSIONAL TOLERANCE						
A (OD) MAX	B (HGT) MAX	C (LEAD) MIN	D (LEAD OD) TYP	E MIN/MAX	P1 REF	P2 REF
1.300 [33.02]	.680 [17.27]	.500* [12.70]	.045* [1.15]	.040-.080* [1.00-1.90]	.800* [20.32]	1.200* [30.48]

REVISION HISTORY			SIGN & DATE			
REV	ECN	DESCRIPTION	BY	DATE	CHK	DATE
A		INITIAL RELEASE	KLC	10/1/10	AK	10/1/10



FRONT VIEW

HORIZONTAL

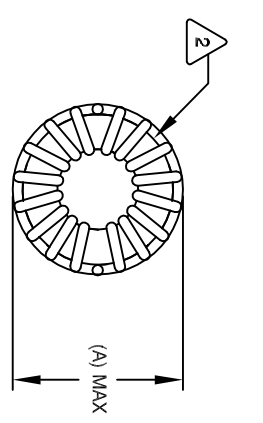


FRONT VIEW

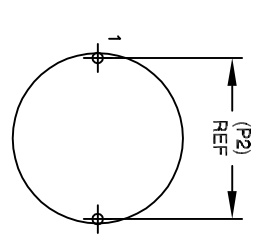
SIDE VIEW

VERTICAL

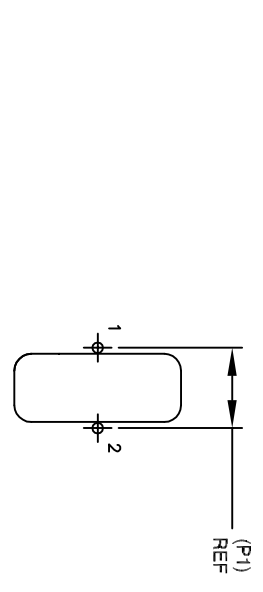
- 8 BUILD TO ROHS COMPLIANCE
- 7 ** ADD SUFFIX "H" FOR HORIZONTAL & "V" FOR VERTICAL
USING A PERMANENT MARKING METHOD
MARK PART NUMBER AND REVISION, IF APPLICABLE
WRAP INDUCTOR WITH 3M # 69 OR EQUAL
- 6 TO THE CORE
MUST REST FLAT ON PCB; LEADS MUST BE TANGENT
FLUSH WITH THE COIL EDGE, AS SHOWN (I.E. COIL
REMOVE INSULATION AND TIN LEADS 0.50 INCH
- 5 WIND COILS EVENLY SPACED AROUND THE CORE
CONSTRUCTION:
- 4 THESE SPECIFICATIONS ARE BASED ON LOW RIPPLE CURRENT
WEIGHT: ~ 50 GRAM
OPERATING TEMP: -55°C TO +180°C
HI-POT TEST FOR WINDING TO CORE ISOLATION = 1250 VDC 5 SEC
AT IDC OF 7 AMPS, LESS THAN 40 °C TEMP. RISE
DCR = 48.0 MILLI-OHMS MAX.



BOTTOM VIEW

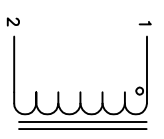


MOUNTING HOLES PATTERN



MOUNTING HOLES PATTERN

- 3 INDUCTANCE @ 7 AMP ~174 uH (LESS THAN 10% RIPPLE)
INDUCTANCE = 226 uH ±15% @ LOW DC BIAS, 100 KHZ, 250mv
SPECIFICATIONS:
WIRE: UL RECOGNIZED 200°C RATED MAGNET WIRE
CWS BYTEMARK OR OTHER APPROVED PART
CORE: POWDERED TOROIDAL CORE
- 2 RATING CLASS H (180 °C) REQUIRED
MATERIAL: UL RECOGNIZED 94V-0 FOR FLAMMABILITY



SCHEMATIC

NOTES: UNLESS OTHERWISE STATED, READ NOTES FROM BOTTOM UP

CODE IDENT	MFG. P/N	DESCRIPTION	ITEM NO.
AUTOCAD SIGN	X		
SOLIDWORKS SIGN			
DATE	10/1/10		
DRWNG	KLC	10/1/10	
GRDNG	AK	10/1/10	
ENGR.	KLC	10/1/10	
APPR.	KLC	10/1/10	
TITLE	POWER INDUCTOR, HIGH TEMP 220 uH, 7 Amp		
SIZE	DWG. NO.	MFG. P/N	REV
B		MF270-221M-7A **	A
SCALE	2=1		

UNLESS OTHERWISE SPECIFIED
DIMENSIONING AND TOLERANCES PER ANSI Y14.5M
ALL DIMENSIONS ARE IN INCHES AND [MILLIMETERS].
TOLERANCE INCHES: .XX±.005 .XX±.015 .XX±.030
TOLERANCE MILLIMETERS: .XX±.127 .XX±.254 .XX±.508
ANGLE PROJECTION
DO NOT SCALE DRAWING