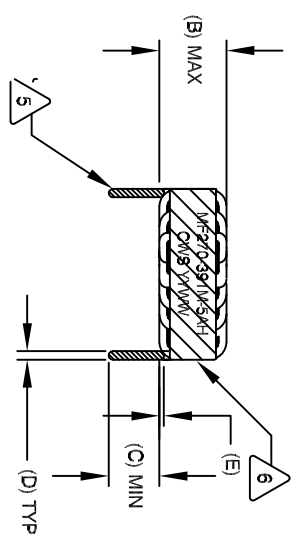


The information contained in this drawing is the sole property of CWS Coil Winding Specialist. Any reproduction in part or whole without written permission of CWS Coil Winding Specialist is prohibited.

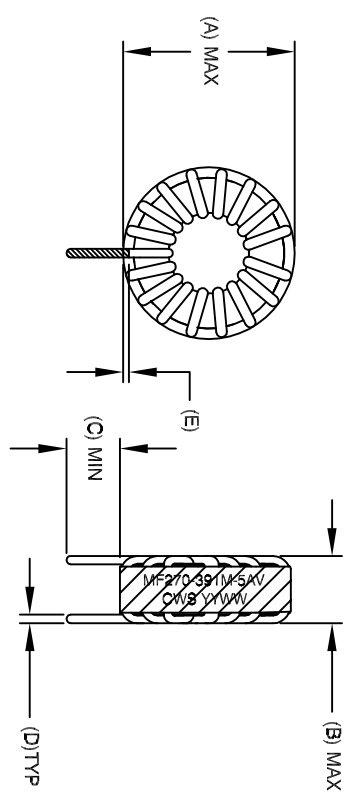
| DIMENSIONAL TOLERANCE | | | | | | |
|-----------------------|-----------------|-----------------|-----------------|--------------------------|-----------------|------------------|
| A (OD) MAX | B (HGT) MAX | C (LEAD) MIN | D (LEAD OD) TYP | E MIN/MAX | P1 REF | P2 REF |
| 1.300 [33.02] | .700 [17.78] | .500 [12.70] | .040 [1.02] | .040-.080 [1.00-1.90] | .800 [20.32] | 1.200 [30.48] |

| REVISION HISTORY | | | SIGN & DATE | | | |
|------------------|-----|-----------------|-------------|---------|-----|---------|
| REV | ECN | DESCRIPTION | BY | DATE | CHK | DATE |
| A | | INITIAL RELEASE | KJC | 10/1/10 | AK | 10/1/10 |



FRONT VIEW

HORIZONTAL

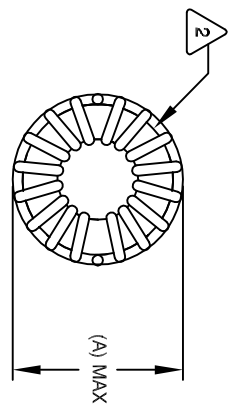


FRONT VIEW

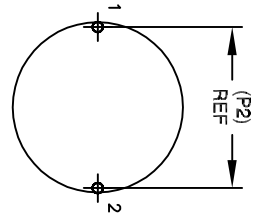
SIDE VIEW

VERTICAL

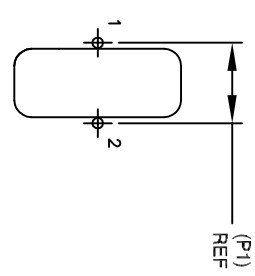
- 8 BUILD TO ROHS COMPLIANCE
- 7 ** ADD SUFFIX "H" FOR HORIZONTAL & "V" FOR VERTICAL
USING A PERMANENT MARKING METHOD
MARK PART NUMBER AND REVISION, IF APPLICABLE
WRAP INDUCTOR WITH 3M # 69 OR EQUAL
- 6 TO THE CORE
MUST REST FLAT ON PCB; LEADS MUST BE TANGENT
FLUSH WITH THE COIL EDGE, AS SHOWN (I.E. COIL
REMOVE INSULATION AND TIN LEADS 0.50 INCH
- 5 WIND COILS EVENLY SPACED AROUND THE CORE
CONSTRUCTION:
- 4 THESE SPECIFICATIONS ARE BASED ON LOW RIPPLE CURRENT
WEIGHT: ~ 50 GRAM
OPERATING TEMP: -55°C TO +180°C
HI-POT TEST FOR WINDING TO CORE ISOLATION = 1250 VDC 5 SEC
AT IDC OF 5 AMPS, LESS THAN 40 °C TEMP. RISE
DCR = 80.0 MILLI-OHMS MAX.



BOTTOM VIEW

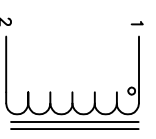


MOUNTING HOLES PATTERN



MOUNTING HOLES PATTERN

- 3 INDUCTANCE @ 5 AMP ~306 uH (LESS THAN 10% RIPPLE)
INDUCTANCE = 390 uH ±15% @ LOW DC BIAS, 100 KHZ, 250mv
SPECIFICATIONS:
WIRE: UL RECOGNIZED 200°C RATED MAGNET WIRE
CWS BYTEMARK OR OTHER APPROVED PART
CORE: POWDERED TOROIDAL CORE
- 2 RATING CLASS H (180 °C) REQUIRED
MATERIAL: UL RECOGNIZED 94V-0 FOR FLAMMABILITY



SCHEMATIC

NOTES: UNLESS OTHERWISE STATED, READ NOTES FROM BOTTOM UP

| CODE IDENT | MFG. P/N | DESCRIPTION | ITEM NO. |
|------------|----------|----------------------------------|--------------|
| AUTOCAD | X | | |
| SOLIDWORKS | | | |
| SIGN | DATE | PARTS LIST | |
| DRWML | 10/1/10 | COWLS COM, INC | |
| DRWDB | 10/1/10 | 353 W Grove Ave | |
| ENGR | 10/1/10 | Orange, CA 92865 | |
| APPR | 10/1/10 | CWS Coil Winding Specialist. | |
| | | WWW.COWLS.COM | |
| | | TITLE: POWER INDUCTOR, HIGH TEMP | |
| | | 390 uH, 5 Amp | |
| | | SIZE: Dwg. No. | REV |
| | | B | A |
| | | SCALE: 2=1 | SHEET 1 OF 1 |