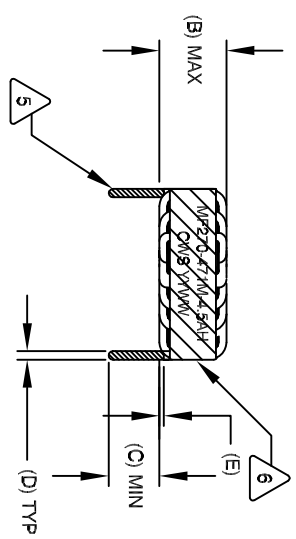


The information contained in this drawing is the sole property of CWS Coil Winding Specialist. Any reproduction in part or whole without written permission of CWS Coil Winding Specialist is prohibited.

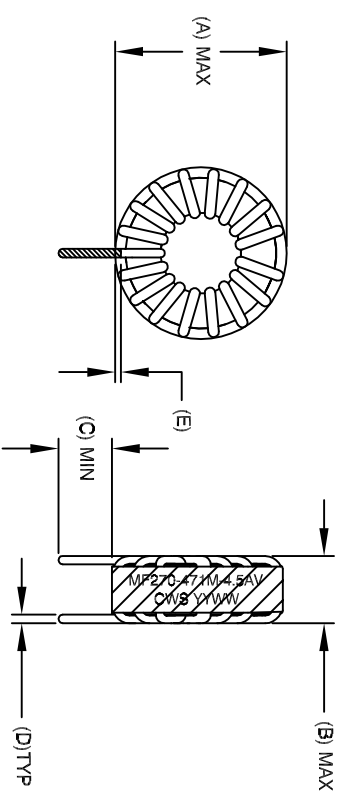
DIMENSIONAL TOLERANCE				
A (OD) MAX	B (HGT) MAX	C (LEAD) MIN	D (LEAD OP) TYP	E MIN/MAX
1.300 [33.02]	.700 [17.78]	.500 [12.70]	.035 [0.90]	.040-.090 [1.00-1.50]
				P1 REF 1.200 [30.48]
				P2 REF .600 [15.24]

REVISION HISTORY			SIGN & DATE		
REV	ECON	DESCRIPTION	BY	DATE	CHK
A		INITIAL RELEASE	KLC	10/1/10	AK

## HORIZONTAL



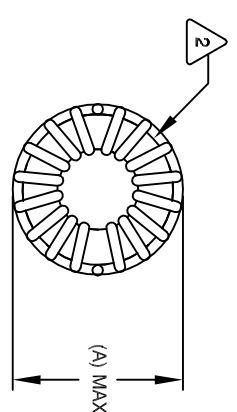
FRONT VIEW



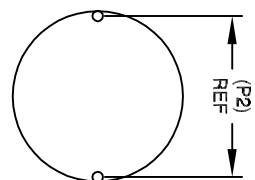
FRONT VIEW

## VERTICAL

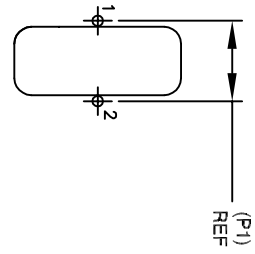
- 8 BUILD TO ROHS COMPLIANCE
- 7 \*\* ADD SUFFIX "H" FOR HORIZONTAL & "V" FOR VERTICAL  
USING A PERMANENT MARKING METHOD  
MARK PART NUMBER AND REVISION, IF APPLICABLE  
WRAP INDUCTOR WITH 3M # 69 OR EQUAL
- 6 TO THE CORE  
MUST REST FLAT ON PCB. LEADS MUST BE TANGENT  
FLUSH WITH THE COIL EDGE, AS SHOWN (I.E. COIL  
REMOVE INSULATION AND TIN LEADS 0.50 INCH
- 5 WIND COILS EVENLY SPACED AROUND THE CORE  
CONSTRUCTION:
- 4 THESE SPECIFICATIONS ARE BASED ON LOW RIPPLE CURRENT  
WEIGHT: ~ 48 GRAM  
OPERATING TEMP: -55°C TO +200°C  
HI-POT TEST FOR WINDING TO CORE ISOLATION = 1250 VDC 5 SEC  
AT IDC OF 5 AMPS, LESS THAN 40 °C TEMP. RISE  
DCR = 100.0 MILLI-OHMS MAX.
- 3 INDUCTANCE @ 4.5 AMP ~350 uH (LESS THAN 10% RIPPLE)  
INDUCTANCE = 470 uH ±15% @ LOW DC BIAS, 100 KHZ, 250mv  
SPECIFICATIONS:
- 2 WIRE: UL RECOGNIZED 200°C RATED MAGNET WIRE  
CWS BYTEMARK OR OTHER APPROVED PART  
CORE: POWDERED TOROIDAL CORE
- 1 RATING CLASS N (200 °C) REQUIRED  
MATERIAL: UL RECOGNIZED 94V-0 FOR FLAMMABILITY



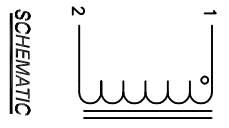
BOTTOM VIEW



MOUNTING HOLES PATTERN



MOUNTING HOLES PATTERN



SCHEMATIC

NOTES: UNLESS OTHERWISE STATED, READ NOTES FROM BOTTOM UP

CODE IDENT	MFG. P/N	DESCRIPTION	ITEM NO.
PARTS LIST			
AUTOCAD SOLIDWORKS SIGN	X		
DATE	DATE		
10/1/10	10/1/10		
AK	AK		
10/1/10	10/1/10		
KLC	KLC		
10/1/10	10/1/10		
APPR	APPR		
10/1/10	10/1/10		
TITLE:		CWS Coil Winding Specialist.	
DRAWN:		353 W Grove Ave	
ENGR:		Orange, CA 92865	
APPR:		WWW.COILS.COM	
SCALE:		TITLE: POWER INDUCTOR, HIGH TEMP	
2=1		470 uH, 4.5 Amp	
SHEET 1 OF 1		REV A	