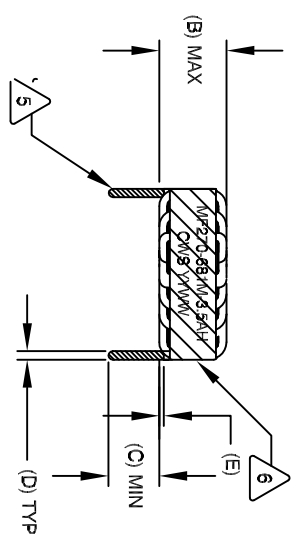


The information contained in this drawing is the sole property of CWS Coil Winding Specialist. Any reproduction in part or whole without written permission of CWS Coil Winding Specialist is prohibited.

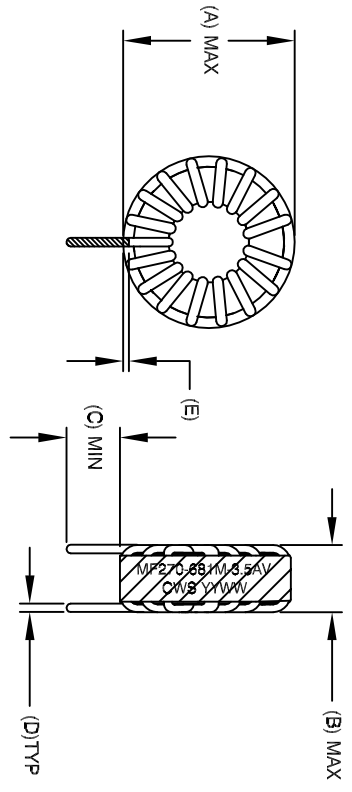
DIMENSIONAL TOLERANCE										
A (OD) MAX	B (HGT) MAX	C (LEAD) MIN	D (LEAD OD) TYP	E MIN/MAX	P1 REF	P2 REF				
1.300 [33.02]	.850 [21.51]	.500 [12.70]	.031 [0.80]	.040-.080 [1.00-1.90]	.800 [20.32]	1.200 [30.48]				

REVISION HISTORY				SIGN & DATE		
REV	ECN	DESCRIPTION	BR	DATE	CHK	DATE
A		INITIAL RELEASE	KLC	10/1/10	AK	10/1/10



FRONT VIEW

HORIZONTAL

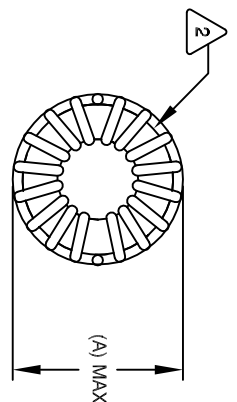


FRONT VIEW

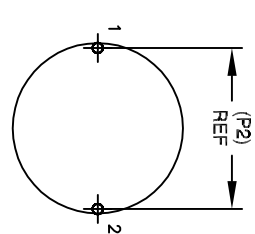
SIDE VIEW

VERTICAL

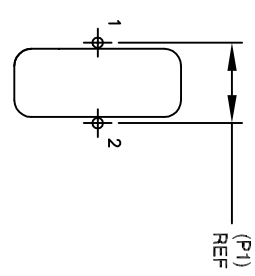
- 6 BUILD TO ROHS COMPLIANCE
- ** ADD SUFFIX "H" FOR HORIZONTAL & "V" FOR VERTICAL
- USING A PERMANENT MARKING METHOD MARK PART NUMBER AND REVISION, IF APPLICABLE WRAP INDUCTOR WITH 3M # 69 OR EQUAL
- TO THE CORE MUST REST FLAT ON PCB; LEADS MUST BE TANGENT FLUSH WITH THE COIL EDGE, AS SHOWN (I.E. COIL REMOVE INSULATION AND TIN LEADS 0.50 INCH
- WIND COILS EVENLY SPACED AROUND THE CORE CONSTRUCTION:
- THESE SPECIFICATIONS ARE BASED ON LOW RIPPLE CURRENT WEIGHT: ~ 48 GRAM
- OPERATING TEMP: -55°C TO +180°C
- HI-POT TEST FOR WINDING TO CORE ISOLATION = 1250 VDC 5 SEC AT IDC OF 3.5 AMPS, LESS THAN 40 °C TEMP. RISE
- DCR = 180.0 MILLI-OHMS MAX.



BOTTOM VIEW

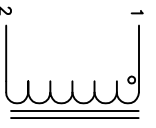


MOUNTING HOLES PATTERN



MOUNTING HOLES PATTERN

- 5 INDUCTANCE @ 3.5 AMP ~540 uH (LESS THAN 10% RIPPLE) INDUCTANCE = 680 uH ±15% @ LOW DC BIAS, 100 KHZ, 250mvV SPECIFICATIONS:
- WIRE: UL RECOGNIZED 200°C RATED MAGNET WIRE CWS BYTEMARK OR OTHER APPROVED PART
- CORE: POWDERED TOROIDAL CORE
- RATING CLASS H (180 °C) REQUIRED MATERIAL: UL RECOGNIZED 94V-0 FOR FLAMMABILITY



SCHEMATIC

NOTES: UNLESS OTHERWISE STATED, READ NOTES FROM BOTTOM UP

CODE IDENT	MFG. P/N	DESCRIPTION	ITEM NO.
PARTS LIST			
AUTOCAD SIGN	X	COWLS COM, INC	
SOLIDWORKS		353 W Grove Ave	
DATE		Orange, CA 92865	
DATE	10/1/10	TITLE: POWER INDUCTOR, HIGH TEMP	
DRW	KLC	680 UH, 3.5 Amp	
ENGR	AK		
APPR	KLC		
DATE	10/1/10	SIZE	DWG. NO.
DATE	10/1/10	B	MF270-681M-3.5A **
SCALE	2=1	REV	A