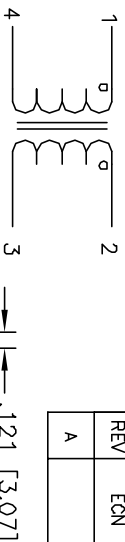


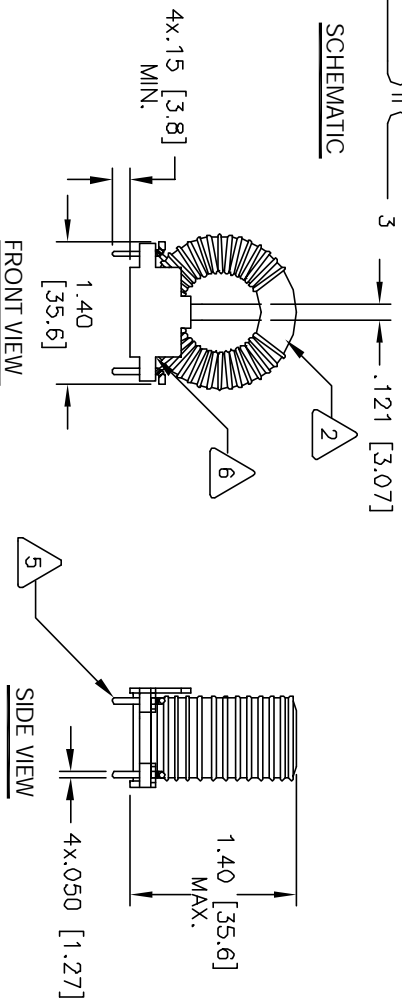
The information contained in this drawing is the sole property of CWS Coil Winding Specialists. Any reproduction in part or whole without written permission of CWS Coil Winding Specialists is prohibited.

REVISION HISTORY

REV	ECN	DESCRIPTION	SIGN & DATE		
A		PRODUCTION RELEASE	BY	DATE	DATE
			RLU	7/13/07	7/13/07



SCHEMATIC



FRONT VIEW

SIDE VIEW

BOTTOM VIEW

MOUNTING HOLES PATTERN

- 7 BUILT TO ROHS COMPLIANCE AND LEAD FREE  
WHERE SHOWN, USING A PERMANENT MARKING METHOD  
MARK PART NUMBER AND REVISION
- 6 APPLY EPOXY 2 PARTS
- 5 REMOVE INSULATION AND SOLDER TO BOBBIN LEADS

- 4 CONSTRUCTION:  
MAX. LEAKAGE INDUCTANCE = 60.0uH  
TYPICAL SRF = 400KHZ  
HI-POT TEST FOR INTERWINDING ISOLATION = 1250VDC  
MAX. TEMP RISE AT RATED CURRENT = 26°C  
RATED CURRENT = 4 AMPS DC MAX  
DCR TOTAL = 70.0 MILLI-OHMS MAX.  
L=3.7 MH MIN. + 25% (100KHZ, <1Vrms)

- 3 SPECIFICATIONS @ 25°C

WIRE: UL RECOGNIZED 155°C OR 200°C RATED MAGNET WIRE  
CWS BYTEMARK OR OTHER APPROVED PART  
CORE: COATED FERRITE TOROID, HIGH PERM MNZN

- 2 RATING CLASS B (130°C) REQUIRED  
1. MATERIAL: UL RECOGNIZED 94V-0 FLAMMABILITY FOR BOBBIN

NOTES: UNLESS OTHERWISE SPECIFIED. READ FROM BOTTOM UP.

CODE IDENT	MFG. P/N	DESCRIPTION	ITEM NO.
AUTOCAD SIGN	X		
SOLIDWORKS SIGN	DATE		
DRAWN RLU	7/13/07	TITLE	
DESIGN JLAU	7/13/07	<b>COILS COM, INC</b>	
ENGR. KSUM	7/13/07	www.coilw.com	
APPR. JLAU	7/13/07	CWS Coil Winding Specialist.	
		353 W GROVE AVENUE	
		ORANGE, CA. 92665	
		SIZE: <b>B</b>	
		PM-H-372U-4A	REV A
		SCALE: 1=1	