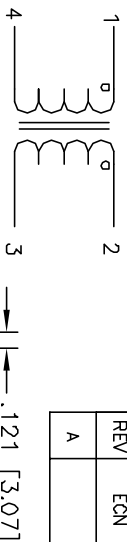


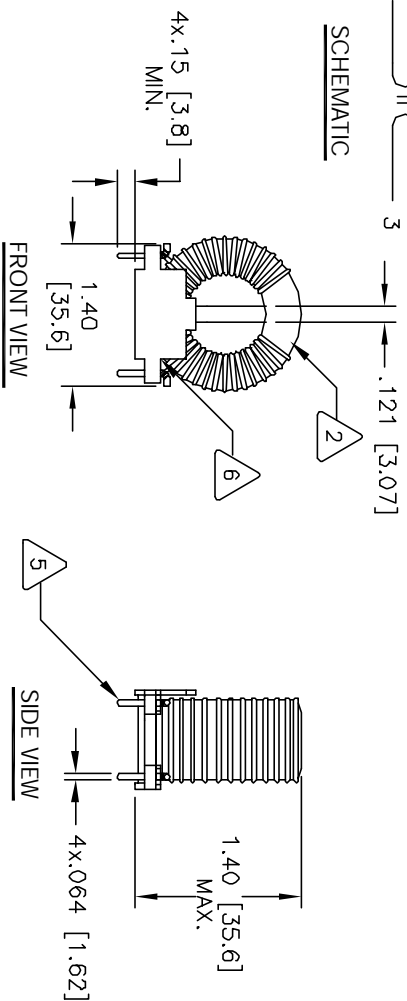
The information contained in this drawing is the sole property of CWS Coil Winding Specialists. Any reproduction in part or whole without written permission of CWS Coil Winding Specialists is prohibited.

REVISION HISTORY

REV	ECN	DESCRIPTION	BR	DATE	CHK	DATE
A		PRODUCTION RELEASE	RLU	7/09/07	JLJU	7/09/07

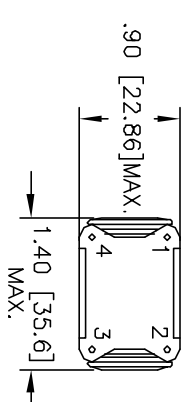


SCHEMATIC

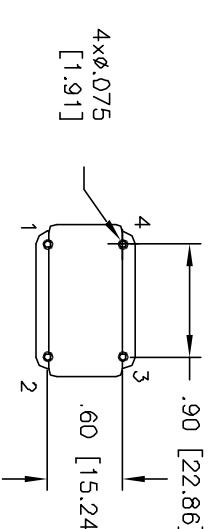


FRONT VIEW

SIDE VIEW



BOTTOM VIEW



MOUNTING HOLES PATTERN

- 7 BUILT TO ROHS COMPLIANCE AND LEAD FREE  
WHERE SHOWN, USING A PERMANENT MARKING METHOD  
MARK PART NUMBER AND REVISION
- 6 APPLY EPOXY 2 PARTS
- 5 REMOVE INSULATION AND USE AS BOBBIN LEADS
- 4 WIND BOTH COILS EVENLY SPACED  
CONSTRUCTION:  
MAX. LEAKAGE INDUCTANCE = 6.32uH  
TYPICAL SRF = 1.15 MHZ  
HI-POT TEST FOR INTERWINDING ISOLATION = 1250VDC  
MAX. TEMP RISE AT RATED CURRENT = 26°C  
RATED CURRENT = 13 AMPS DC MAX  
DCR TOTAL = 10 MILLI-OHMS MAX.  
L = 580.0 uH MIN. + 25% (100KHZ, <1Vrms)  
3 SPECIFICATIONS @ 25°C  
WIRE: UL RECOGNIZED 155°C OR 200°C RATED MAGNET WIRE  
CWS BYTEMARK OR OTHER APPROVED PART  
CORE: COATED FERRITE TOROID, HIGH PERM MNZN
- 2 RATING CLASS B (130°C) REQUIRED  
MATERIAL: UL RECOGNIZED 94V-0 FLAMMABILITY FOR BOBBIN

NOTES: UNLESS OTHERWISE SPECIFIED. READ FROM BOTTOM UP.

CODE IDENT	MFG. P/N	DESCRIPTION	ITEM NO.
AUTOCAD SIGN	X	PARTS LIST	
SOLIDWORKS SIGN			
DATE	DATE		
7/09/07	7/09/07		
DRWN RLU	ENGR. KSUM	TITLE: Common Mode Line Chokes	REV A
7/09/07	7/09/07	High Inductance Series	
APPR. JLJU	7/09/07	SIZE: DIM. IN. B	REV A
		PM-H-581U-13A	
		SCALE: 1=1	