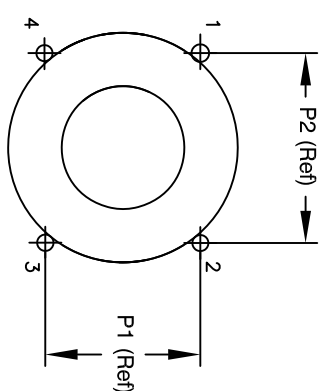
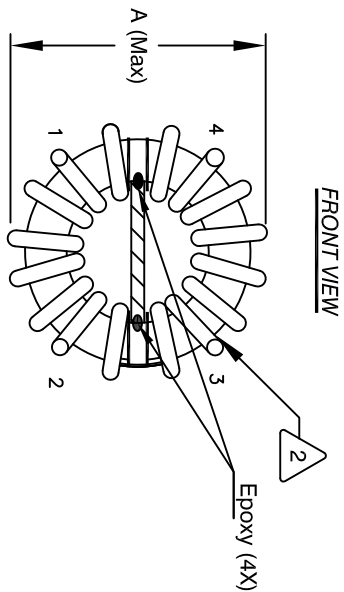
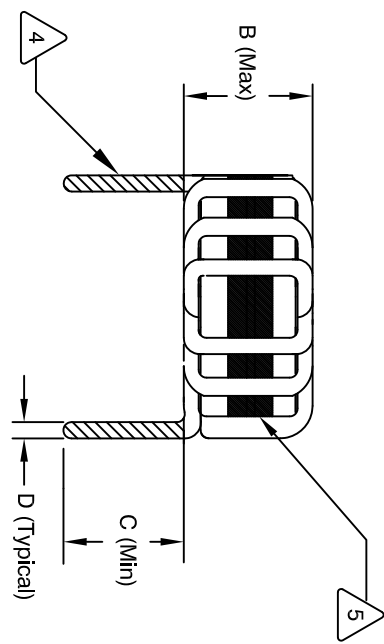
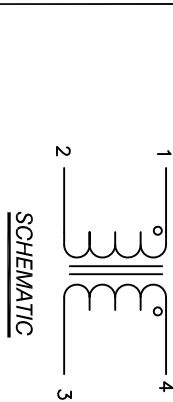


The information contained in this drawing is the sole property of Coil Winding Specialist Inc. (CWS)  
 Any reproduction in part or whole without written permission of CWS is prohibited.

DIMENSIONAL TOLERANCE INCHES [MM]					
A(OD) Max	B(HGHT) Max	C(LEAD) Min	D(LEAD DIM) TYP	P1 Ref	P2 Ref
1.50 [38.00]	0.95 [24.00]	0.5 [12.7]	(4) 0.07x0.14 [1.8x3.6]	0.45 [11.50]	1.10 [27.94]

REVISION HISTORY					
REV	ECN	DESCRIPTION	BY	DATE	DATE
D1		REVERSE DESCRIPTION	JL	07/07/17	07/07/17
E	N/A	ELEC. AND MECH. UPDATED	TN	03/05/18	03/05/18



- 7 BUILT TO ROHS COMPLIANCE
- 6 LABEL PART NUMBER AND REVISION IF APPLICABLE
- 5 WRAP CORE WITH KAPTON TAPE
- 4 TIN LEADS APPROX. 0.5 INCH AND FLUSH WITH THE COIL EDGE.

WEIGHT = 42 GRAMS  
 OPERATING TEMP RANGE = -25 °C TO 120°C  
 MAX TEMP RISE = 40 °C  
 INTERWINDING ISOLATION = 2000 VOLTS RMS, 3 mA, 2 sec.  
 DCR ON EACH WINDING = 1.0 mΩ MAX  
 SRF = 4.6 MHz TYP  
 MAX VOLTAGE ACROSS TERMINALS 1-2 OR 3-4 = 250 VAC OR VDC  
 RATED CURRENT = 40 AMPS  
 LEAKAGE INDUCTANCE = 0.9μH TYP @ 10 KHZ, 1 Vrms  
 INTERWINDING CAPACITANCE = 21pF TYP @ SRF  
 $|Z| = 0.41$  KIL-OHMS TYP. @ SRF  
 $L_s = 0.75$ mH TYP. @ 1KHZ, 1Vrms, 0 Amps  
 $L_s = 0.12$ mH TYP. @ 100KHZ, 1Vrms, 0 Amps  
 INDUCTANCE:  
 INSULATION RESISTANCE = 100 MEGA-OHMS MIN. @ 500 VDC  
 SPECIFICATIONS AT 25°C:

- 2 WIRE: UL CLASS 200°C  
 CWS BYTEMARK OR OTHER APPROVED PART  
 CORE: NANOCRYSTALLINE OR AMORPHOUS CORE
- 1 BOBBIN/CASE = UL CLASS B (130°)  
 MATERIAL: UL RECOGNIZED 94V-0 FOR FLAMMABILITY

NOTES: UNLESS OTHERWISE SPECIFIED, READ NOTES FROM BOTTOM TO TOP.

QTY	CODE IDENT	MFG. P/N	DESCRIPTION	ITEM NO.
			<b>PARTS LIST</b>	
	AUTOCAD			
	SOLIDWORKS			
	SIGN			
	DATE			
	DRWN	12/16/10		
	ENGR	12/16/10		
	APPR	03/30/11		
	SCALE			
	SIZE			
	DWG. NO.			
	HN-H-901U-40A			
	REV			
	E			

UNLESS OTHERWISE SPECIFIED  
 DIMENSIONING AND TOLERANCE PER ANSI Y14.5M AND [DIMETERS]  
 TOLERANCE INCHES:  
 .XXX±.005 .XX±.015 ⌀±.030  
 .XX±.127 .X±.58 ⌀±.030  
 ANGLE PROJECTION DO NOT SCALE DRAWING