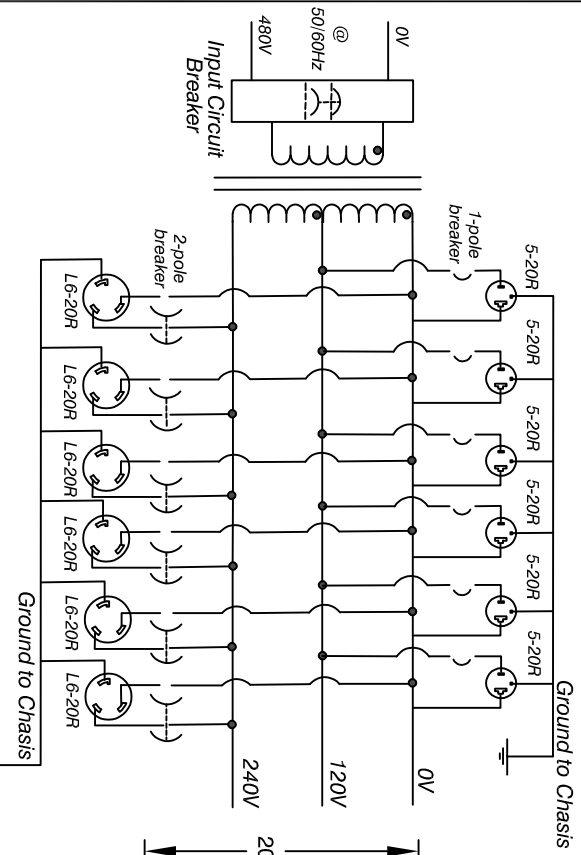


The information contained in this drawing is the sole property of the Coil Winding Specialist, Inc. Any reproduction in part or whole without written permission of Coil Winding Specialist, Inc. is prohibited.

INPUT OUTPUT



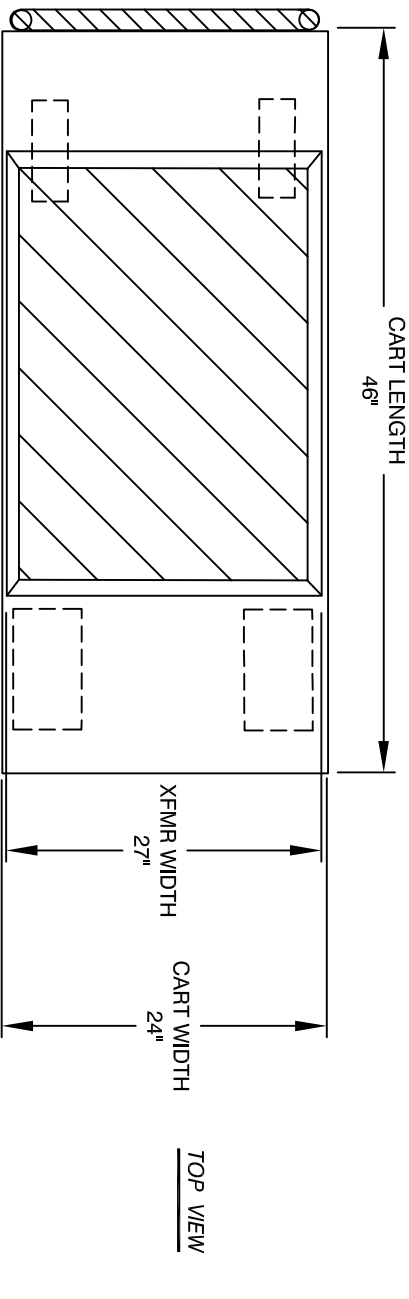
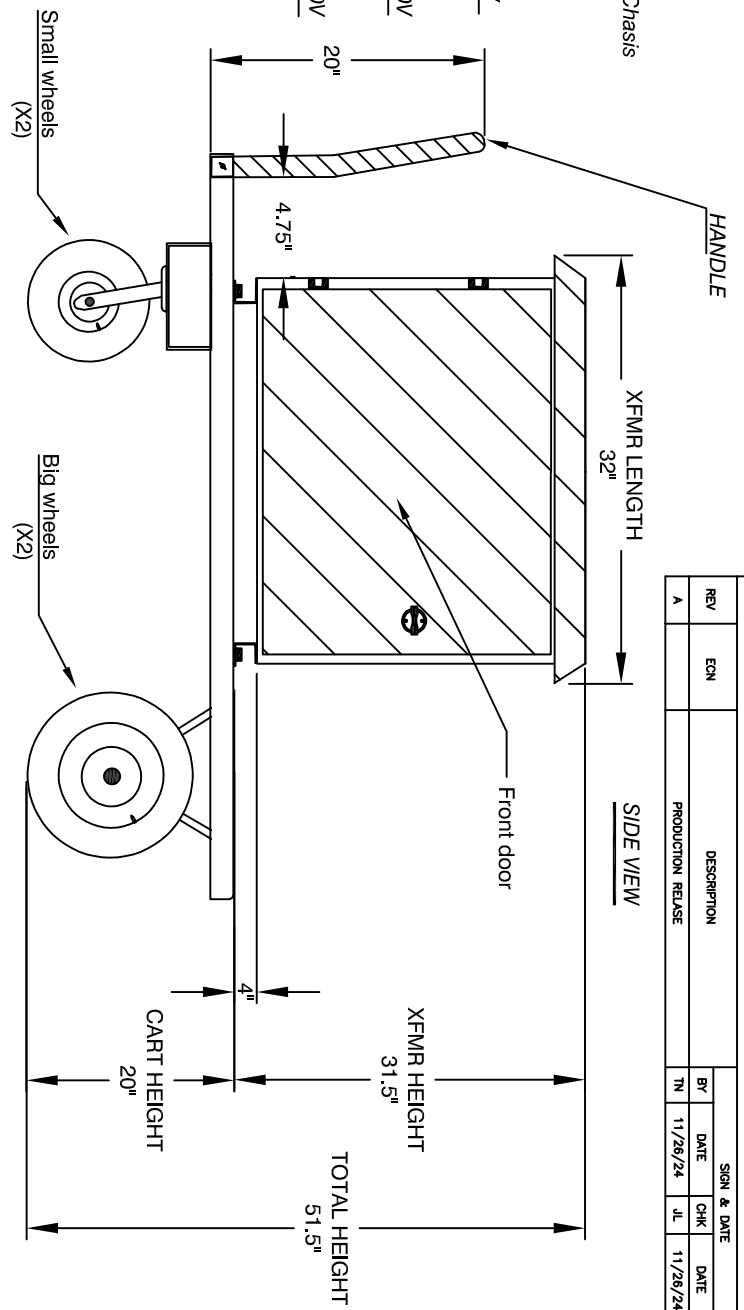
SCHEMATIC

TRANSFORMER WEIGHT: 290 KG TYPICAL
 OUTPUT CURRENT: 20 AMPS (EACH RECEPTACLE).
 OUTPUT VOLTAGE: 120V/240VAC
 INPUT CURRENT: 104.2 AMPS
 INPUT VOLTAGE: 480VAC
 TYPE: DRY TRANSFORMER, VARNISHED
 FREQUENCY: 50/60Hz
 PHASE: 1
 CAPACITY: 50KVA
 SPECIFICATIONS @ 25°C:

- 1 TEMPERATURE CLASS: H
 MATERIAL: UL RECOGNIZED 94V-0 FOR FLAMMABILITY
- 2

UNIT OF MEASUREMENT IS IN INCHES UNLESS OTHERWISE SPECIFIED.

NOTES: UNLESS OTHERWISE SPECIFIED, READ FROM BOTTOM UP.
 CAGE CODE: 5DME2



REVISION HISTORY		SIGN & DATE	
REV	ECN	DESCRIPTION	DATE
A		PRODUCTION RELEASE	11/26/24
			11/26/24

UNLESS OTHERWISE SPECIFIED		AUTOCAD		X	
DIMENSIONING AND TOLERANCE PER ANSI Y14.5M		SOLIDWORKS			
ALL DIMENSIONS ARE IN INCHES AND (MILLIMETERS):		DRAWN		TN	
TOLERANCE INCHES: $\pm .030$		CHECKED		JM	
TOLERANCE METRICS: $\pm .002$		ENGR		JL	
ANGLE PROJECTION		APPR		JL	
DO NOT SCALE DRAWING		DATE		11/26/24	
		TITLE:		Portable 50/60Hz, 1 Phase Transformer	
		www.coilws.com		480V Input, 120V/240V Output	
		sales@coilws.com		SIZE (DWG. NO.)	
		Coil Winding Specialist, Inc.		B	
		353 W GROVE AVE		SCALE	
		ORANGE, CA 92865		NOT TO SCALE	
				SHEET 1 OF 1	
				REV A	