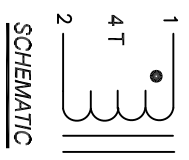
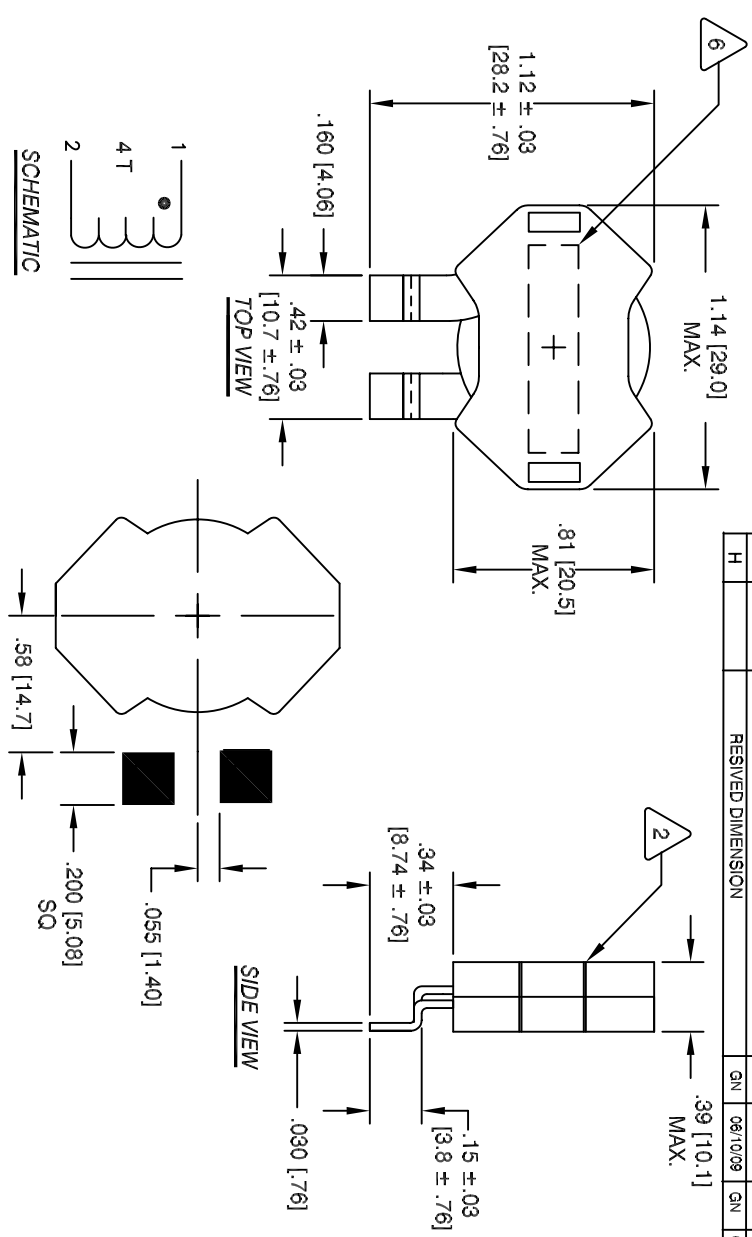


The information contained in this drawing is the sole property of CWS Coil Winding Specialist. Any reproduction in part or whole without written permission of CWS Coil Winding Specialist is prohibited.

REVISION HISTORY

REV	ECN	DESCRIPTION	BY	DATE	CHK	DATE
F		PRODUCTION RELEASE	BAN	12/4/06	JLJU	12/4/06
G		RESIVED DIMENSION	CT	12/25/08		
H		RESIVED DIMENSION	GN	06/10/09	GN	06/10/09



- 7 BUILT TO ROHS COMPLIANCE AND LEAD FREE
- WHERE SHOWN, USING A PERMANENT MARKING METHOD
- 6 MARK PART NUMBER AND REVISION
- 5 COPLANARITY: CORE SURFACE TO LEADS WITHIN .005 INCHES
- 300V RMS, WINDING TO CORE
- DIELECTRIC STRENGTH (2 SECONDS, 5 mA MAX.)
- 4 HELIX WINDING INSULATION:
  - TIME OVER  $180^{\circ}C = <1$  MINUTE
  - PEAK TEMP :  $240^{\circ}C$
  - SMT REFLOW CONDITIONS: RAMP RATE  $1^{\circ}C/SEC$  MAX.
  - DCR = 1.55 MILLI-OHM MAX. @  $25^{\circ}C$
  - CURRENT RATING: 3.25 uH @ 0 ADC and 2.7 uH @ 10 ADC
  - L = 3.6 uH  $\pm 15\%$ , 100 KHZ, 0.25 Vrms; 0 ADC
- 3 SPECIFICATIONS @  $25^{\circ}C$ 
  - WIRE:  $200^{\circ}C$  MIN. RATING HELICAL WOUND MAGNET WIRE
  - CWS BYTE-MARK OR OTHER APPROVED PART
  - CORE: GAPPED RM10 FERRITE
- 2 RATING OF  $200^{\circ}C$  REQUIRED
- 1 MATERIAL: UL RECOGNIZED 94V-0 FOR FLAMMABILITY

NOTES: UNLESS OTHERWISE SPECIFIED, PLANAR INDUCTOR.  
READ FROM BOTTOM UP.

QTY	CODE IDENT	MFQ. P/N	DESCRIPTION	ITEM NO.
			<b>PARTS LIST</b>	
			<b>AUTOCAD SOLIDWORKS SIGN DATE</b>	
			<b>DRWNN TDK 4/24/06</b>	
			<b>CHKD JLJU 4/24/06</b>	
			<b>ENGR. KSUM 4/24/06</b>	
			<b>APPR. JLJU 4/24/06</b>	
			<b>TITLE:</b> High Current Output Choke	
			60 Amps Max	
			<b>SIZE Dwg. No.</b> CWS-39677	<b>REV H</b>
			<b>SCALE</b> NOT TO SCALE	<b>SHEET 1 OF 1</b>

UNLESS OTHERWISE SPECIFIED  
DIMENSIONING AND TOLERANCES PER ANSI Y14.5M  
ALL DIMENSIONS ARE IN INCHES AND [MILLIMETERS].  
TOLERANCE INCHES:  $\phi = +0.30'$   
 $.XXX = \pm .005$   $.XX = \pm .015$   
TOLERANCE METRICES:  $\phi = +0.30'$   
 $.XXX = \pm .127$   $.XX = \pm .38$   
ANGLE PROJECTION DO NOT SCALE DRAWING